

# Anti-CaMKII alpha Recombinant Rabbit Monoclonal Antibody



**Catalog #: 7154**

## Aliases

CAMK2A; Calcium/Calmodulin Dependent Protein Kinase II Alpha; KIAA0968; CAMKA; Calcium/Calmodulin-Dependent Protein Kinase (CaM Kinase) II Alpha; Calcium/Calmodulin-Dependent Protein Kinase Type II Subunit Alpha; Calcium/Calmodulin-Dependent Protein Kinase Type II Alpha Chain; Calcium/Calmodulin-Dependent Protein Kinase II Alpha-B Subunit; CaM Kinase II Alpha Subunit; CaM Kinase II Subunit; Alpha; CaM-Kinase II Alpha Chain; CaMK-II Alpha Subunit; CaMK-II Subunit Alpha; CaMKIINalpha; EC 2.7.11.17; CAMKIINALPHA; CaMKIIalpha; EC 2.7.11; CaMKII $\alpha$ ; CAMKIIA; MRD53; MRT63

## Background

Gene Name: CAMK2A

NCBI Gene Entry: [815](#)

UniProt Entry: [Q9UQM7](#)

## Application Information

Molecular Weight: Predicted, 54 kDa; observed, 42 kDa

Clonality: Rabbit monoclonal antibody

Clone ID: 23GB1880

Species Reactivity: Human, mouse, rat

Applications Tested: Western blotting (WB), flow cytometry (FCM), immunocytochemistry (IC)

## Immunogen

A synthesized peptide derived from human CaMKII alpha

## Isotype

Rabbit IgG

## Storage Buffer

Supplied in PBS (pH 7.4) containing 50% glycerol, and 0.02% sodium azide.

## Storage

Store at -20 °C for one year.

## Recommended Dilutions

Western Blotting (WB): 1:1,000-1:5,000

Flow Cytometry (FCM): 1:2,000

---

### SUPPORT

SUPPORT@GENUINBIOTECH.COM  
TEL: +1-540-855-7041

### ORDERS

SALES@GENUINBIOTECH.COM  
FAX: +1-540-855-7041

[WWW.GENUINBIOTECH.COM](http://WWW.GENUINBIOTECH.COM)

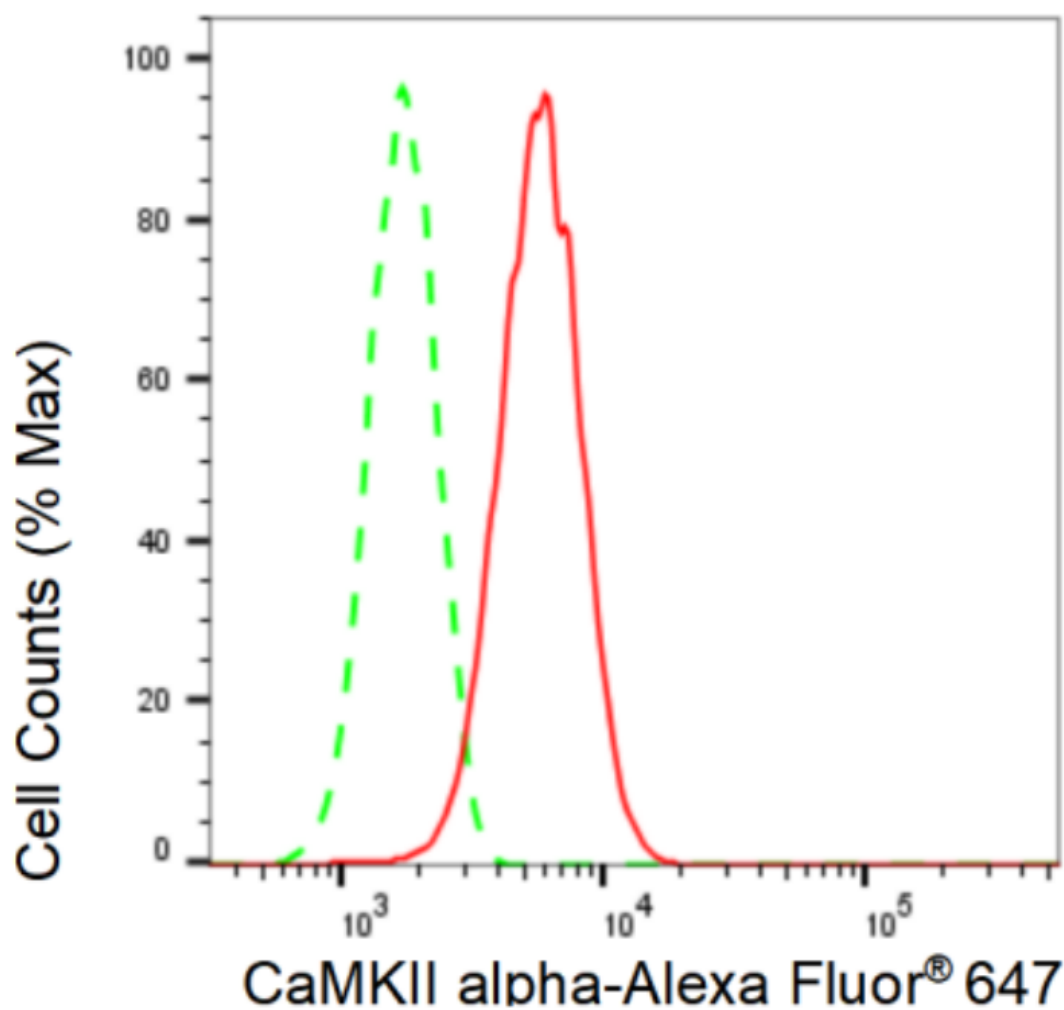
# Anti-CaMKII alpha Recombinant Rabbit Monoclonal Antibody

PAGE 2

Immunocytochemistry (IC): 1:100-1:1,000

**Note:** This product is for research use only.

## Validation Data



Copyright ©2024 Genuin Biotechnologies LLC

Flow cytometric analysis of CaMKII alpha expression in HT-1080 cells using CaMKII alpha antibody (Cat#7154, 1:2,000). Green, isotype control; red, CaMKII alpha.

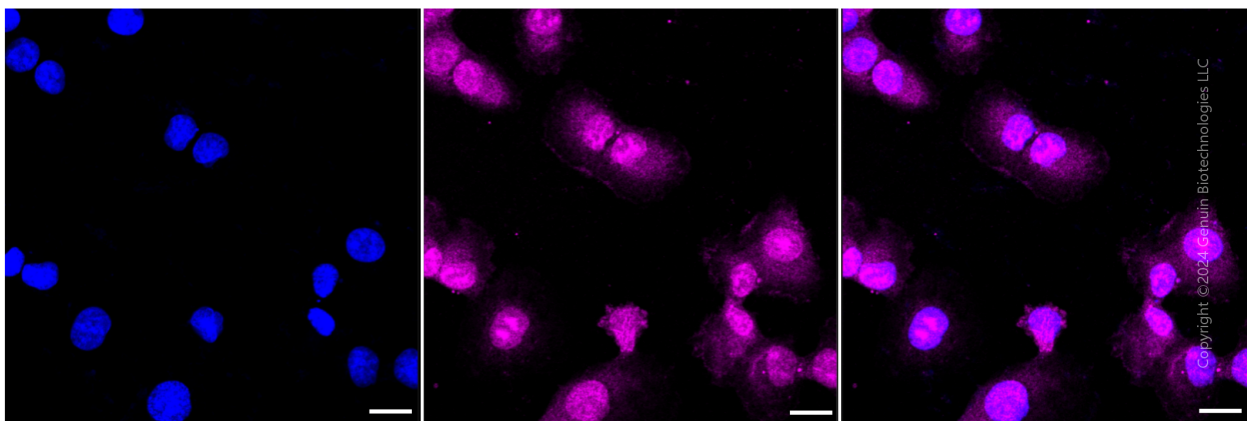
### SUPPORT

SUPPORT@GENUINBIOTECH.COM  
TEL: +1-540-855-7041

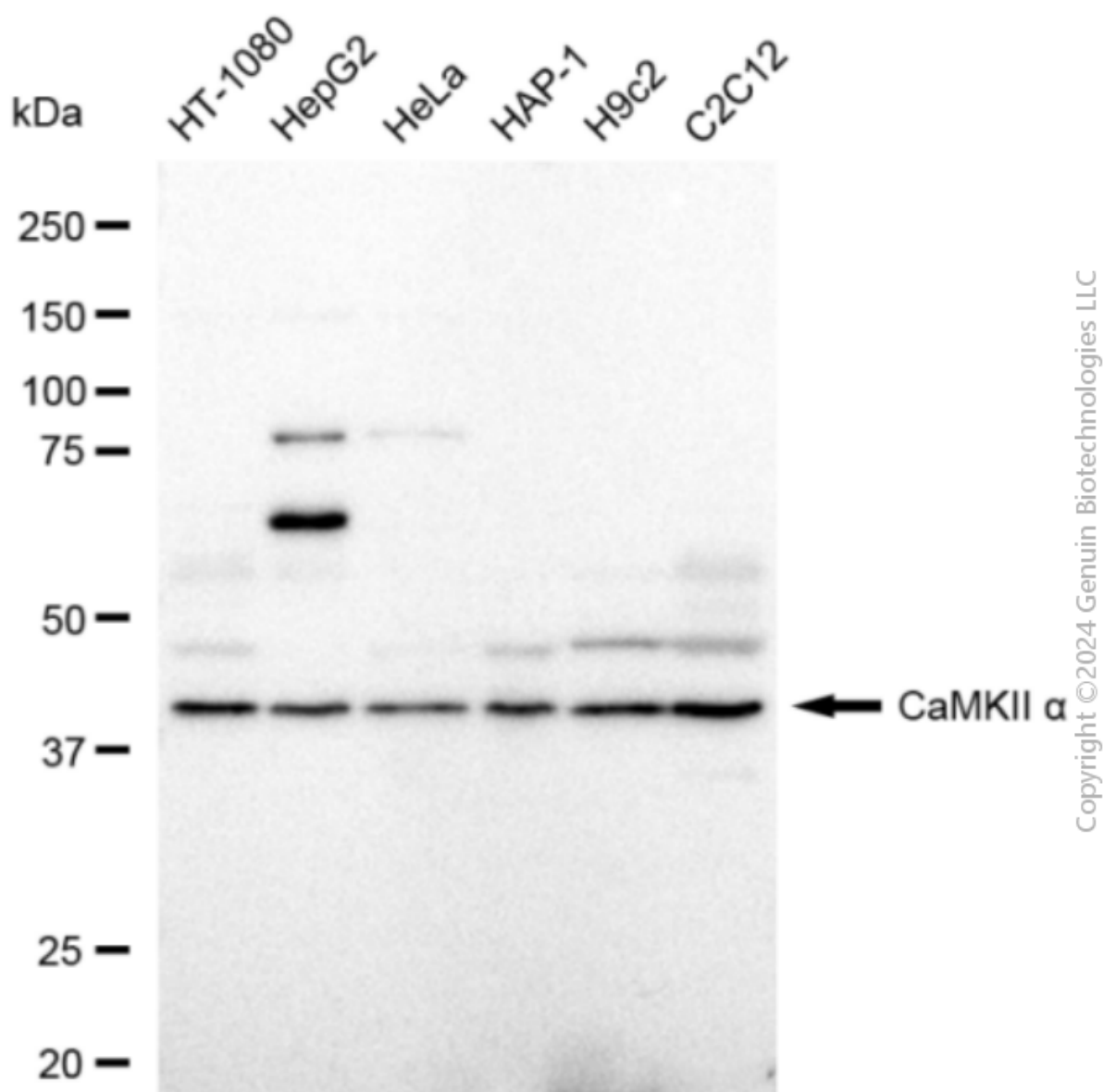
### ORDERS

SALES@GENUINBIOTECH.COM  
FAX: +1-540-855-7041

[WWW.GENUINBIOTECH.COM](http://WWW.GENUINBIOTECH.COM)



Immunocytochemical staining of HT-1080 cells with CaMKII alpha antibody (Cat#7154, 1:1,000). Nuclei were stained blue with DAPI; CaMKII alpha was stained magenta with Alexa Fluor® 647. Images were taken using Leica stellaris 5. Protein abundance based on laser Intensity and smart gain: Medium. Scale bar: 20  $\mu$ m.



Western blotting analysis using anti-CaMKII alpha antibody (Cat#7154). Total cell lysates (30 µg) from various cell lines were loaded and separated by SDS-PAGE. The blot was incubated with anti-CaMKII alpha antibody (Cat#7154, 1:5,000) and HRP-conjugated goat anti-rabbit secondary antibody (Cat#201, 1:20,000) respectively. Image was developed using FeQ™ ECL Substrate Kit (Cat#226).