

Anti-Collagen type III alpha 1 chain Recombinant Rabbit Monoclonal Antibody



Catalog #: 7543

Aliases

Collagen Type III Alpha 1 Chain; Ehlers-Danlos Syndrome Type IV, Autosomal Dominant; Collagen, Type III, Alpha; Collagen Alpha-1(III) Chain; EDS4A; Alpha-1 Type III Collagen; Alpha1 (III) Collagen; Collagen, Fetal; EDSVASC; PMGEDSV

Background

Gene Name: COL3A1

NCBI Gene Entry: [1281](#)

UniProt Entry: [P02461](#)

Application Information

Molecular Weight: Predicted, 139 kDa; observed, 150 kDa

Clonality: Rabbit monoclonal antibody

Clone ID: 23GB1260

Species Reactivity: Human, mouse, rat

Applications Tested: Western blotting (WB), flow cytometry (FCM), immunocytochemistry (IC)

Immunogen

A synthesized peptide derived from Collagen III

Isotype

Rabbit IgG

Storage Buffer

Supplied in PBS (pH 7.4) containing 50% glycerol, and 0.02% sodium azide.

Storage

Store at -20 °C for one year.

Recommended Dilutions

Western Blotting (WB): 1:1,000-1:5,000

Flow Cytometry (FCM): 1:2,000

Immunocytochemistry (IC): 1:100-1:1,000

Note: This product is for research use only.

SUPPORT

SUPPORT@GENUINBIOTECH.COM
TEL: +1-540-855-7041

ORDERS

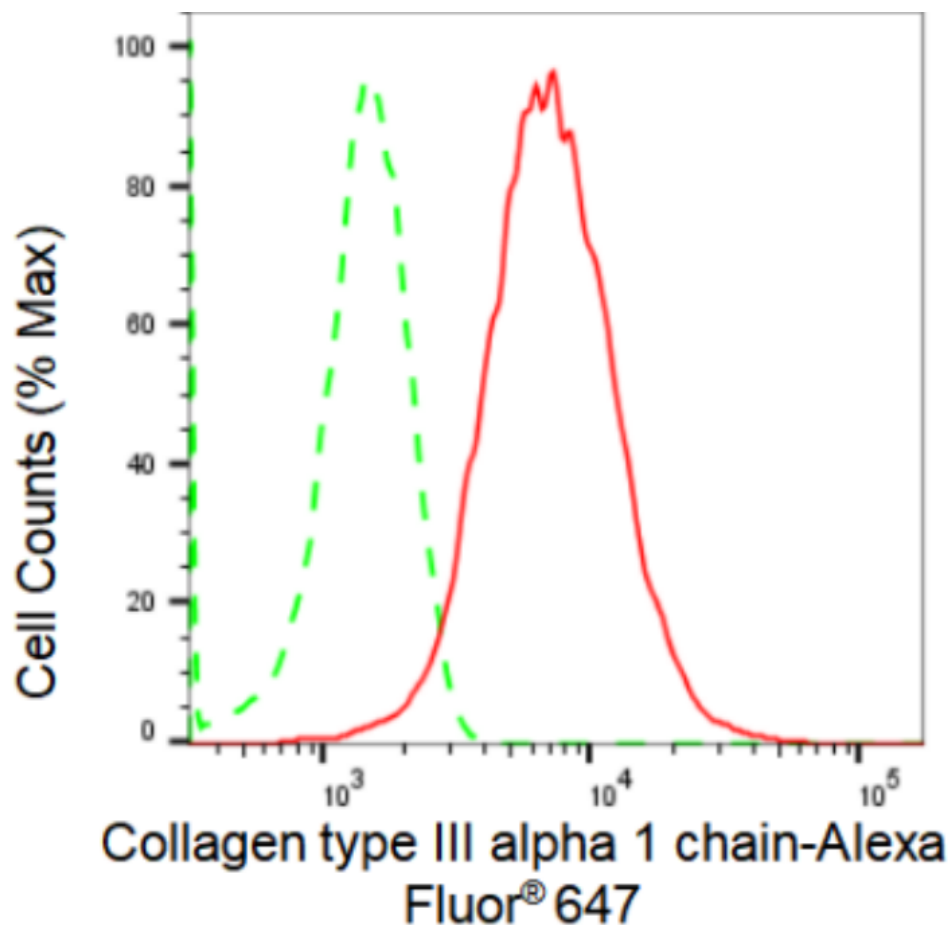
SALES@GENUINBIOTECH.COM
FAX: +1-540-855-7041

WWW.GENUINBIOTECH.COM

Anti-Collagen type III alpha 1 chain Recombinant Rabbit Monoclonal Antibody

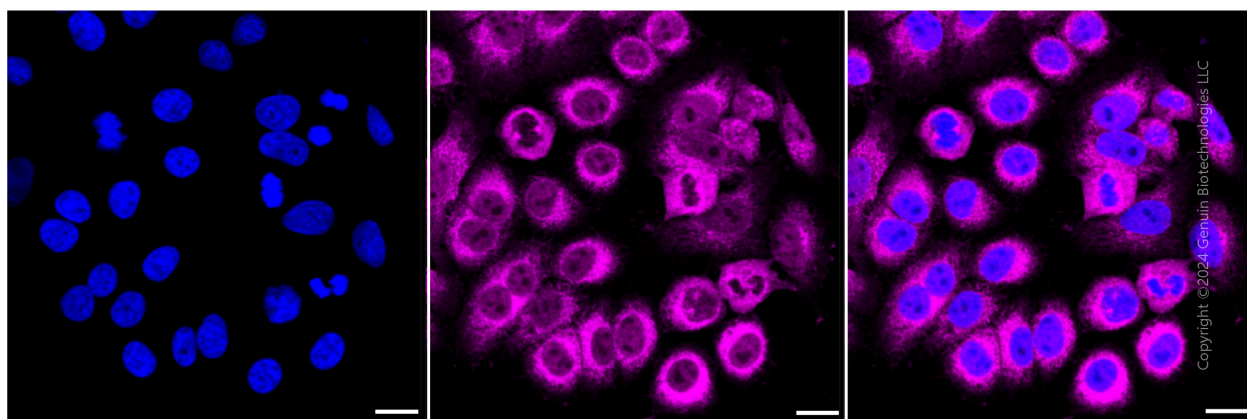
PAGE 2

Validation Data



Copyright ©2024 Genuin Biotechnologies LLC

Flow cytometric analysis of Collagen type III alpha 1 chain expression in HepG2 cells using Collagen type III alpha 1 chain antibody (Cat#7543, 1:2,000). Green, isotype control; red, Collagen type III alpha 1 chain.



Copyright ©2024 Genuin Biotechnologies LLC

Immunocytochemical staining of HepG2 cells with Collagen type III alpha 1 chain antibody (Cat#7543, 1:1,000). Nuclei were stained blue with DAPI; Collagen type III alpha 1 chain was stained magenta with Alexa Fluor® 647. Images were taken using Leica stellaris 5. Protein

SUPPORT

SUPPORT@GENUINBIOTECH.COM
TEL: +1-540-855-7041

ORDERS

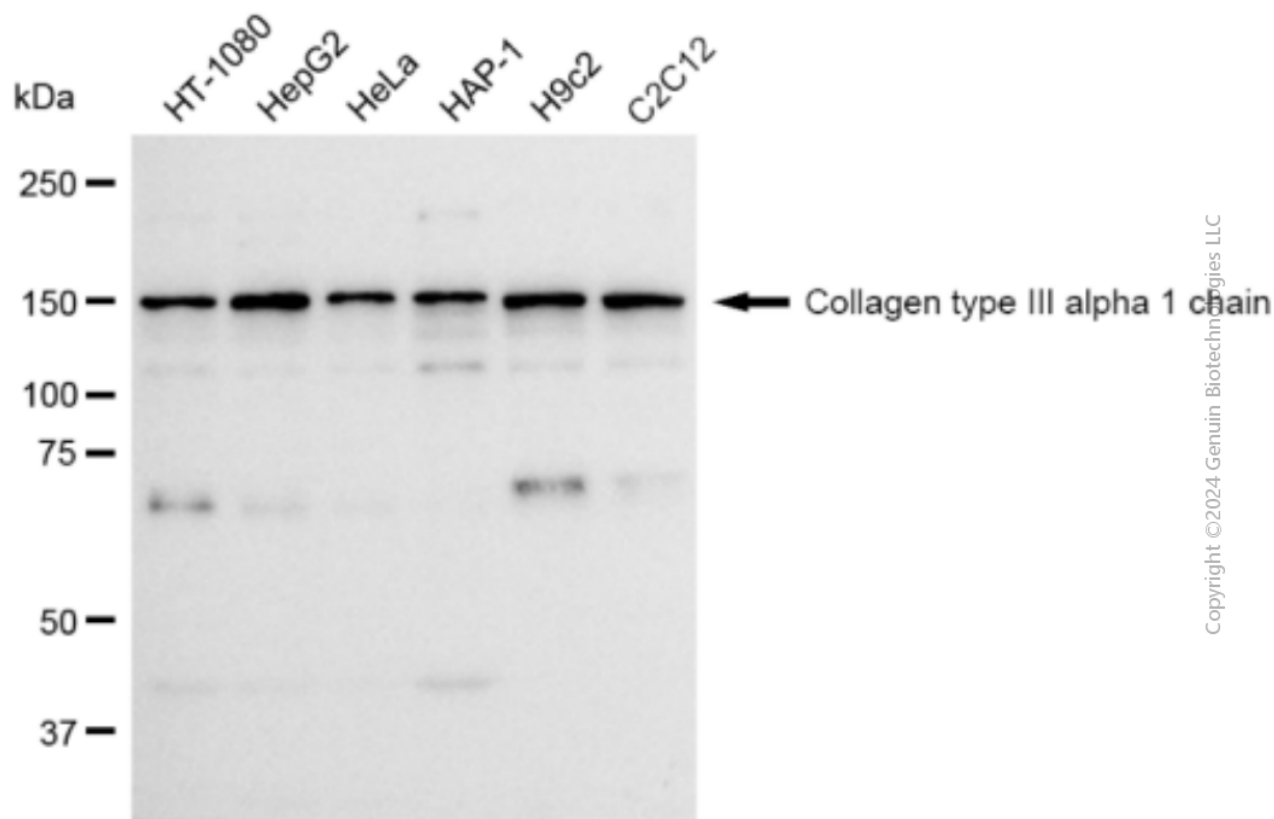
SALES@GENUINBIOTECH.COM
FAX: +1-540-855-7041

WWW.GENUINBIOTECH.COM

Anti-Collagen type III alpha 1 chain Recombinant Rabbit Monoclonal Antibody

PAGE 3

abundance based on laser Intensity and smart gain: High. Scale bar: 20 μ m.



Copyright ©2024 Genuin Biotechnologies LLC

Western blotting analysis using anti-Collagen type III alpha 1 chain antibody (Cat#7543). Total cell lysates (30 μ g) from various cell lines were loaded and separated by SDS-PAGE. The blot was incubated with anti-Collagen type III alpha 1 chain antibody (Cat#7543, 1:5,000) and HRP-conjugated goat anti-rabbit secondary antibody (Cat#201, 1:20,000) respectively. Image was developed using FeQ™ ECL Substrate Kit (Cat#226).

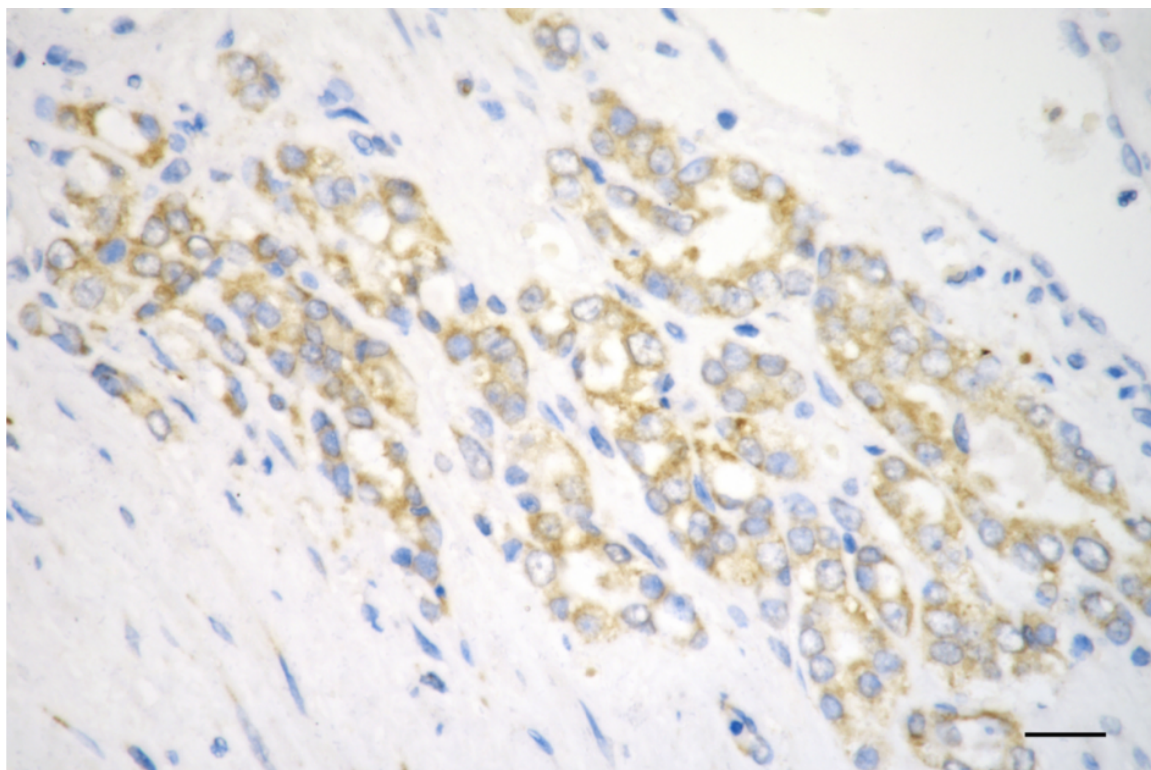
SUPPORT

SUPPORT@GENUINBIOTECH.COM
TEL: +1-540-855-7041

ORDERS

SALES@GENUINBIOTECH.COM
FAX: +1-540-855-7041

WWW.GENUINBIOTECH.COM



Copyright ©2025 Genuin Biotechnologies LLC

Immunohistochemistry was performed on paraffin-embedded human prostatic adenocarcinoma using anti-collagen type III alpha 1 chain antibody (Cat#7543, 1:200). Antigen retrieval was done in sodium citrate buffer (pH 6.0). DAB was used for detection, with hematoxylin counterstaining. Images were acquired using a Nikon Ci-L Plus microscope (40× objective). Scale bar: 25 μ m.