

# Anti-Sirtuin 6 Recombinant Rabbit Monoclonal Antibody



**Catalog #: 7761**

## Aliases

SIRT6; Sirtuin 6; Protein Mono-ADP-Ribosyltransferase Sirtuin-6; NAD-Dependent Protein Deacetylase Sirtuin-6; NAD-Dependent Protein Deacylase Sirtuin-6; Regulatory Protein SIR2 Homolog 6; SIR2-Like Protein 6; SIR2L6; HSIRT6; Sirtuin (Silent Mating Type Information Regulation 2, *S. Cerevisiae*, Homolog) 6; Sirtuin (Silent Mating Type Information Regulation 2 Homolog) 6 (*S. Cerevisiae*); Sir2-Related Protein Type 6; Sirtuin Type 6; EC 2.3.1.286; EC 2.3.1.-; EC 2.4.2.-

## Background

Gene Name: SIRT6

NCBI Gene Entry: [51548](#)

UniProt Entry: [Q8N6T7](#)

## Application Information

Molecular Weight: Predicted, 39 kDa; observed, 42 kDa

Clonality: Rabbit monoclonal antibody

Clone ID: 23GB1135

Species Reactivity: Human

Applications Tested: Western blotting (WB), flow cytometry (FCM), immunocytochemistry (IC)

## Immunogen

A synthesized peptide derived from human SIRT6

## Isotype

Rabbit IgG

## Storage Buffer

Supplied in PBS (pH 7.4) containing 50% glycerol, and 0.02% sodium azide.

## Storage

Store at -20 °C for one year.

## Recommended Dilutions

Western Blotting (WB): 1:1,000-1:5,000

Flow Cytometry (FCM): 1:2,000

Immunocytochemistry (IC): 1:100-1:1,000

---

### SUPPORT

SUPPORT@GENUINBIOTECH.COM  
TEL: +1-540-855-7041

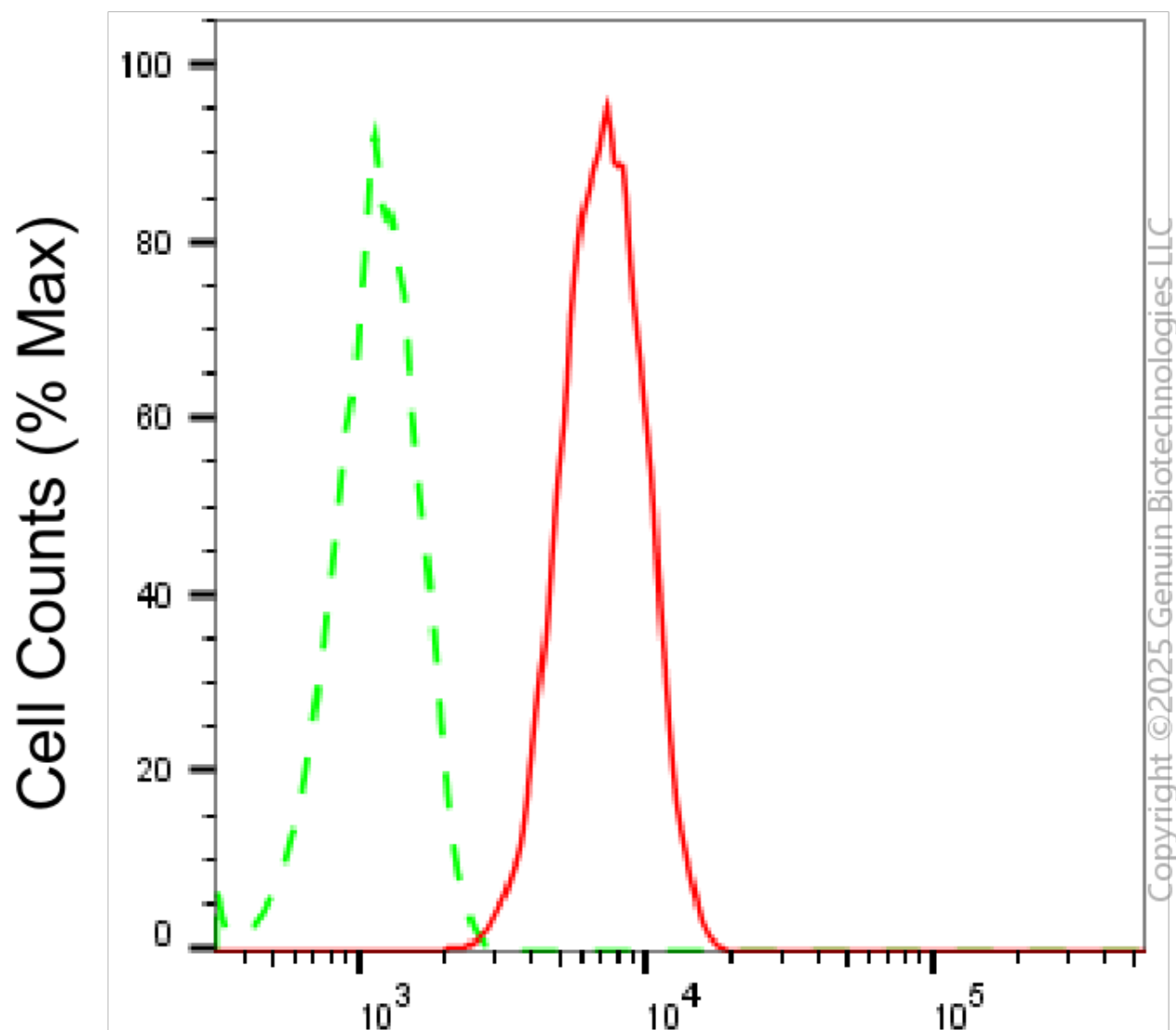
### ORDERS

SALES@GENUINBIOTECH.COM  
FAX: +1-540-855-7041

[WWW.GENUINBIOTECH.COM](http://WWW.GENUINBIOTECH.COM)

**Note:** This product is for research use only.

## Validation Data



## SIRT6-Alexa Fluor® 647

Flow cytometric analysis of SIRT6 expression in HT-1080 cells using anti-SIRT6 antibody (Cat#7761, 1:2,000). Green, isotype control; red, SIRT6.

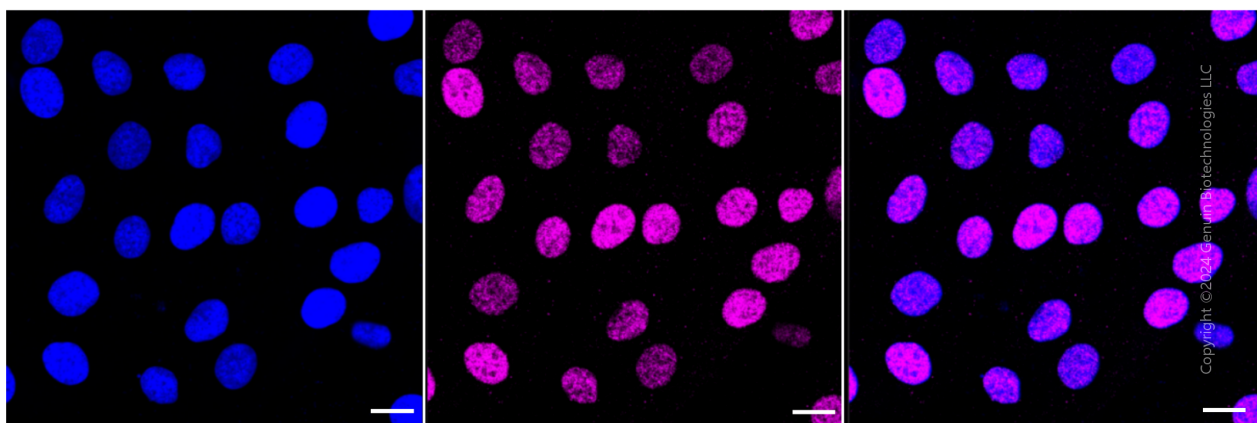
### SUPPORT

SUPPORT@GENUINBIOTECH.COM  
TEL: +1-540-855-7041

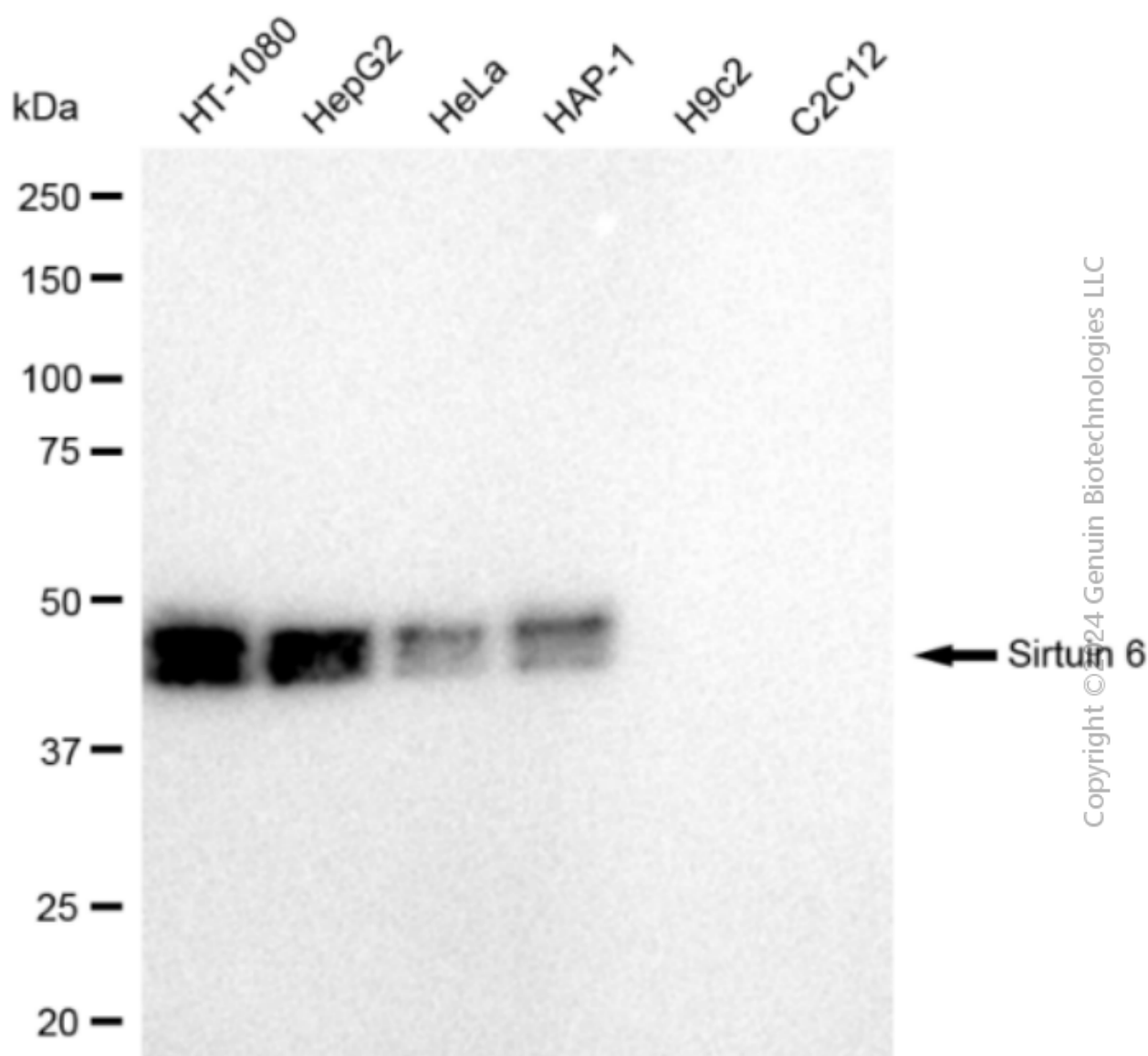
### ORDERS

SALES@GENUINBIOTECH.COM  
FAX: +1-540-855-7041

[WWW.GENUINBIOTECH.COM](http://WWW.GENUINBIOTECH.COM)



Immunocytochemical staining of HT-1080 cells with Sirtuin 6 antibody (Cat#7761, 1:1,000). Nuclei were stained blue with DAPI; Sirtuin 6 was stained magenta with Alexa Fluor® 647. Images were taken using Leica stellaris 5. Protein abundance based on laser Intensity and smart gain: Medium. Scale bar: 20  $\mu$ m.



Western blotting analysis using anti-Sirtuin 6 antibody (Cat#7761). Total cell lysates (30 µg) from various cell lines were loaded and separated by SDS-PAGE. The blot was incubated with anti-Sirtuin 6 antibody (Cat#7761, 1:5,000) and HRP-conjugated goat anti-rabbit secondary antibody (Cat#201, 1:20,000) respectively. Image was developed using FeQ™ ECL Substrate Kit (Cat#226).