

Anti-BCL11 transcription factor B Recombinant Rabbit Monoclonal Antibody



Catalog #: 8141

Aliases

BCL11 Transcription Factor B; CTIP2; BAF Chromatin Remodeling Complex Subunit BCL11B; HRIT1-Alpha; SMARCM2; CTIP-2; Radiation-Induced Tumor Suppressor Gene 1 Protein; B-Cell CLL/Lymphoma 11B (Zinc Finger Protein); BCL11B, BAF Complex Component; COUP-TF-Interacting Protein 2; B-Cell Lymphoma/Leukemia 11B; B Cell CLL/Lymphoma 11B; ZNF856B; BCL-11B; HRit1; RIT1; B-Cell CLL/Lymphoma 11B/T-Cell Receptor Delta Constant Region Fusion Protein; Zinc Finger Protein HRit1 Alpha; B-Cell Lymphoma/Leukaemia 11B; B-Cell CLL/Lymphoma 11B; BCL11B/TRDC Fusion; ATL1-Alpha; ATL1-Delta; ATL1-Gamma; ATL1-Beta; IDDFSTA; IMD49; ATL1

Background

Gene Name: BCL11B

NCBI Gene Entry: [64919](#)

UniProt Entry: [Q9C0K0](#)

Application Information

Molecular Weight: Predicted, 96 kDa; observed, 140 kDa

Clonality: Rabbit monoclonal antibody

Clone ID: 23GB1630

Species Reactivity: Human

Applications Tested: Western blotting (WB), flow cytometry (FCM), immunocytochemistry (IC)

Immunogen

A synthesized peptide derived from human Ctip2

Isotype

Rabbit IgG

Storage Buffer

Supplied in PBS (pH 7.4) containing 50% glycerol, and 0.02% sodium azide.

Storage

Store at -20 °C for one year.

Recommended Dilutions

Western Blotting (WB): 1:1,000-1:5,000

SUPPORT

SUPPORT@GENUINBIOTECH.COM
TEL: +1-540-855-7041

ORDERS

SALES@GENUINBIOTECH.COM
FAX: +1-540-855-7041

WWW.GENUINBIOTECH.COM

Anti-BCL11 transcription factor B Recombinant Rabbit Monoclonal Antibody

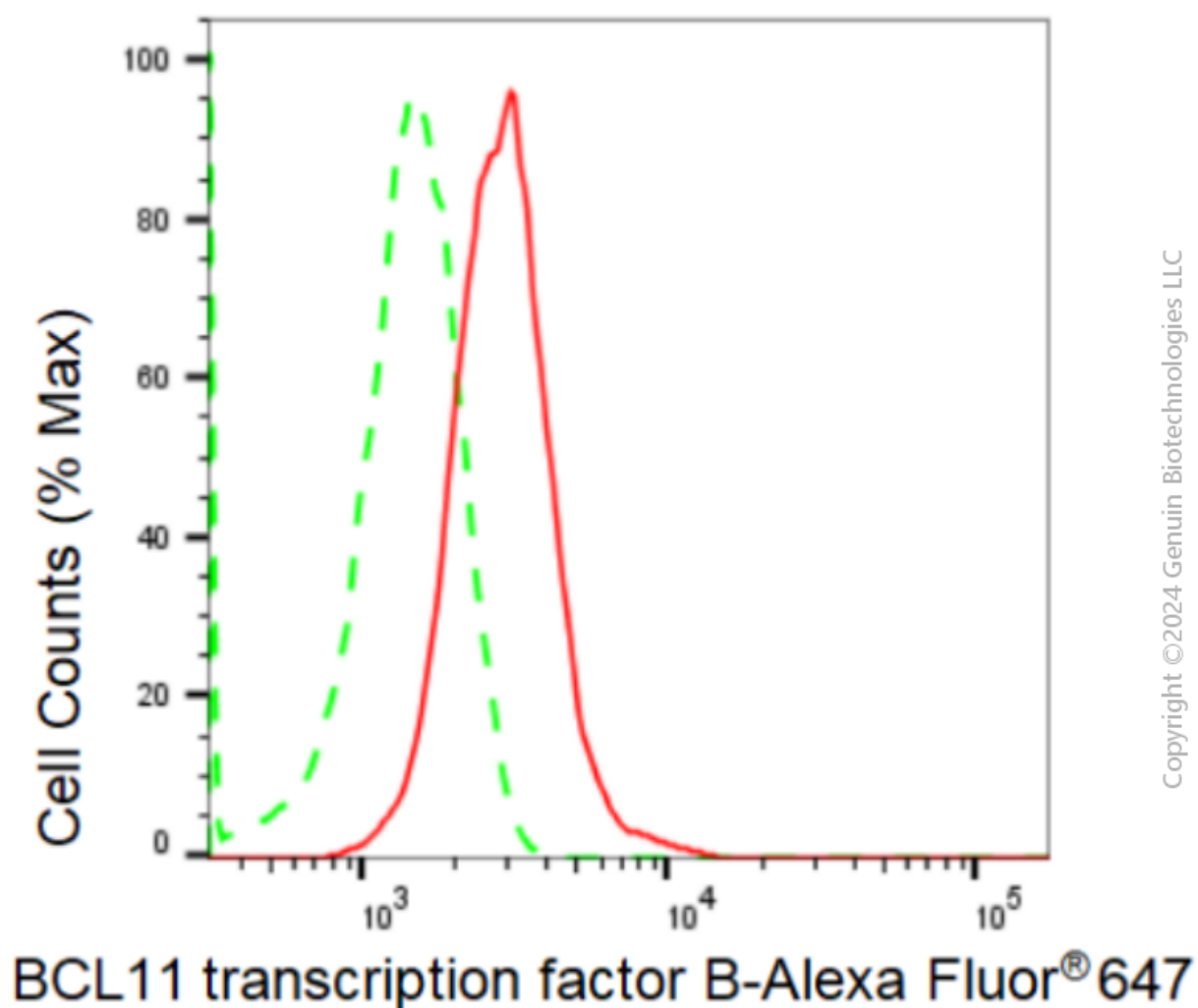
PAGE 2

Flow Cytometry (FCM): 1:2,000

Immunocytochemistry (IC): 1:100-1:1,000

Note: This product is for research use only.

Validation Data



Flow cytometric analysis of BCL11 transcription factor B expression in HepG2 cells using BCL11 transcription factor B antibody (Cat#8141, 1:2,000). Green, isotype control; red, BCL11 transcription factor B.

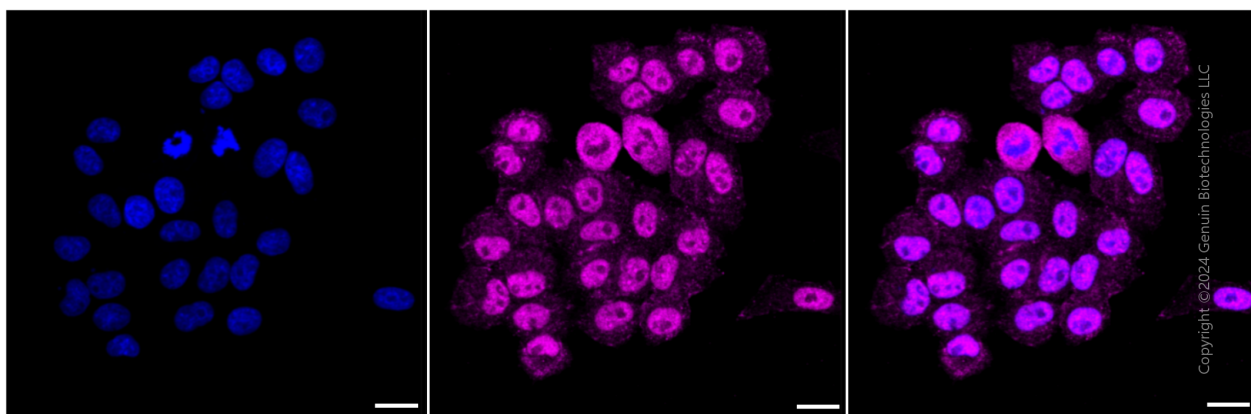
SUPPORT

SUPPORT@GENUINBIOTECH.COM
TEL: +1-540-855-7041

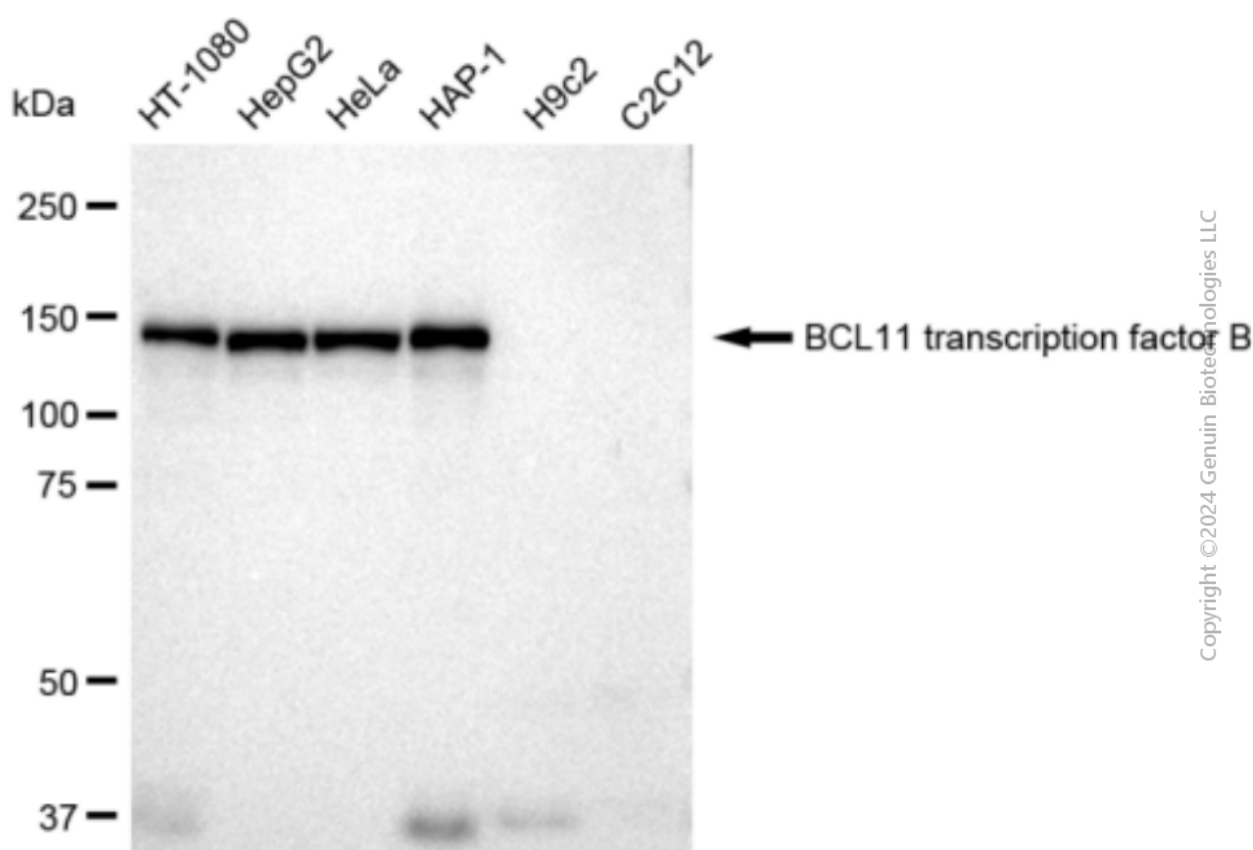
ORDERS

SALES@GENUINBIOTECH.COM
FAX: +1-540-855-7041

WWW.GENUINBIOTECH.COM



Immunocytochemical staining of HepG2 cells with BCL11 transcription factor B antibody (Cat#8141, 1:1,000). Nuclei were stained blue with DAPI; BCL11 transcription factor B was stained magenta with Alexa Fluor® 647. Images were taken using Leica stellaris 5. Protein abundance based on laser Intensity and smart gain: High. Scale bar: 20 μ m.



Western blotting analysis using anti-BCL11 transcription factor B antibody (Cat#8141). Total cell lysates (30 μ g) from various cell lines were loaded and separated by SDS-PAGE. The blot was incubated with anti-BCL11 transcription factor B antibody (Cat#8141, 1:5,000) and HRP-conjugated goat anti-rabbit secondary antibody (Cat#201, 1:20,000) respectively. Image was

Anti-BCL11 transcription factor B Recombinant Rabbit Monoclonal Antibody

PAGE 4

developed using FeQ™ ECL Substrate Kit (Cat#226).

SUPPORT

SUPPORT@GENUINBIOTECH.COM
TEL: +1-540-855-7041

ORDERS

SALES@GENUINBIOTECH.COM
FAX: +1-540-855-7041

WWW.GENUINBIOTECH.COM