

Anti-Prohibitin Recombinant Rabbit Monoclonal Antibody



Catalog #: 8311

Aliases

Prohibitin 1; PHB; Prohibitin; Epididymis Secretory Sperm Binding Protein Li 54e; Epididymis Luminal Protein 215; HEL-S-54e; HEL-215

Background

Gene Name: PHB1

NCBI Gene Entry: [5245](#)

UniProt Entry: [P35232](#)

Application Information

Molecular Weight: Predicted, 30 kDa; observed, 30 kDa

Clonality: Rabbit monoclonal antibody

Clone ID: 23GB945

Species Reactivity: Human, mouse, rat

Applications Tested: Western blotting (WB), flow cytometry (FCM), immunocytochemistry (IC)

Immunogen

A synthesized peptide derived from human Prohibitin

Isotype

Rabbit IgG

Storage Buffer

Supplied in PBS (pH 7.4) containing 50% glycerol, and 0.02% sodium azide.

Storage

Store at -20 °C for one year.

Recommended Dilutions

Western Blotting (WB): 1:1,000-1:5,000

Flow Cytometry (FCM): 1:2,000

Immunocytochemistry (IC): 1:100-1:1,000

Note: This product is for research use only.

Validation Data

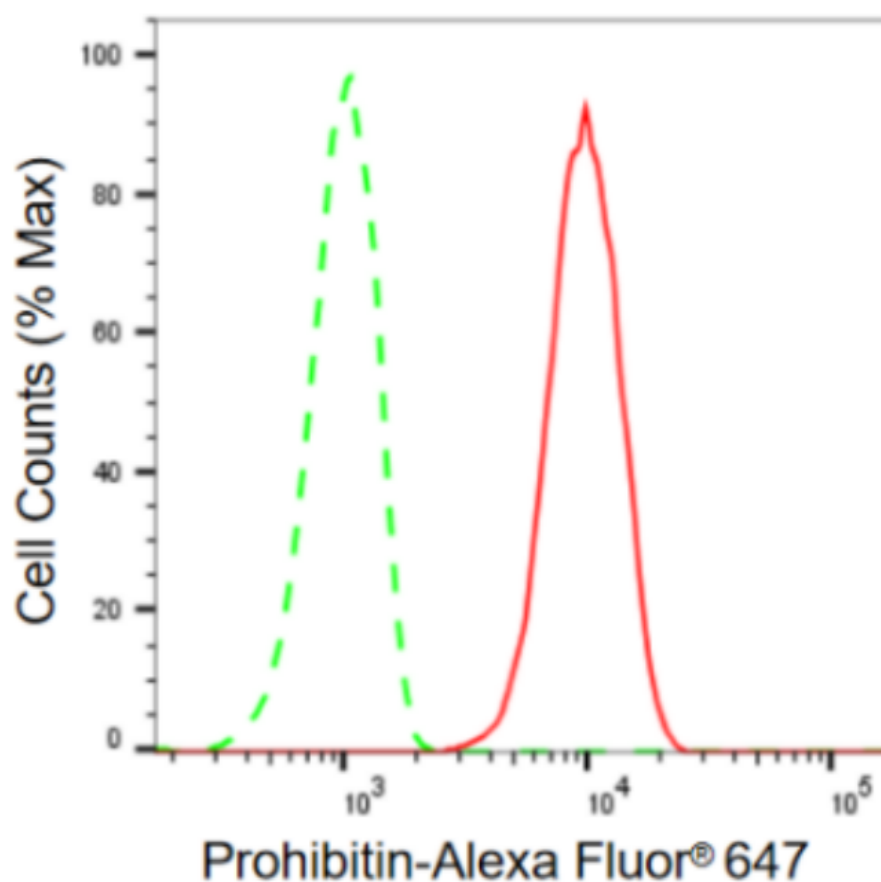
SUPPORT

SUPPORT@GENUINBIOTECH.COM
TEL: +1-540-855-7041

ORDERS

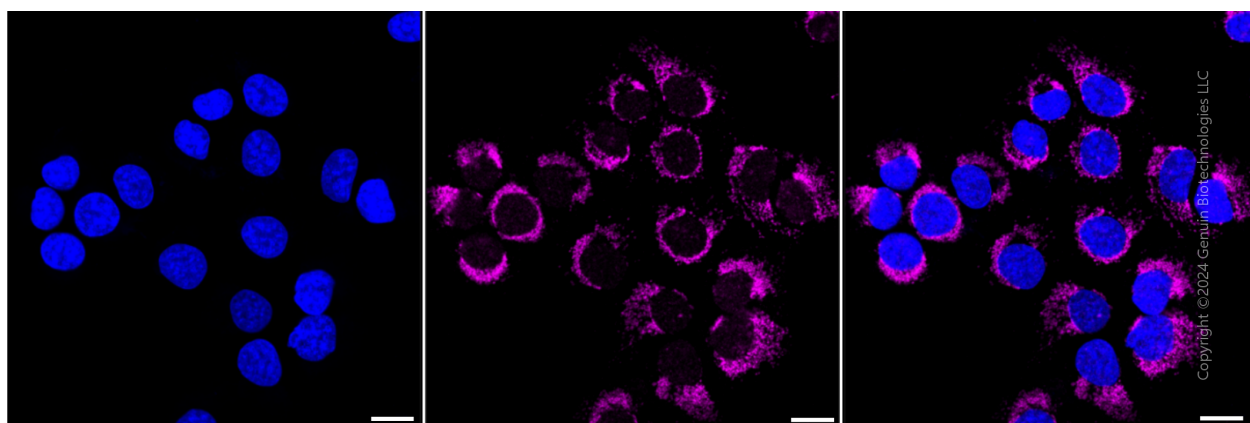
SALES@GENUINBIOTECH.COM
FAX: +1-540-855-7041

WWW.GENUINBIOTECH.COM



Copyright ©2024 Genuin Biotechnologies LLC

Flow cytometric analysis of Prohibitin expression in HT-1080 cells using Prohibitin antibody (Cat#8311, 1:2,000). Green, isotype control; red, Prohibitin.



Copyright ©2024 Genuin Biotechnologies LLC

Immunocytochemical staining of HT-1080 cells with Prohibitin antibody (Cat#8311, 1:1,000). Nuclei were stained blue with DAPI; Prohibitin was stained magenta with Alexa Fluor® 647. Images were taken using Leica stellaris 5. Protein abundance based on laser Intensity and smart gain: Medium. Scale bar: 20 μ m.

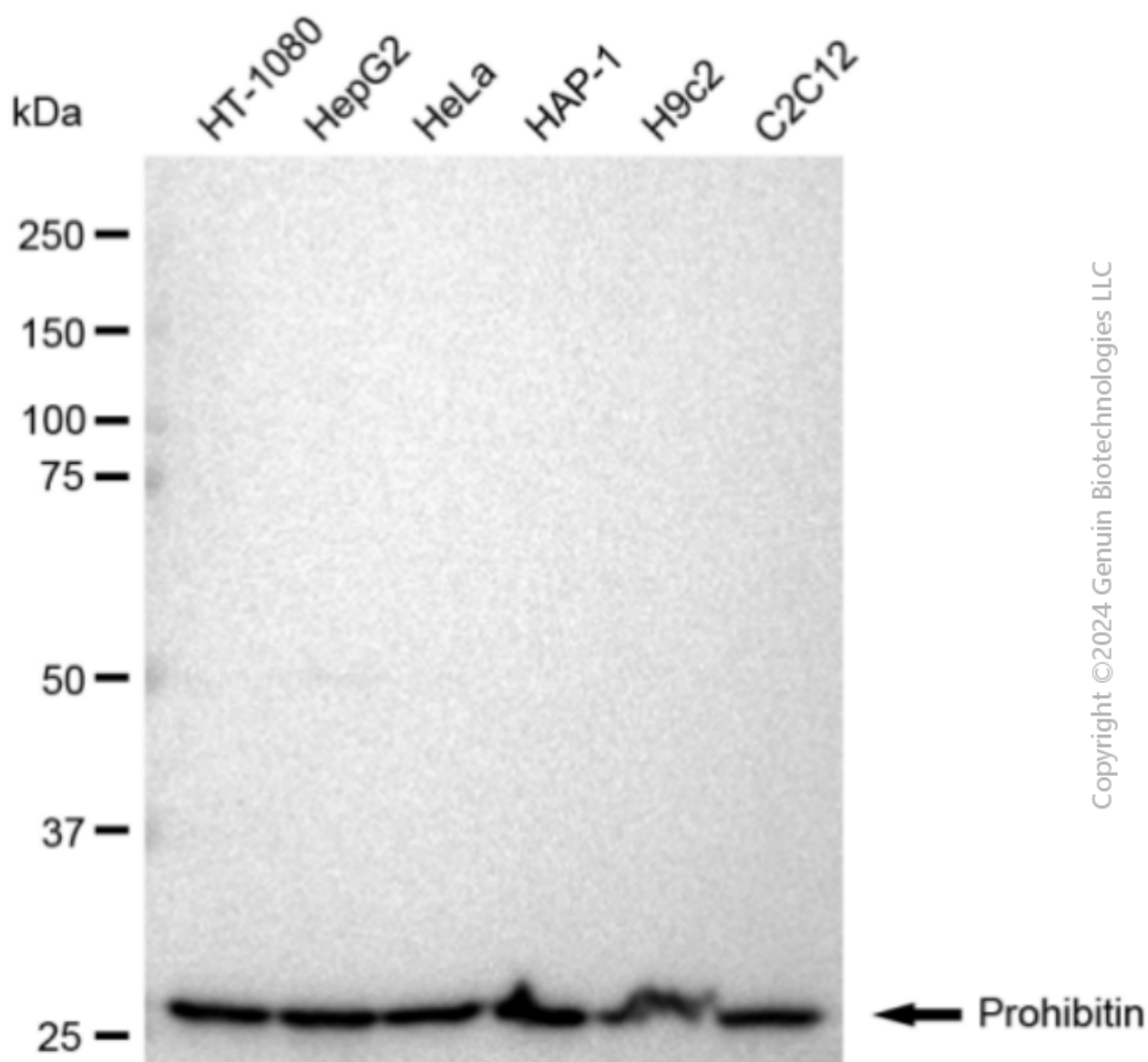
SUPPORT

SUPPORT@GENUINBIOTECH.COM
TEL: +1-540-855-7041

ORDERS

SALES@GENUINBIOTECH.COM
FAX: +1-540-855-7041

WWW.GENUINBIOTECH.COM



Copyright ©2024 Genuin Biotechnologies LLC

Western blotting analysis using anti-Prohibitin antibody (Cat#8311). Total cell lysates (30 µg) from various cell lines were loaded and separated by SDS-PAGE. The blot was incubated with anti-Prohibitin antibody (Cat#8311, 1:5,000) and HRP-conjugated goat anti-rabbit secondary antibody (Cat#201, 1:20,000) respectively. Image was developed using FeQ™ ECL Substrate Kit (Cat#226).

SUPPORT

SUPPORT@GENUINBIOTECH.COM
TEL: +1-540-855-7041

ORDERS

SALES@GENUINBIOTECH.COM
FAX: +1-540-855-7041

WWW.GENUINBIOTECH.COM