

# Anti-Erb-b2 receptor tyrosine kinase 4 Recombinant Rabbit Monoclonal Antibody



**Catalog #: 8611**

## Aliases

Erb-B2 Receptor Tyrosine Kinase 4; HER4; ALS19; V-Erb-B2 Avian Erythroblastic Leukemia Viral Oncogene Homolog; Tyrosine Kinase-Type Cell Surface Receptor HER4; Human Epidermal Growth Factor Receptor; Receptor Tyrosine-Protein Kinase ErbB-4; Proto-Oncogene-Like Protein C-ErbB-4; EC 2.7.10.1; P180erbB4; V-Erb-A Avian Erythroblastic Leukemia Viral Oncogene Homolog-Like; Avian Erythroblastic Leukemia Viral (V-Erb-B2) Oncogene Homolog; V-Erb-A Erythroblastic Leukemia Viral Oncogene Homolog; EC 2.7.10

## Background

Gene Name: ERBB4

NCBI Gene Entry: [2066](#)

UniProt Entry: [Q15303](#)

## Application Information

Molecular Weight: Predicted, 147 kDa; observed, 160 kDa

Clonality: Rabbit monoclonal antibody

Clone ID: 23GB1245

Species Reactivity: Human

Applications Tested: Western blotting (WB), immunocytochemistry (IC)

## Immunogen

A synthesized peptide derived from human ErbB4 (HER4)

## Isotype

Rabbit IgG

## Storage Buffer

Supplied in PBS (pH 7.4) containing 50% glycerol, and 0.02% sodium azide.

## Storage

Store at -20 °C for one year.

## Recommended Dilutions

Western Blotting (WB): 1:1,000-1:5,000

Immunocytochemistry (IC): 1:100-1:1,000

---

### SUPPORT

SUPPORT@GENUINBIOTECH.COM  
TEL: +1-540-855-7041

### ORDERS

SALES@GENUINBIOTECH.COM  
FAX: +1-540-855-7041

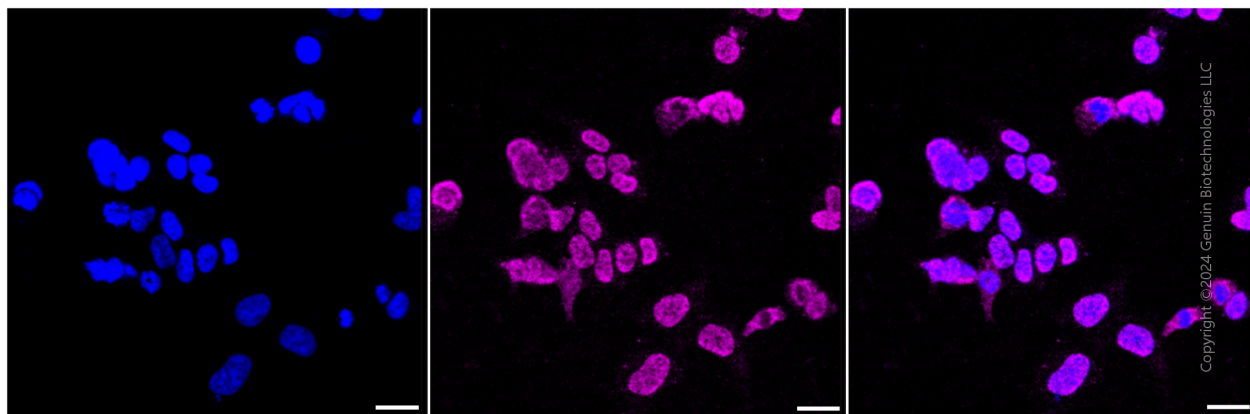
[WWW.GENUINBIOTECH.COM](http://WWW.GENUINBIOTECH.COM)

# Anti-Erb-b2 receptor tyrosine kinase 4 Recombinant Rabbit Monoclonal Antibody

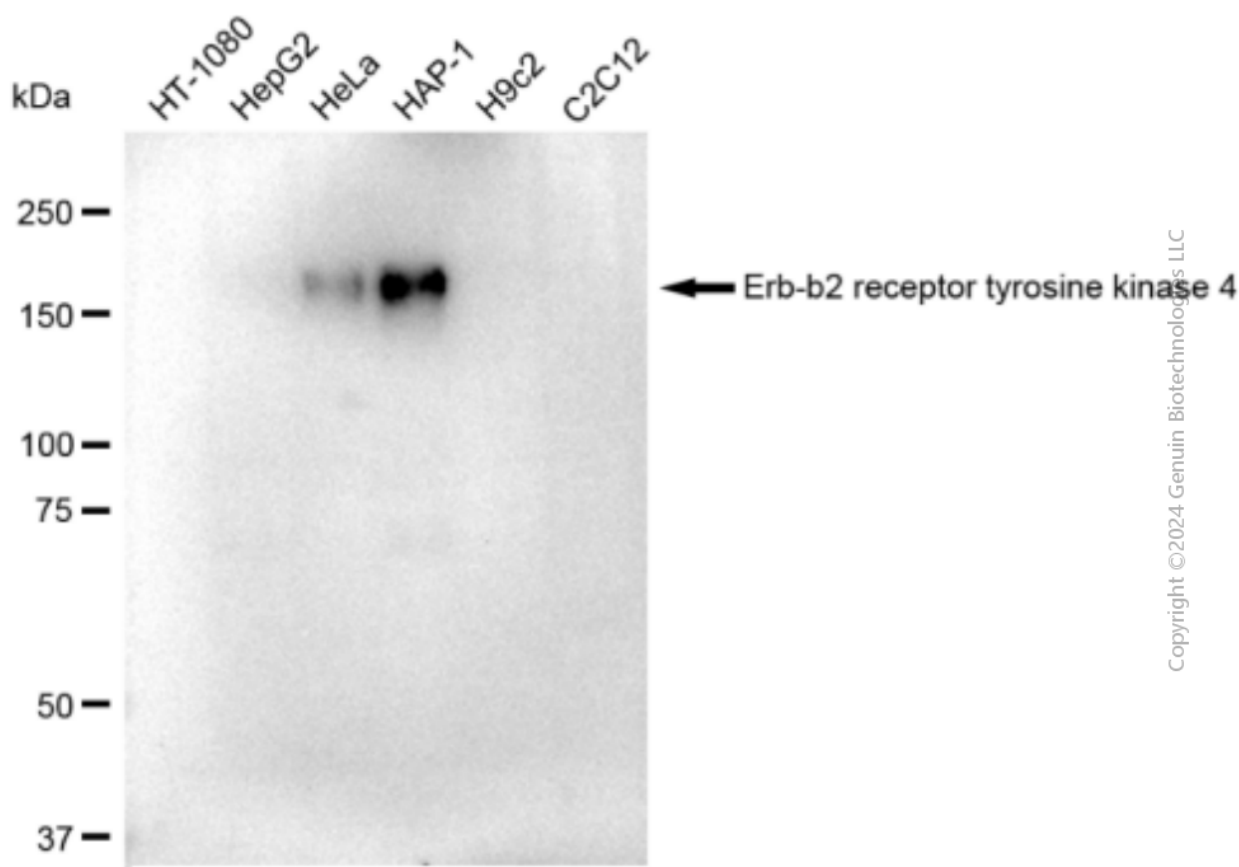
PAGE 2

**Note:** This product is for research use only.

## Validation Data



Immunocytochemical staining of HAP-1 cells with Erb-b2 receptor tyrosine kinase 4 antibody (Cat#8611, 1:1,000). Nuclei were stained blue with DAPI; Erb-b2 receptor tyrosine kinase 4 was stained magenta with Alexa Fluor® 647. Images were taken using Leica stellaris 5. Protein abundance based on laser Intensity and smart gain: Medium. Scale bar: 20  $\mu$ m.



Western blotting analysis using anti-Erb-b2 receptor tyrosine kinase 4 antibody (Cat#8611). Total

### SUPPORT

SUPPORT@GENUINBIOTECH.COM  
TEL: +1-540-855-7041

### ORDERS

SALES@GENUINBIOTECH.COM  
FAX: +1-540-855-7041

WWW.GENUINBIOTECH.COM

## **Anti-Erb-b2 receptor tyrosine kinase 4 Recombinant Rabbit Monoclonal Antibody**

PAGE 3

cell lysates (30 µg) from various cell lines were loaded and separated by SDS-PAGE. The blot was incubated with anti-Erb-b2 receptor tyrosine kinase 4 antibody (Cat#8611, 1:5,000) and HRP-conjugated goat anti-rabbit secondary antibody (Cat#201, 1:20,000) respectively. Image was developed using FeQ™ ECL Substrate Kit (Cat#226).

---

### **SUPPORT**

SUPPORT@GENUINBIOTECH.COM  
TEL: +1-540-855-7041

### **ORDERS**

SALES@GENUINBIOTECH.COM  
FAX: +1-540-855-7041

**WWW.GENUINBIOTECH.COM**