

Anti-Calbindin 2 Recombinant Rabbit Monoclonal Antibody



Catalog #: 9141

Aliases

CALB2; Calbindin 2; Calretinin; CAL2; 29 KDa Calbindin; CAB29; CR; Testicular Secretory Protein Li; Calbindin 2, 29kDa (Calretinin); Calbindin 2, (29kD, Calretinin); Calbindin D29K

Background

Gene Name: CALB2

NCBI Gene Entry: [794](#)

UniProt Entry: [P22676](#)

Application Information

Molecular Weight: Predicted, 32 kDa; observed, 29 kDa

Clonality: Rabbit monoclonal antibody

Clone ID: 23GB1125

Species Reactivity: Human, mouse, rat

Applications Tested: Western blotting (WB), flow cytometry (FCM), immunocytochemistry (IC)

Immunogen

A synthesized peptide derived from human Calretinin

Isotype

Rabbit IgG

Storage Buffer

Supplied in PBS (pH 7.4) containing 50% glycerol, and 0.02% sodium azide.

Storage

Store at -20 °C for one year.

Recommended Dilutions

Western Blotting (WB): 1:1,000-1:5,000

Flow Cytometry (FCM): 1:2,000

Immunocytochemistry (IC): 1:100-1:1,000

Note: This product is for research use only.

Validation Data

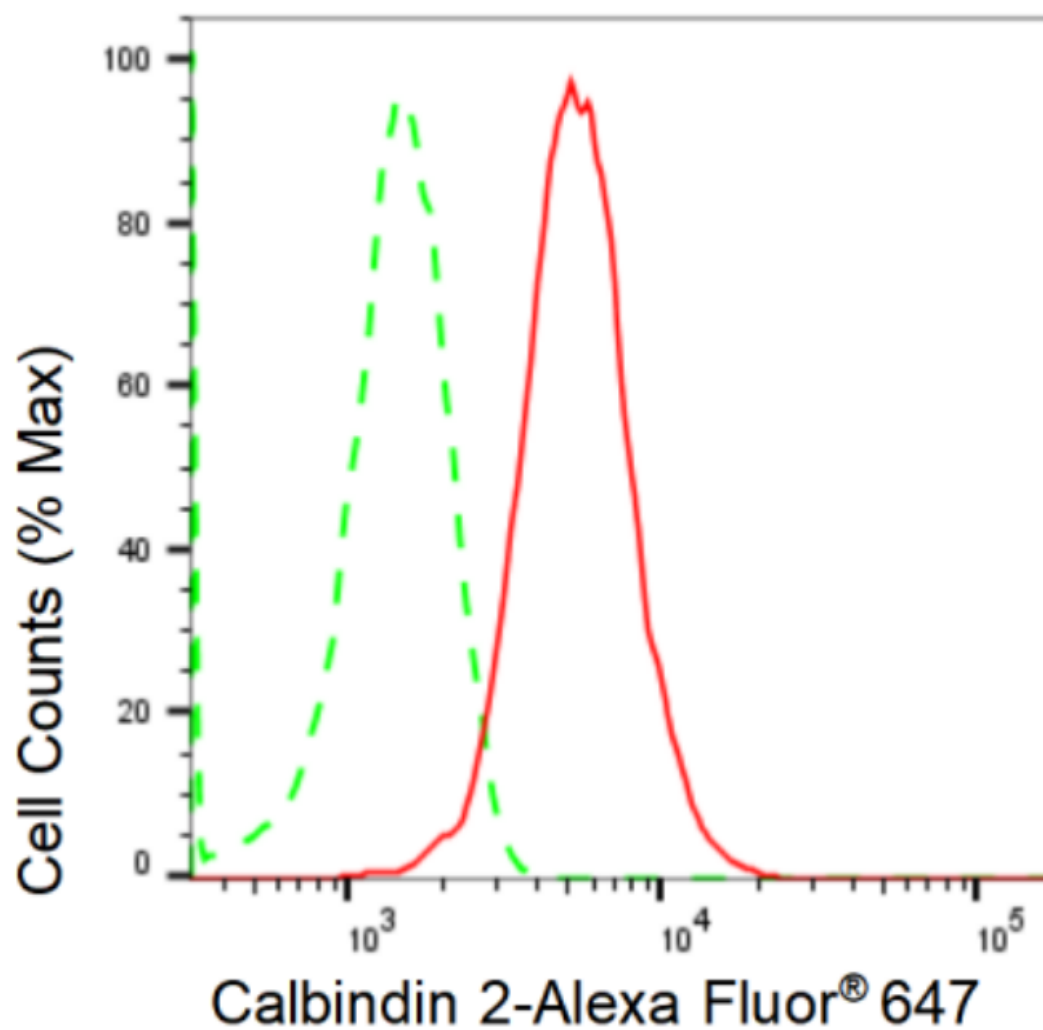
SUPPORT

SUPPORT@GENUINBIOTECH.COM
TEL: +1-540-855-7041

ORDERS

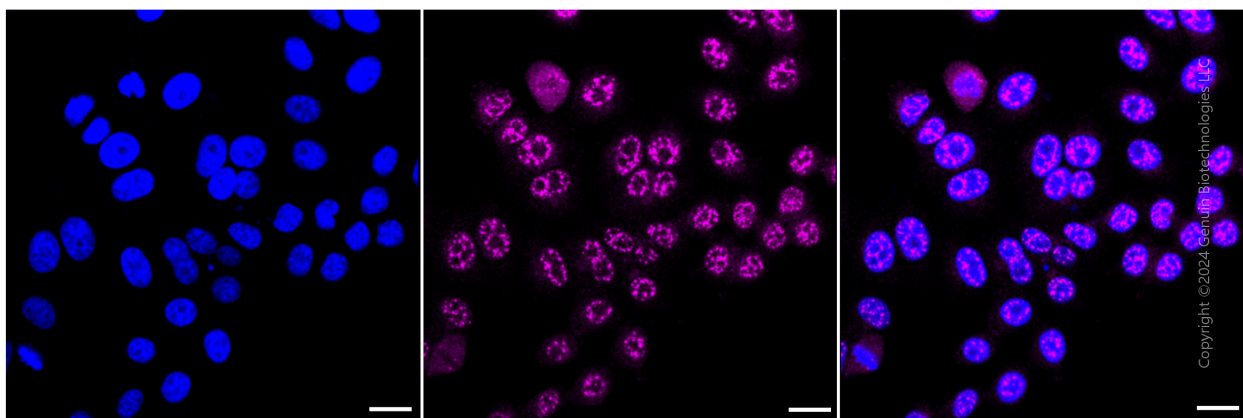
SALES@GENUINBIOTECH.COM
FAX: +1-540-855-7041

WWW.GENUINBIOTECH.COM



Copyright ©2024 Genuin Biotechnologies LLC

Flow cytometric analysis of Calbindin 2 expression in HepG2 cells using Calbindin 2 antibody (Cat#9141, 1:2,000). Green, isotype control; red, Calbindin 2.



Copyright ©2024 Genuin Biotechnologies LLC

Immunocytochemical staining of HepG2 cells with Calbindin 2 antibody (Cat#9141, 1:1,000).

SUPPORT

SUPPORT@GENUINBIOTECH.COM
TEL: +1-540-855-7041

ORDERS

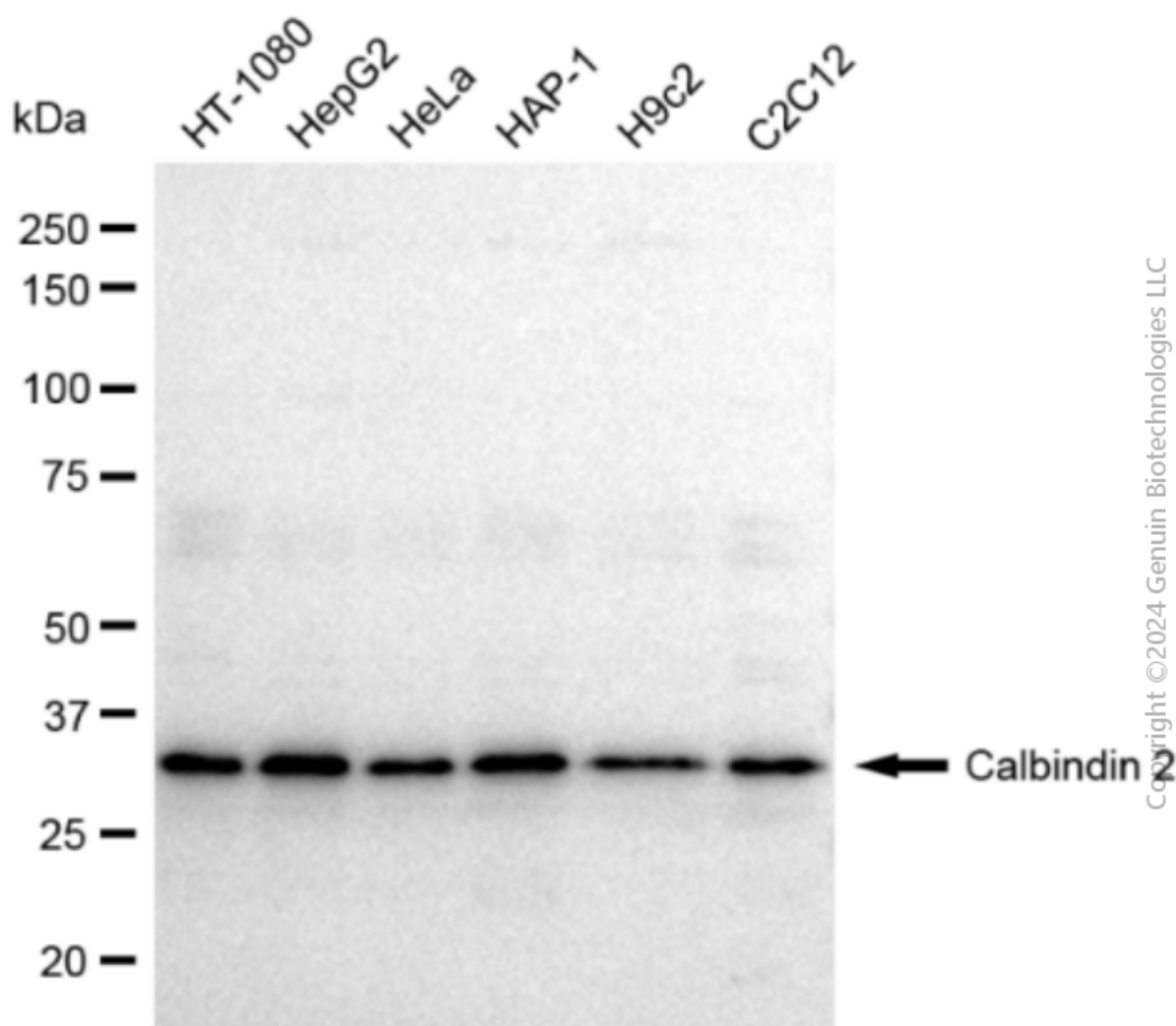
SALES@GENUINBIOTECH.COM
FAX: +1-540-855-7041

WWW.GENUINBIOTECH.COM

Anti-Calbindin 2 Recombinant Rabbit Monoclonal Antibody

PAGE 3

Nuclei were stained blue with DAPI; Calbindin 2 was stained magenta with Alexa Fluor® 647. Images were taken using Leica stellaris 5. Protein abundance based on laser Intensity and smart gain: Medium. Scale bar: 20 μ m.



Western blotting analysis using anti-Calbindin 2 antibody (Cat#9141). Total cell lysates (30 μ g) from various cell lines were loaded and separated by SDS-PAGE. The blot was incubated with anti-Calbindin 2 antibody (Cat#9141, 1:5,000) and HRP-conjugated goat anti-rabbit secondary antibody (Cat#201, 1:20,000) respectively. Image was developed using FeQ™ ECL Substrate Kit (Cat#226).

SUPPORT

SUPPORT@GENUINBIOTECH.COM
TEL: +1-540-855-7041

ORDERS

SALES@GENUINBIOTECH.COM
FAX: +1-540-855-7041

WWW.GENUINBIOTECH.COM