

Anti-Cyclin dependent kinase 5 Recombinant Rabbit Monoclonal Antibody



Catalog #: 9245

Aliases

CDK5; CRK6; Cell division protein kinase 5; EC 2.7.11.22; PSSALRE; TAU protein kinase II catalytic subunit; TPKII catalytic subunit; Tau protein kinase II catalytic subunit; kinase Cdk5

Background

Gene Name: CDK5

NCBI Gene Entry: [1020](#)

UniProt Entry: [Q00535](#)

Application Information

Molecular Weight: Predicted, 33 kDa; observed, 33 kDa

Clonality: Rabbit monoclonal antibody

Clone ID: 23GB1425

Species Reactivity: Human, mouse, rat

Applications Tested: Western blotting (WB), flow cytometry (FCM), immunocytochemistry (IC)

Immunogen

A synthesized peptide derived from human Cdk5

Isotype

Rabbit IgG

Storage Buffer

Supplied in PBS (pH 7.4) containing 50% glycerol, and 0.02% sodium azide.

Storage

Store at -20 °C for one year.

Recommended Dilutions

Western Blotting (WB): 1:1,000-1:10,000

Flow Cytometry (FCM): 1:2,000

Immunocytochemistry (IC): 1:100-1:1,000

Note: This product is for research use only.

Validation Data

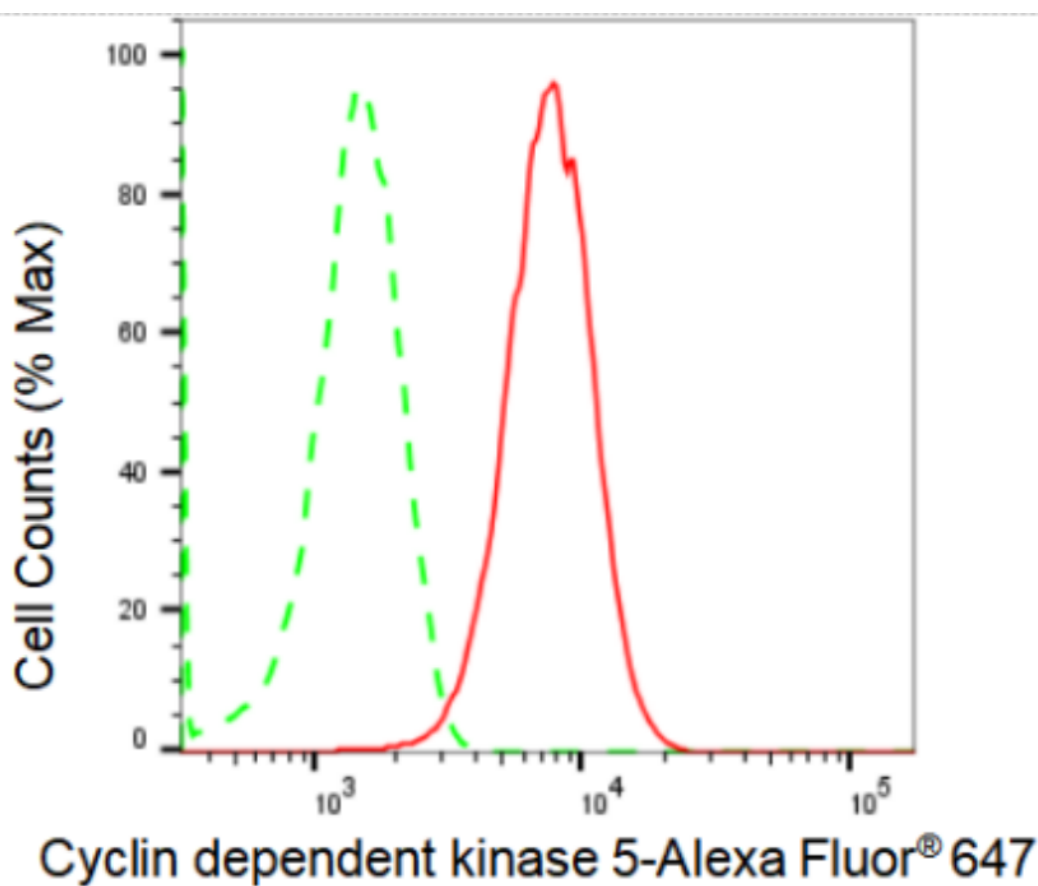
SUPPORT

SUPPORT@GENUINBIOTECH.COM
TEL: +1-540-855-7041

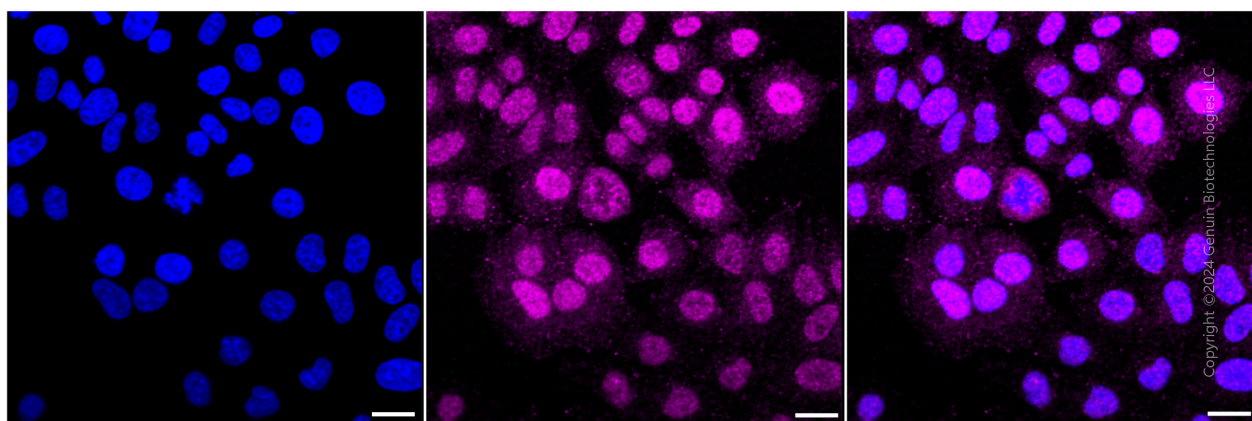
ORDERS

SALES@GENUINBIOTECH.COM
FAX: +1-540-855-7041

WWW.GENUINBIOTECH.COM



Flow cytometric analysis of Cyclin dependent kinase 5 expression in HepG2 cells using Cyclin dependent kinase 5 antibody (Cat#9245, 1:2,000). Green, isotype control; red, Cyclin dependent kinase 5.



Immunocytochemical staining of HepG2 cells with Cyclin dependent kinase 5 antibody (Cat#9245, 1:1,000). Nuclei were stained blue with DAPI; Cyclin dependent kinase 5 was stained magenta with Alexa Fluor® 647. Images were taken using Leica stellaris 5. Protein abundance based on laser Intensity and smart gain: Low. Scale bar: 20 µm.

SUPPORT

SUPPORT@GENUINBIOTECH.COM
TEL: +1-540-855-7041

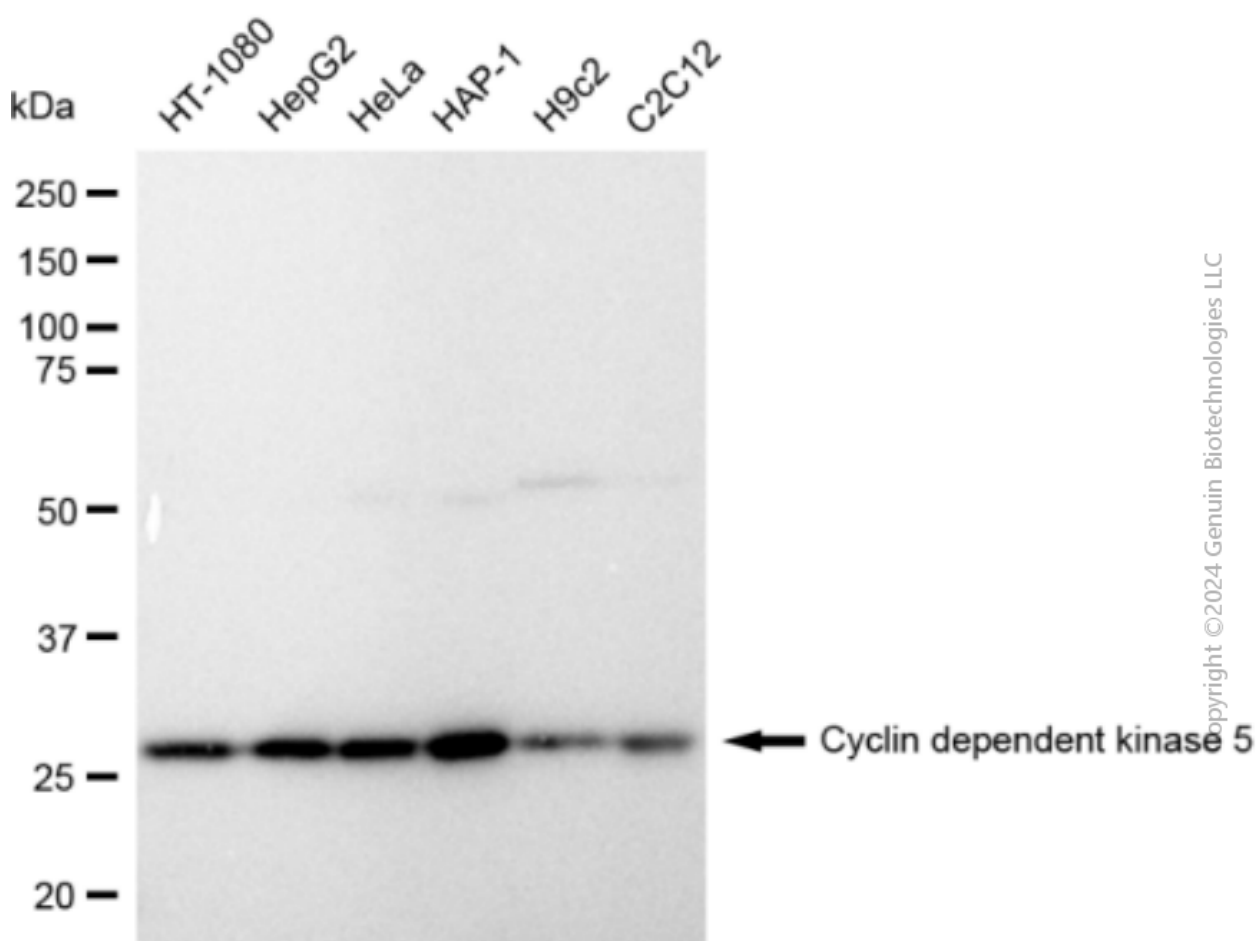
ORDERS

SALES@GENUINBIOTECH.COM
FAX: +1-540-855-7041

WWW.GENUINBIOTECH.COM

Anti-Cyclin dependent kinase 5 Recombinant Rabbit Monoclonal Antibody

PAGE 3



Western blotting analysis using anti-Cyclin dependent kinase 5 antibody (Cat#9245). Total cell lysates (30 μ g) from various cell lines were loaded and separated by SDS-PAGE. The blot was incubated with anti-Cyclin dependent kinase 5 antibody (Cat#9245, 1:10,000) and HRP-conjugated goat anti-rabbit secondary antibody (Cat#201, 1:20,000) respectively. Image was developed using FeQ™ ECL Substrate Kit (Cat#226).

SUPPORT

SUPPORT@GENUINBIOTECH.COM
TEL: +1-540-855-7041

ORDERS

SALES@GENUINBIOTECH.COM
FAX: +1-540-855-7041

WWW.GENUINBIOTECH.COM