

# Anti-Hypoxia inducible factor 1 subunit alpha Recombinant Rabbit Monoclonal Antibody



**Catalog #: 9321**

## Aliases

Hypoxia Inducible Factor 1 Subunit Alpha; Hypoxia Inducible Factor 1, Alpha Subunit (Basic Helix-Loop-Helix Transcription Factor) ; Class E Basic Helix-Loop-Helix Protein 78; Basic-Helix-Loop-Helix-PAS Protein MOP1; Hypoxia-Inducible Factor 1-Alpha; PAS Domain-Containing Protein 8; Member Of PAS Protein 1; HIF-1-Alpha; BHLHe78; PASD8; MOP1; Hypoxia-Inducible Factor 1 Alpha Isoform I.3; Hypoxia Inducible Factor 1 Alpha Subunit; Hypoxia-Inducible Factor1alpha; Member Of PAS Superfamily 1; ARNT Interacting Protein; ARNT-Interacting Protein; HIF-1alpha; HIF1-ALPHA; HIF1-Alpha; BHLHE78; HIF-1A; HIF1

## Background

Gene Name: HIF1A

NCBI Gene Entry: [3091](#)

UniProt Entry: [Q16665](#)

## Application Information

Molecular Weight: Predicted, 93 kDa; observed, 110 kDa

Clonality: Rabbit monoclonal antibody

Clone ID: 23GB1625

Species Reactivity: Human, mouse, rat

Applications Tested: Western blotting (WB), flow cytometry (FCM), immunocytochemistry (IC)

## Immunogen

A synthesized peptide derived from human HIF-1-alpha

## Isotype

Rabbit IgG

## Storage Buffer

Supplied in PBS (pH 7.4) containing 50% glycerol, and 0.02% sodium azide.

## Storage

Store at -20 °C for one year.

## Recommended Dilutions

Western Blotting (WB): 1:1,000-1:5,000

Flow Cytometry (FCM): 1:2,000

---

### SUPPORT

SUPPORT@GENUINBIOTECH.COM  
TEL: +1-540-855-7041

### ORDERS

SALES@GENUINBIOTECH.COM  
FAX: +1-540-855-7041

[WWW.GENUINBIOTECH.COM](http://WWW.GENUINBIOTECH.COM)

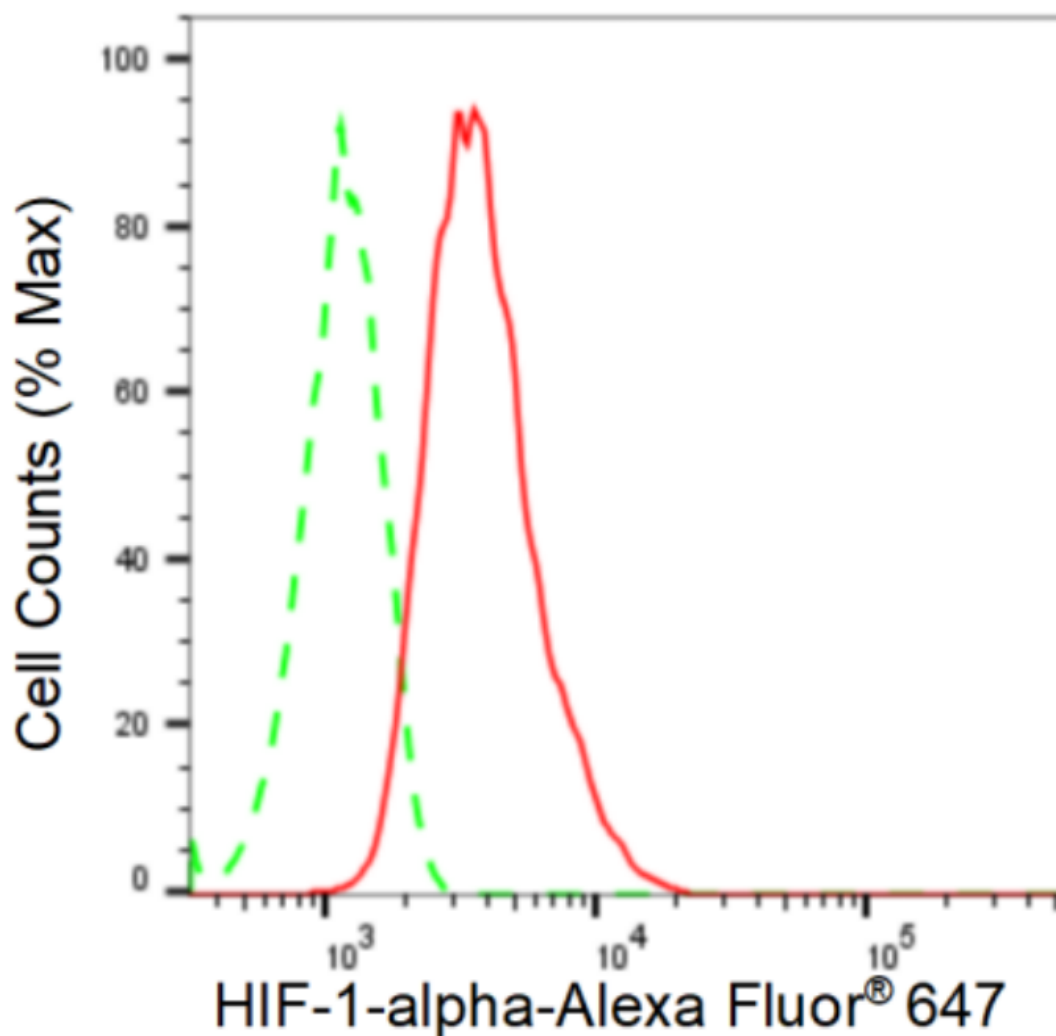
# Anti-Hypoxia inducible factor 1 subunit alpha Recombinant Rabbit Monoclonal Antibody

PAGE 2

Immunocytochemistry (IC): 1:100-1:1,000

**Note:** This product is for research use only.

## Validation Data



Copyright ©2024 Genuin Biotechnologies LLC

Flow cytometric analysis of HIF-1-alpha expression in HT-1080 cells using anti-HIF-1-alpha antibody (Cat#9321, 1:2,000). Green, isotype control; red, HIF-1-alpha.

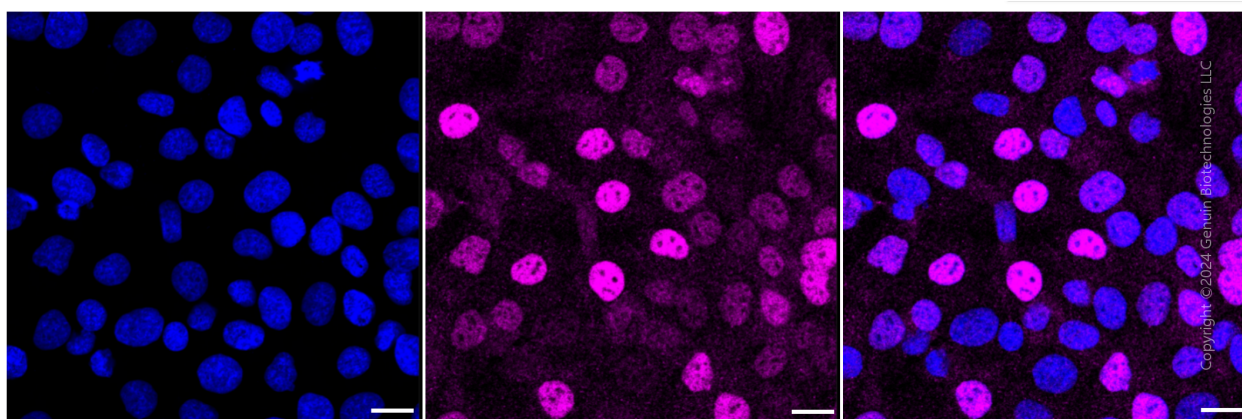
### SUPPORT

SUPPORT@GENUINBIOTECH.COM  
TEL: +1-540-855-7041

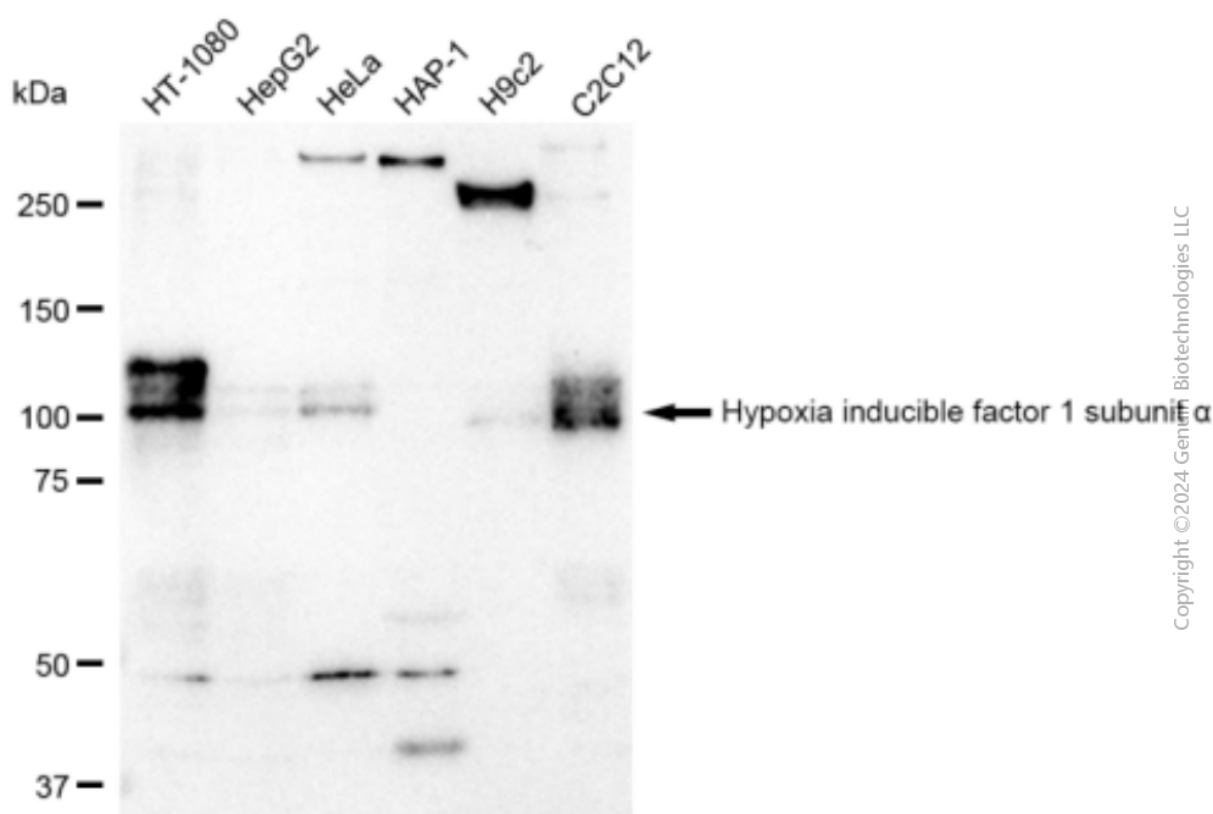
### ORDERS

SALES@GENUINBIOTECH.COM  
FAX: +1-540-855-7041

[WWW.GENUINBIOTECH.COM](http://WWW.GENUINBIOTECH.COM)



Immunocytochemical staining of HT-1080 cells with Hypoxia inducible factor 1 subunit alpha antibody (Cat#9321, 1:1,000) . Nuclei were stained blue with DAPI; Hypoxia inducible factor 1 subunit alpha was stained magenta with Alexa Fluor® 647. Images were taken using Leica stellaris 5. Protein abundance based on laser Intensity and smart gain: Medium. Scale bar: 20  $\mu$ m.



Western blotting analysis using anti-Hypoxia inducible factor 1 subunit alpha antibody (Cat#9321). Total cell lysates (30  $\mu$ g) from various cell lines were loaded and separated by SDS-PAGE. The blot was incubated with anti-Hypoxia inducible factor 1 subunit alpha antibody (Cat#9321, 1:5,000) and HRP-conjugated goat anti-rabbit secondary antibody (Cat#201, 1:20,000) respectively. Image was developed using FeQ™ ECL Substrate Kit (Cat#226).