

Anti-eIF3A Recombinant Rabbit Monoclonal Antibody



Catalog #: 9323

Aliases

Eukaryotic Translation Initiation Factor 3 Subunit A; EIF3-Theta; EIF3-P170; KIAA0139; EIF3S10; TIF32; Eukaryotic Translation Initiation Factor 3, Subunit 10 Theta, 150/170kDa; Eukaryotic Translation Initiation Factor 3 Subunit 10; EIF-3-Theta; EIF3 P167; EIF3 P180; EIF3 P185; EIF3; Eukaryotic Translation Initiation Factor 3, Subunit 10 (Theta, 150/170kD); Eukaryotic Translation Initiation Factor 3, Subunit 10 (Theta, 170kD); Eukaryotic Translation Initiation Factor 3, Subunit 10, 170kD; Eukaryotic Translation Initiation Factor 3, Subunit A; Cytoplasmic Protein P167; Centrosomin Homolog; EIF3, P180 Subunit; EIF3a; P167; P180; P185

Background

Gene Name: EIF3A

NCBI Gene Entry: [8661](#)

UniProt Entry: [Q14152](#)

Application Information

Molecular Weight: Predicted, 167 kDa; observed, 160 kDa

Clonality: Rabbit monoclonal antibody

Clone ID: 23GB830

Species Reactivity: Human, mouse, rat

Applications Tested: Western blotting (WB), flow cytometry (FCM), immunocytochemistry (IC)

Immunogen

A synthesized peptide derived from human eIF3A

Isotype

Rabbit IgG

Storage Buffer

Supplied in PBS (pH 7.4) containing 50% glycerol, and 0.02% sodium azide.

Storage

Store at -20 °C for one year.

Recommended Dilutions

Western Blotting (WB): 1:1,000-1:5,000

Flow Cytometry (FCM): 1:2,000

SUPPORT

SUPPORT@GENUINBIOTECH.COM
TEL: +1-540-855-7041

ORDERS

SALES@GENUINBIOTECH.COM
FAX: +1-540-855-7041

WWW.GENUINBIOTECH.COM

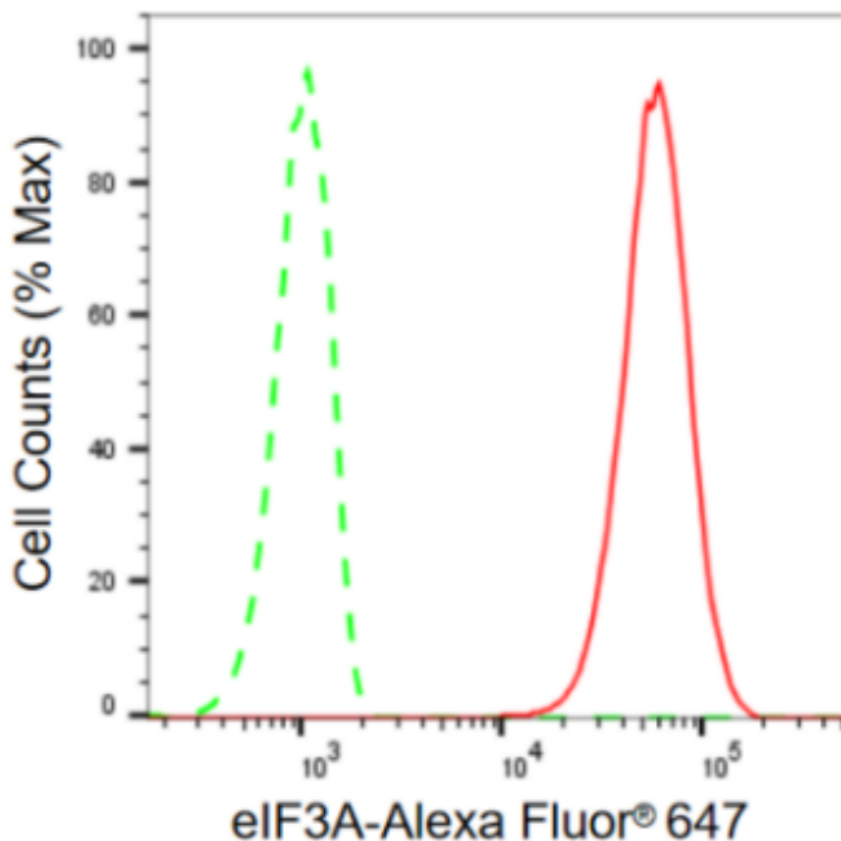
Anti-eIF3A Recombinant Rabbit Monoclonal Antibody

PAGE 2

Immunocytochemistry (IC): 1:100-1:1,000

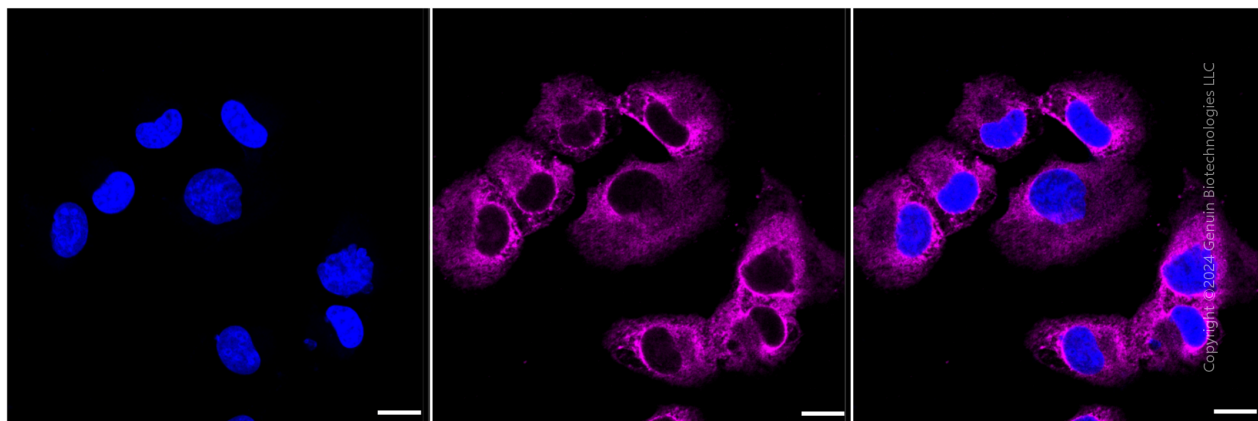
Note: This product is for research use only.

Validation Data



Copyright ©2024 Genuin Biotechnologies LLC

Flow cytometric analysis of eIF3A expression in HT-1080 cells using eIF3A antibody (Cat#9323, 1:2,000). Green, isotype control; red, eIF3A.



Copyright ©2024 Genuin Biotechnologies LLC

Immunocytochemical staining of HT-1080 cells with eIF3A antibody (Cat#9323, 1:1,000). Nuclei

SUPPORT

SUPPORT@GENUINBIOTECH.COM
TEL: +1-540-855-7041

ORDERS

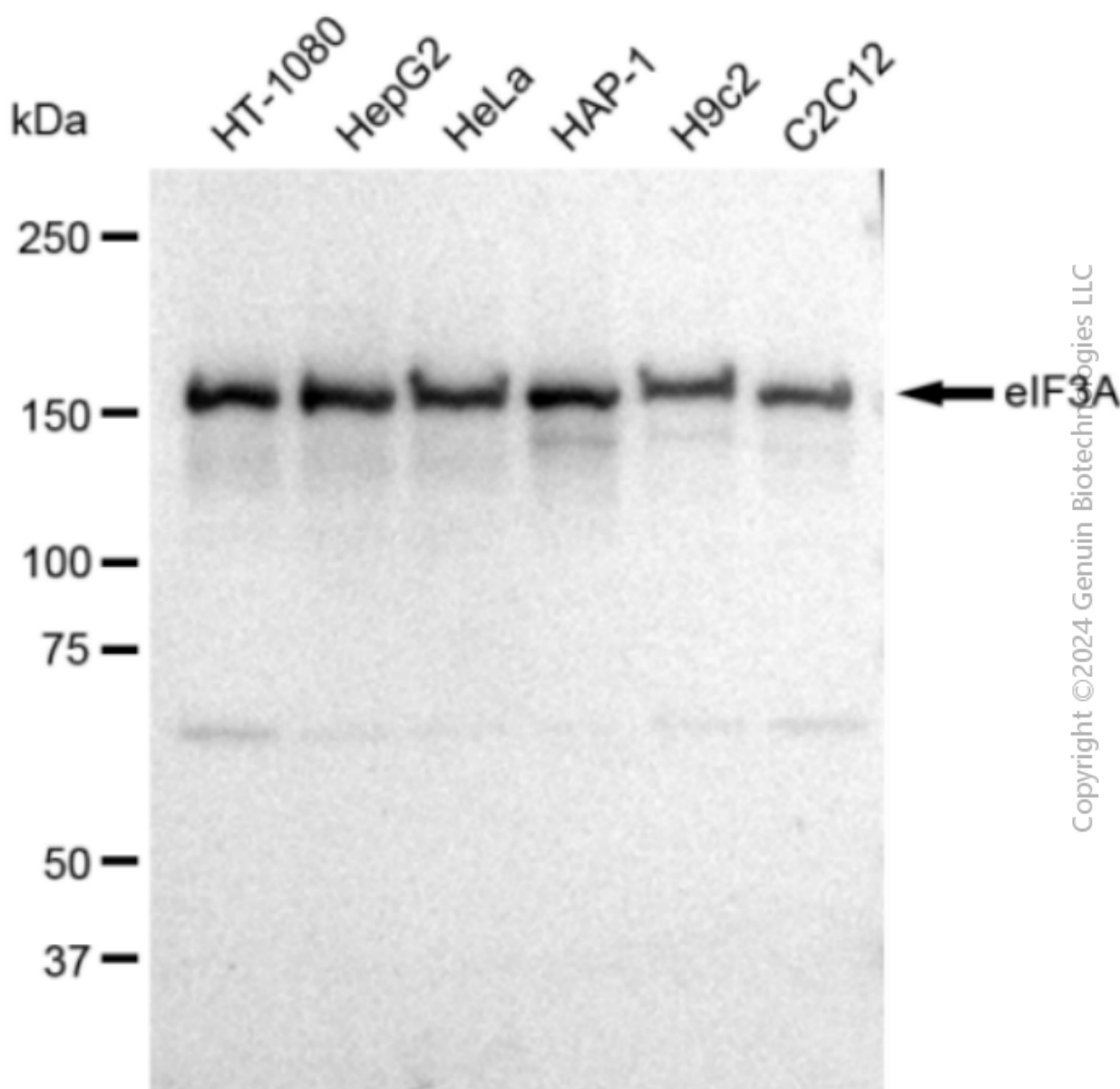
SALES@GENUINBIOTECH.COM
FAX: +1-540-855-7041

WWW.GENUINBIOTECH.COM

Anti-eIF3A Recombinant Rabbit Monoclonal Antibody

PAGE 3

were stained blue with DAPI; eIF3A was stained magenta with Alexa Fluor® 647. Images were taken using Leica stellaris 5. Protein abundance based on laser Intensity and smart gain: Medium. Scale bar: 20 μ m.



Western blotting analysis using anti-eIF3A antibody (Cat#9323). Total cell lysates (30 μ g) from various cell lines were loaded and separated by SDS-PAGE. The blot was incubated with anti-eIF3A antibody (Cat#9323, 1:5,000) and HRP-conjugated goat anti-rabbit secondary antibody (Cat#201, 1:20,000) respectively. Image was developed using FeQ™ ECL Substrate Kit (Cat#226).

SUPPORT

SUPPORT@GENUINBIOTECH.COM
TEL: +1-540-855-7041

ORDERS

SALES@GENUINBIOTECH.COM
FAX: +1-540-855-7041

WWW.GENUINBIOTECH.COM