

Anti-AGTR1 Recombinant Rabbit Monoclonal Antibody



Catalog #: 9371

Aliases

AGTR1; Angiotensin II Receptor Type 1; AT2R1; AGTR1A; AT2R1B; AGTR1B; HAT1R; AG2S; AT1B; AT1; Type-1 Angiotensin II Receptor; AT1 Receptor; AT2R1A; AT1AR; AT1BR; ATR1; Type-1B Angiotensin II Receptor; Angiotensin II Type 1 Receptor; Angiotensin II Type-1 Receptor; Angiotensin Receptor 1B; AT1R

Background

Gene Name: AGTR1

NCBI Gene Entry: [185](#)

UniProt Entry: [P30556](#)

Application Information

Molecular Weight: Predicted, 41 kDa; observed, 41 kDa

Clonality: Rabbit monoclonal antibody

Clone ID: 23GB635

Species Reactivity: Human

Applications Tested: Western blotting (WB), flow cytometry (FCM), immunocytochemistry (IC)

Immunogen

A synthesized peptide derived from human AGTR1

Isotype

Rabbit IgG

Storage Buffer

Supplied in PBS (pH 7.4) containing 50% glycerol, and 0.02% sodium azide.

Storage

Store at -20 °C for one year.

Recommended Dilutions

Western Blotting (WB): 1:1,000-1:5,000

Flow Cytometry (FCM): 1:2,000

Immunocytochemistry (IC): 1:100-1:1,000

SUPPORT

SUPPORT@GENUINBIOTECH.COM
TEL: +1-540-855-7041

ORDERS

SALES@GENUINBIOTECH.COM
FAX: +1-540-855-7041

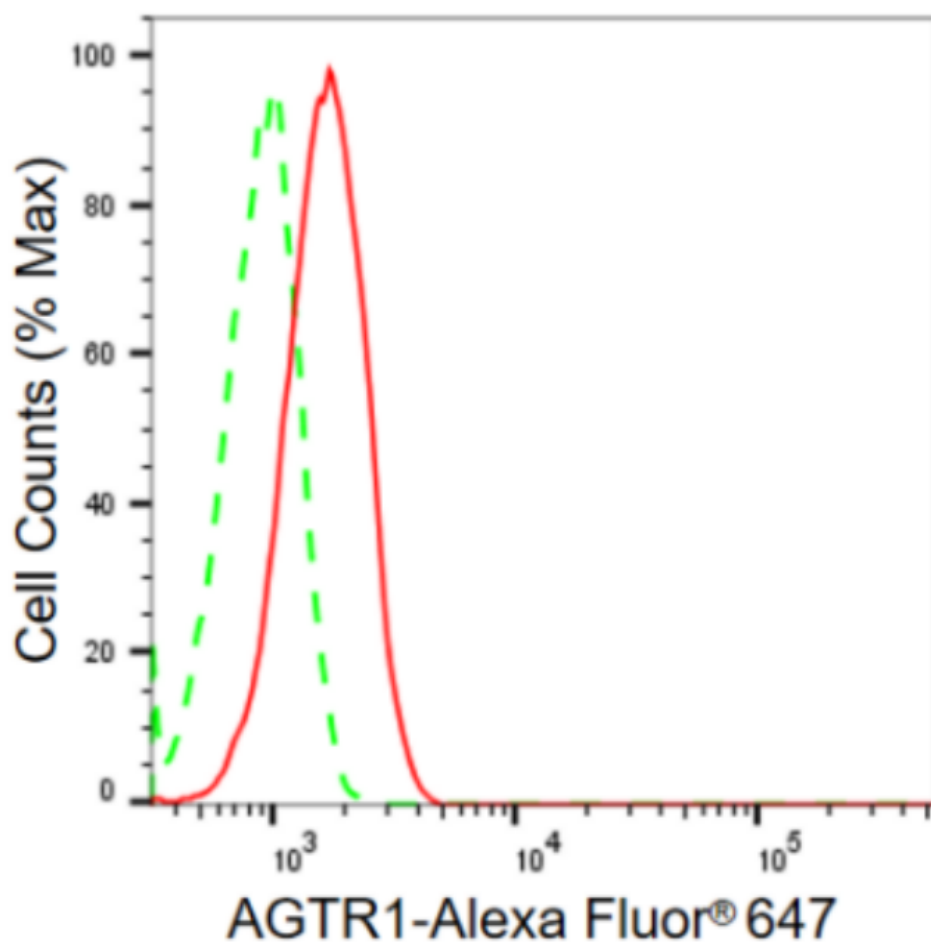
WWW.GENUINBIOTECH.COM

Anti-AGTR1 Recombinant Rabbit Monoclonal Antibody

PAGE 2

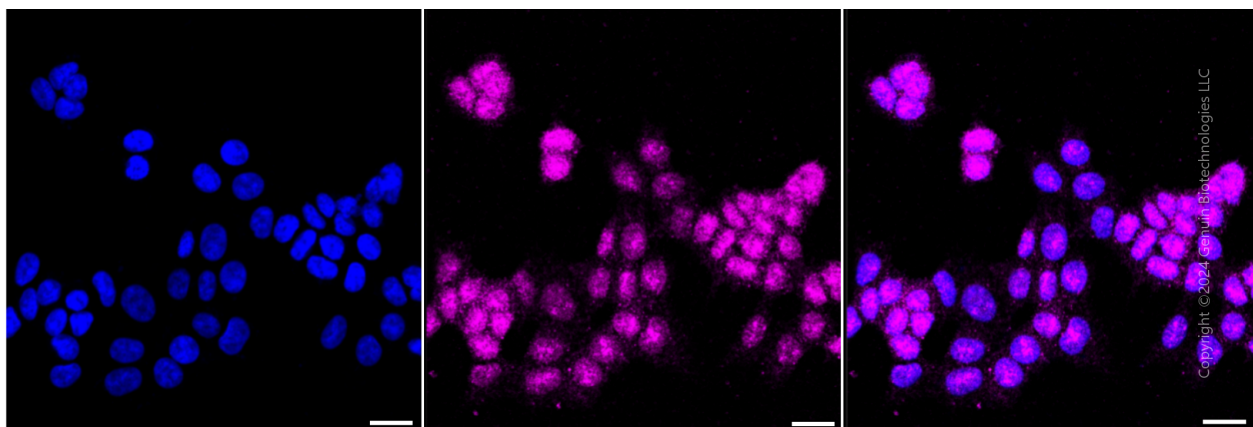
Note: This product is for research use only.

Validation Data



Copyright ©2024 Genuin Biotechnologies LLC

Flow cytometric analysis of AGTR1 in HAP-1 cells using AGTR1 antibody (Cat#9371, 1:2,000). Green, isotype control; red, AGTR1.



Copyright ©2024 Genuin Biotechnologies LLC

SUPPORT

SUPPORT@GENUINBIOTECH.COM
TEL: +1-540-855-7041

ORDERS

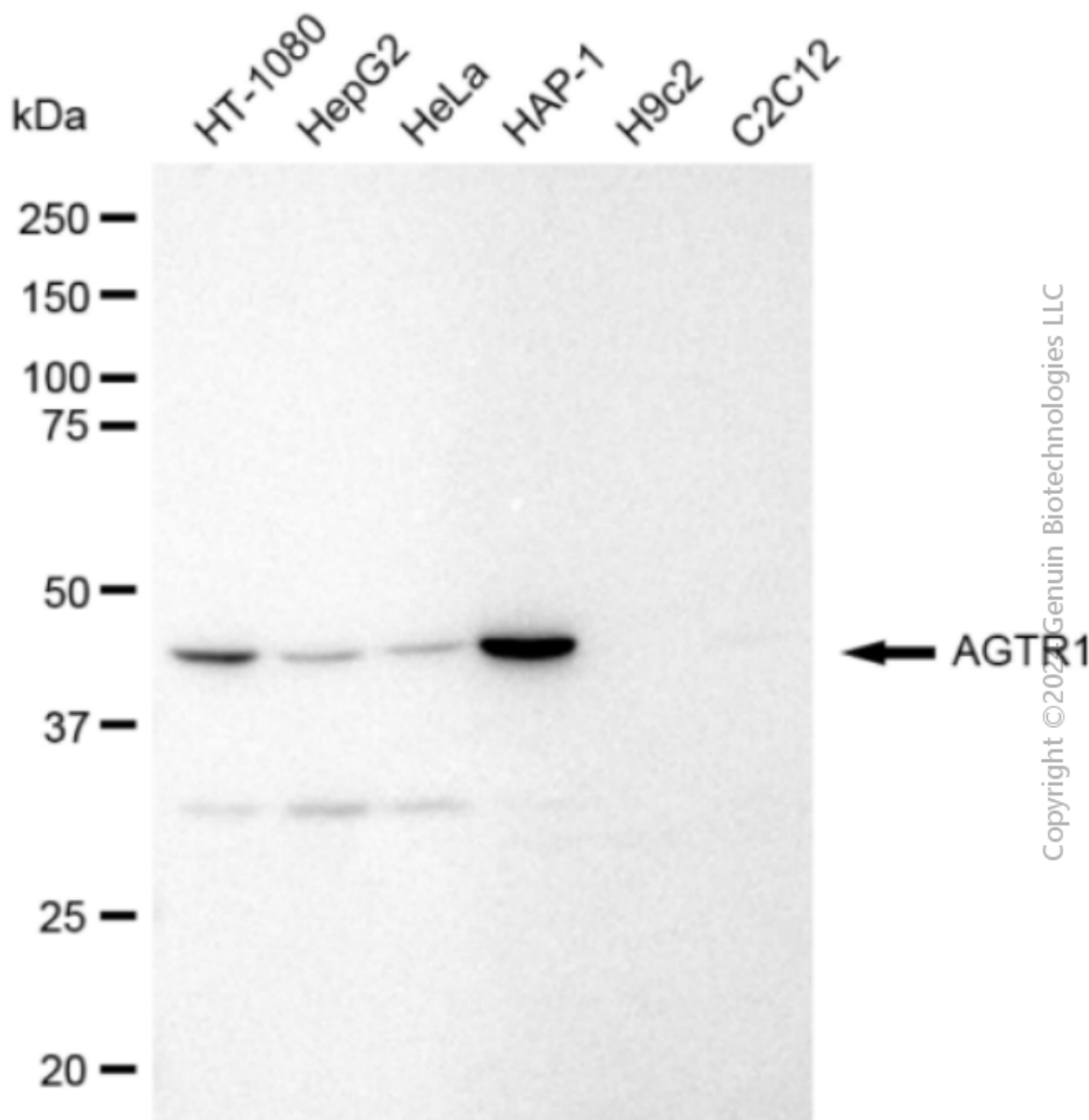
SALES@GENUINBIOTECH.COM
FAX: +1-540-855-7041

WWW.GENUINBIOTECH.COM

Anti-AGTR1 Recombinant Rabbit Monoclonal Antibody

PAGE 3

Immunocytochemical staining of HAP-1 cells with AGTR1 antibody (Cat#9371, 1:1,000). Nuclei were stained blue with DAPI; AGTR1 was stained magenta with Alexa Fluor® 647. Images were taken using Leica stellaris 5. Protein abundance based on laser Intensity and smart gain: Medium. Scale bar: 20 μ m.



Western blotting analysis using anti-AGTR1 antibody (Cat#9371). Total cell lysates (30 μ g) from various cell lines were loaded and separated by SDS-PAGE. The blot was incubated with anti-AGTR1 antibody (Cat#9371, 1:5,000) and HRP-conjugated goat anti-rabbit secondary antibody (Cat#201, 1:50,000) respectively. Image was developed using FeQ™ ECL Substrate Kit (Cat#226).

SUPPORT

SUPPORT@GENUINBIOTECH.COM
TEL: +1-540-855-7041

ORDERS

SALES@GENUINBIOTECH.COM
FAX: +1-540-855-7041

WWW.GENUINBIOTECH.COM