

Anti-ALKBH1 Recombinant Rabbit Monoclonal Antibody



Catalog #: 9441

Aliases

AlkB Homolog 1, Histone H2A Dioxygenase; ABH; ALKBH; HABH; Alpha-Ketoglutarate-Dependent Dioxygenase ABH1; Alkylated DNA Repair Protein AlkB Homolog; DNA N6-Methyl Adenine Demethylase ALKBH1; MRNA N(3)-Methylcytidine Demethylase; DNA Oxidative Demethylase ALKBH1; Nucleic Acid Dioxygenase ALKBH1; DNA 6mA Demethylase; DNA Lyase ABH1; AlkB; ABH1; AlkB, Alkylation Repair Homolog 1 (E. Coli); AlkB, Alkylation Repair Homolog (E. Coli); TRNA N1-Methyl Adenine Demethylase; AlkB, Alkylation Repair Homolog; Alkylation Repair, AlkB Homolog; DNA Demethylase ALKBH1; EC 1.14.11.51; EC 1.14.11.33; EC 1.14.11.-; EC 4.2.99.18; ALKB

Background

Gene Name: ALKBH1

NCBI Gene Entry: [8846](#)

UniProt Entry: [Q13686](#)

Application Information

Molecular Weight: Predicted, 44 kDa; observed, 43 kDa

Clonality: Rabbit monoclonal antibody

Clone ID: 23GB1265

Species Reactivity: Human

Applications Tested: Western blotting (WB), flow cytometry (FCM), immunocytochemistry (IC)

Immunogen

A synthesized peptide derived from human ALKBH1

Isotype

Rabbit IgG

Storage Buffer

Supplied in PBS (pH 7.4) containing 50% glycerol, and 0.02% sodium azide.

Storage

Store at -20 °C for one year.

Recommended Dilutions

Western Blotting (WB): 1:1,000-1:5,000

SUPPORT

SUPPORT@GENUINBIOTECH.COM
TEL: +1-540-855-7041

ORDERS

SALES@GENUINBIOTECH.COM
FAX: +1-540-855-7041

WWW.GENUINBIOTECH.COM

Anti-ALKBH1 Recombinant Rabbit Monoclonal Antibody

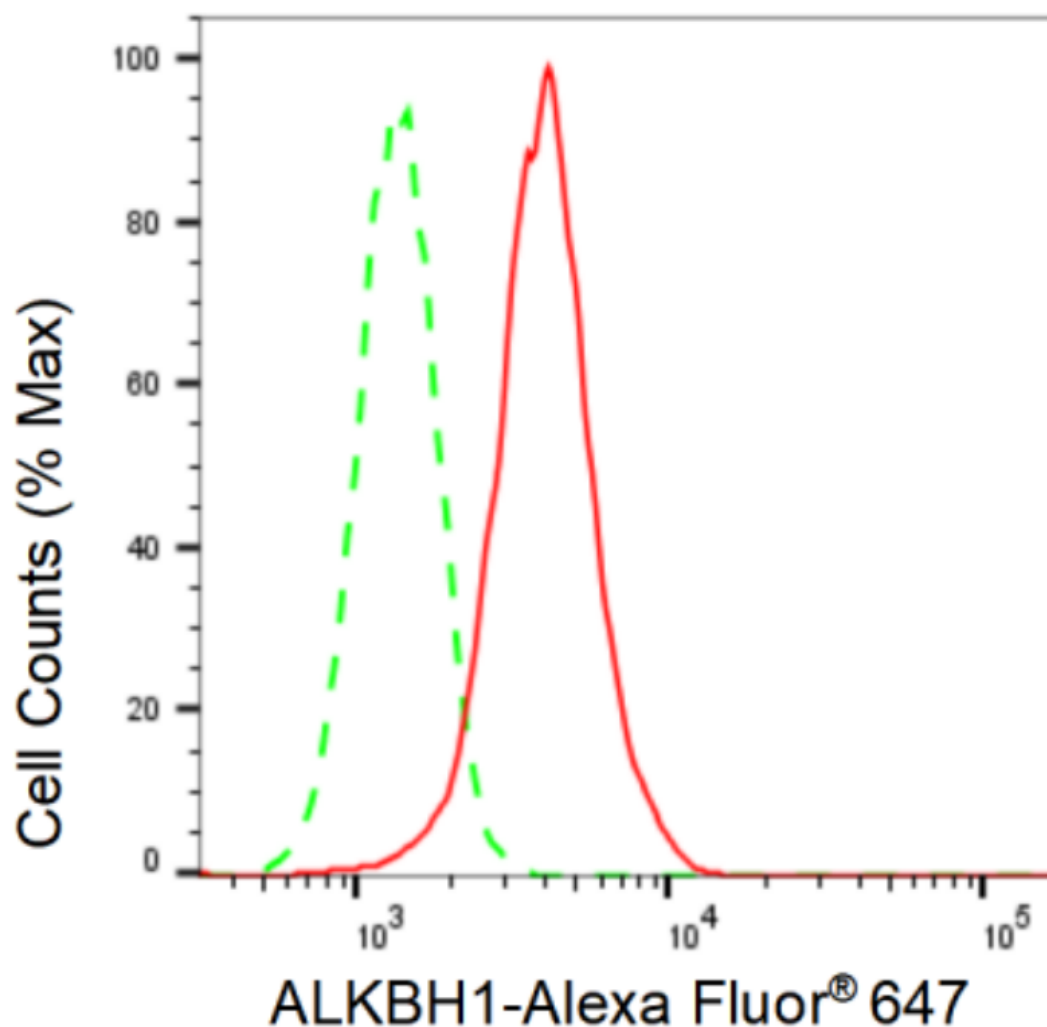
PAGE 2

Flow Cytometry (FCM): 1:2,000

Immunocytochemistry (IC): 1:100-1:1,000

Note: This product is for research use only.

Validation Data



Copyright ©2024 Genuin Biotechnologies LLC

Flow cytometric analysis of ALKBH1 expression in HepG2 cells using ALKBH1 antibody (Cat#9441, 1:2,000). Green, isotype control; red, ALKBH1.

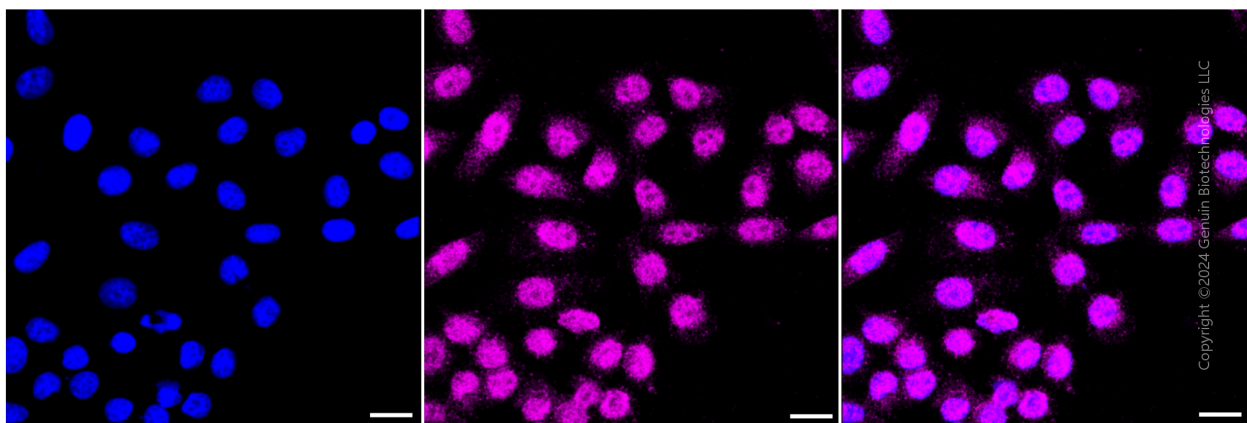
SUPPORT

SUPPORT@GENUINBIOTECH.COM
TEL: +1-540-855-7041

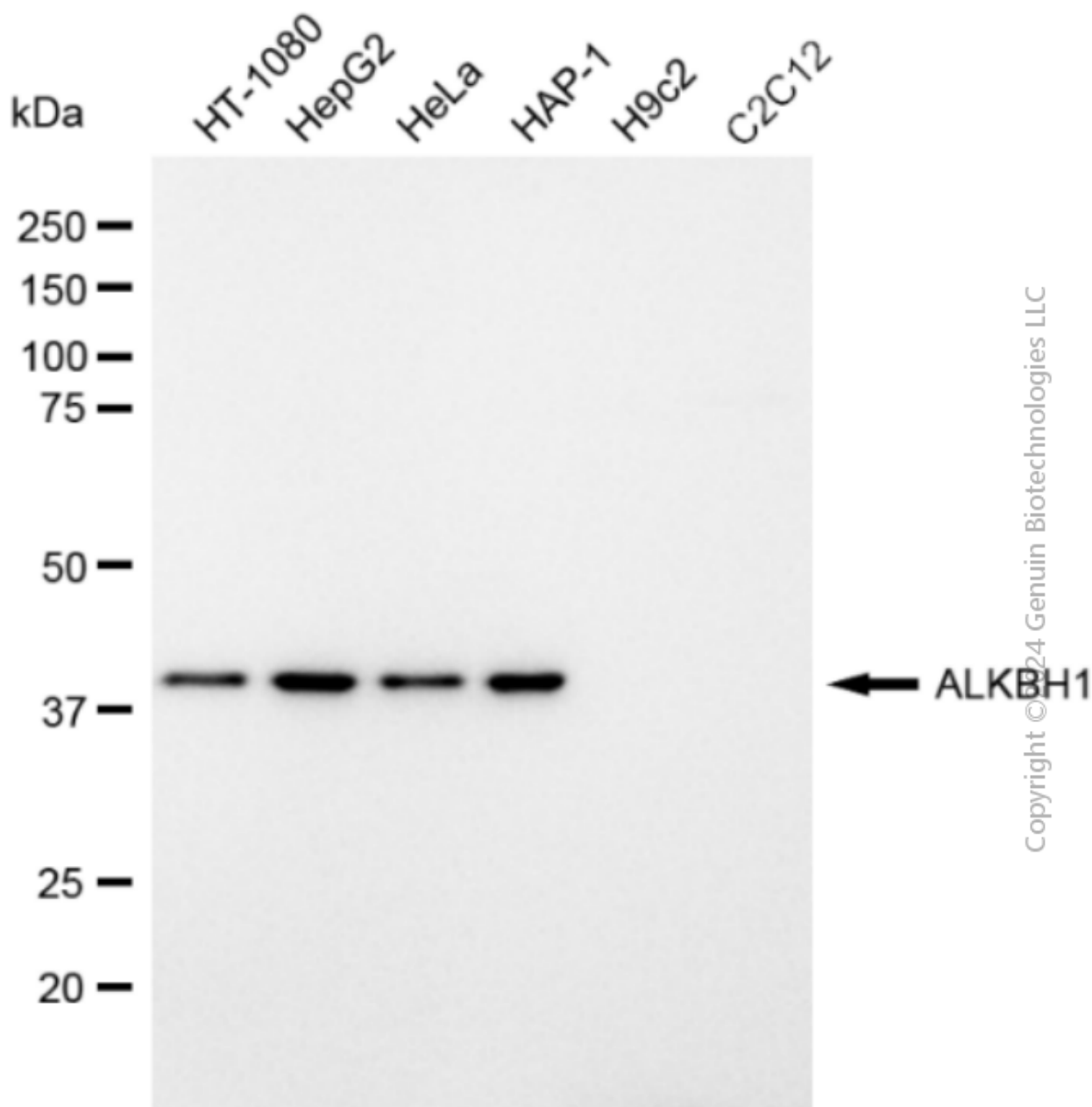
ORDERS

SALES@GENUINBIOTECH.COM
FAX: +1-540-855-7041

WWW.GENUINBIOTECH.COM



Immunocytochemical staining of HepG2 cells with ALKBH1 antibody (Cat#9441, 1:1,000). Nuclei were stained blue with DAPI; ALKBH1 was stained magenta with Alexa Fluor® 647. Images were taken using Leica stellaris 5. Protein abundance based on laser Intensity and smart gain: Medium. Scale bar: 20 μ m.



Western blotting analysis using anti-ALKBH1 antibody (Cat#9441). Total cell lysates (30 µg) from various cell lines were loaded and separated by SDS-PAGE. The blot was incubated with anti-ALKBH1 antibody (Cat#9441, 1:5,000) and HRP-conjugated goat anti-rabbit secondary antibody (Cat#201, 1:20,000) respectively. Image was developed using FeQ™ ECL Substrate Kit (Cat#226).