

# Human CHUK Knockdown Cell Line (WB-Validated)



**Catalog #: C1374**

## Aliases

CHUK; Component Of Inhibitor Of Nuclear Factor Kappa B Kinase Complex; IKK-Alpha; NFKB1A; IKK1; IKKA; Inhibitor Of Nuclear Factor Kappa-B Kinase Subunit Alpha; Conserved Helix-Loop-Helix Ubiquitous Kinase; IkbKA; TCF16; Transcription Factor 16; I-Kappa-B Kinase 1; EC 2.7.11.10; IKK-1; Nuclear Factor NF-Kappa-B Inhibitor Kinase Alpha; Nuclear Factor NFKappaB Inhibitor Kinase Alpha; Ikb Kinase Alpha Subunit; I-Kappa-B Kinase-Alpha; I-Kappa-B Kinase Alpha; I-Kappa-B Kinase; IkappaB Kinase; IKK-A Kinase; EC 2.7.11; TCF-16; IKBKA; IKK-A; BPS2

## Background

Gene Name: CHUK

NCBI Gene Entry: [1147](#)

## Storage

Store at liquid nitrogen for 1 year.

## Kit Components

1. Human CHUK Knockdown Cell Line (Wb-Validated)
2. Wild-type cell line

## Parental Cell Line

Human cell line supplied by the client

## Validation Methods

RT-qPCR, Western blotting (WB)

## Shipping

Shipped on Dry Ice.

## Instructions For Use

This knockdown cell line should be paired with wild-type cell line for use.

**Note:** This product is for research use only.

## Validation Data

---

### SUPPORT

SUPPORT@GENUINBIOTECH.COM  
TEL: +1-540-855-7041

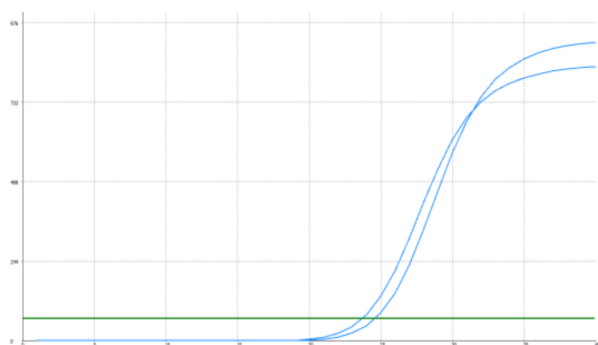
### ORDERS

SALES@GENUINBIOTECH.COM  
FAX: +1-540-855-7041

[WWW.GENUINBIOTECH.COM](http://WWW.GENUINBIOTECH.COM)

## Human CHUK Knockdown Cell Line (WB-Validated)

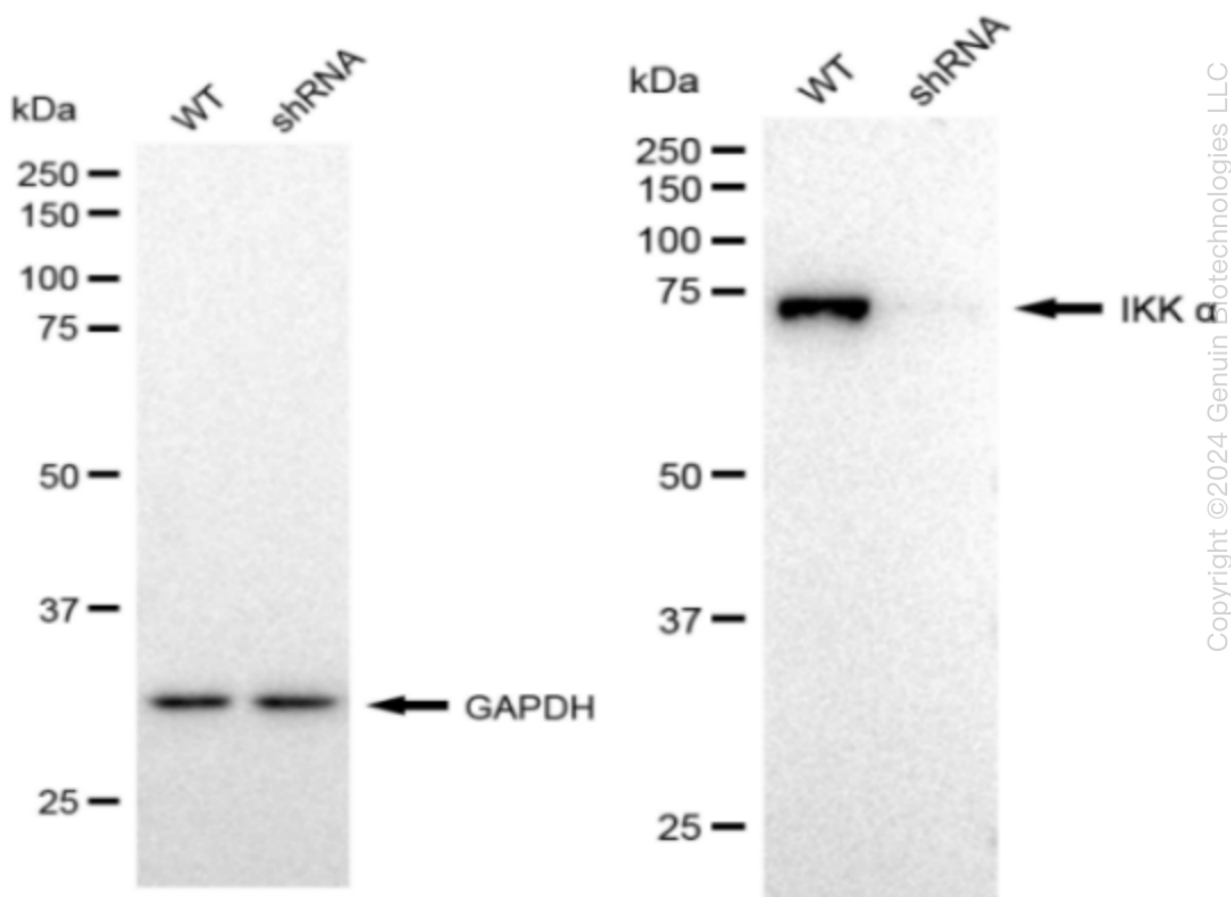
PAGE 2



Genotype	Ct Value
Wild-Type	23.46
Knock-Down	24.49
$\Delta Ct (Ct_{KD} - Ct_{WT})$	1.03
% mRNA Reduction	↓ 51%

Copyright ©2024 Genuin Biotechnologies LLC

RT-qPCR analysis. HeLa cells were infected with CHUK-specific shRNA lentiviral particles, total RNA was extracted from wild-type and knockdown cells, RT-qPCR was performed using gene-specific primers.  $\Delta Ct (Ct_{KD} - Ct_{WT})$  was used to calculate mRNA reduction (%) between wild-type and knockdown cells using the following formula:  $(1 - 1/2^{\Delta Ct}) \times 100\%$ .



Copyright ©2024 Genuin Biotechnologies LLC

Western blotting analysis. CHUK protein expression in wild-type (WT) and shRNA knockdown (KD) HeLa cells was detected using Western blotting.  $\beta$ -Tubulin served as a loading control. The blots were incubated with primary antibodies (Cat#61374, 1:5,000) against CHUK and  $\beta$ -Tubulin,

### SUPPORT

SUPPORT@GENUINBIOTECH.COM  
TEL: +1-540-855-7041

### ORDERS

SALES@GENUINBIOTECH.COM  
FAX: +1-540-855-7041

[WWW.GENUINBIOTECH.COM](http://WWW.GENUINBIOTECH.COM)

## **Human CHUK Knockdown Cell Line (WB-Validated)**

PAGE 3

respectively, followed by incubating with HRP-conjugated goat anti-rabbit secondary antibody (Cat#201, 1:20,000). Images were developed using FeQ™ ECL Substrate Kit (Cat#226).

---

### **SUPPORT**

SUPPORT@GENUINBIOTECH.COM  
TEL: +1-540-855-7041

### **ORDERS**

SALES@GENUINBIOTECH.COM  
FAX: +1-540-855-7041

**WWW.GENUINBIOTECH.COM**