

Human COX4I1 Knockdown Cell Line (WB-Validated)



Catalog #: C1581

Aliases

COX4I1; Cytochrome C Oxidase Subunit 4I1; COXIV-1; COX4-1; COXIV; COX4; Cytochrome C Oxidase Subunit 4 Isoform 1, Mitochondrial; Cytochrome C Oxidase Subunit IV Isoform 1; Cytochrome C Oxidase Polypeptide IV; Cytochrome C Oxidase Subunit IV; COX IV-1; MC4DN16

Background

Gene Name: COX4I1

NCBI Gene Entry: [1327](#)

Storage

Store at liquid nitrogen for 1 year.

Kit Components

1. Human COX4I1 Knockdown Cell Line (Wb-Validated)
2. Wild-type cell line

Parental Cell Line

Human cell line supplied by the client

Validation Methods

RT-qPCR, Western blotting (WB)

Shipping

Shipped on Dry Ice.

Instructions For Use

This knockdown cell line should be paired with wild-type cell line for use.

Note: This product is for research use only.

Validation Data

SUPPORT

SUPPORT@GENUINBIOTECH.COM
TEL: +1-540-855-7041

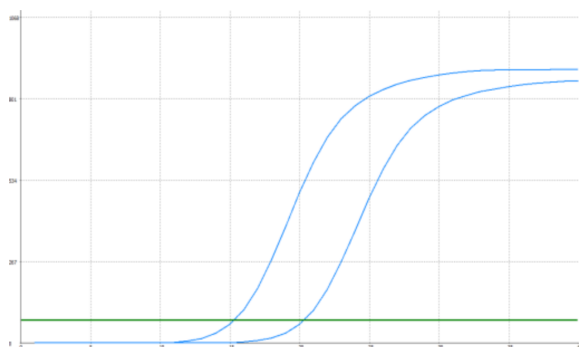
ORDERS

SALES@GENUINBIOTECH.COM
FAX: +1-540-855-7041

WWW.GENUINBIOTECH.COM

Human COX4I1 Knockdown Cell Line (WB-Validated)

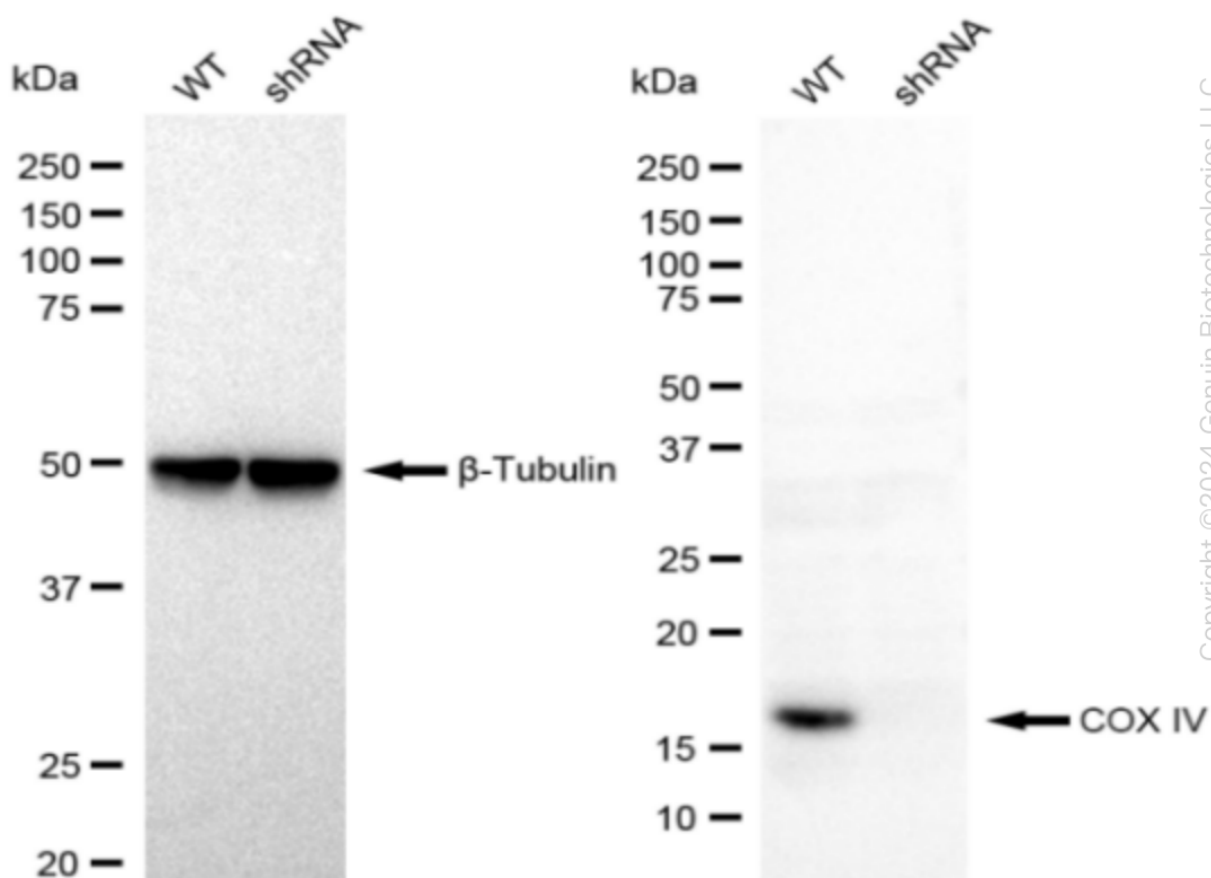
PAGE 2



Genotype	Ct Value
Wild-Type	15.06
Knock-Down	19.97
$\Delta Ct (Ct_{KD} - Ct_{WT})$	4.91
% mRNA Reduction	↓ 97%

Copyright ©2024 Genuin Biotechnologies LLC

RT-qPCR analysis. HT-1080 cells were infected with COX4I1-specific shRNA lentiviral particles, total RNA was extracted from wild-type and knockdown cells, RT-qPCR was performed using gene-specific primers. $\Delta Ct (Ct_{KD} - Ct_{WT})$ was used to calculate mRNA reduction (%) between wild-type and knockdown cells using the following formula: $(1 - 1/2^{\Delta Ct}) \times 100\%$.



Copyright ©2024 Genuin Biotechnologies LLC

Western blotting analysis. COX4I1 protein expression in wild-type (WT) and shRNA knockdown (KD) HT-1080 cells was detected using Western blotting. β -Tubulin served as a loading control.

SUPPORT

SUPPORT@GENUINBIOTECH.COM
TEL: +1-540-855-7041

ORDERS

SALES@GENUINBIOTECH.COM
FAX: +1-540-855-7041

WWW.GENUINBIOTECH.COM

Human COX4I1 Knockdown Cell Line (WB-Validated)

PAGE 3

The blots were incubated with primary antibodies (Cat#61431, 1:5,000) against COX4I1 and β -Tubulin, respectively, followed by incubating with HRP-conjugated goat anti-rabbit secondary antibody (Cat#201, 1:20,000). Images were developed using FeQ™ ECL Substrate Kit (Cat#226).

SUPPORT

SUPPORT@GENUINBIOTECH.COM
TEL: +1-540-855-7041

ORDERS

SALES@GENUINBIOTECH.COM
FAX: +1-540-855-7041

WWW.GENUINBIOTECH.COM