

# Human ARG2 Knockdown Cell Line (WB-Validated)



**Catalog #: C1632**

## Aliases

ARG2; Arginase 2; Arginase-2, Mitochondrial; Kidney-Type Arginase; Non-Hepatic Arginase; Arginase, Type II; Type II Arginase; Arginase II; EC 3.5.3.1; L-Arginine Amidinohydrolase; L-Arginine Ureahydrolase; Nonhepatic Arginase; Kidney Arginase; EC 3.5.3

## Background

Gene Name: ARG2

NCBI Gene Entry: [384](#)

## Storage

Store at liquid nitrogen for 1 year.

## Kit Components

1. Human ARG2 Knockdown Cell Line (Wb-Validated)
2. Wild-type cell line

## Parental Cell Line

Human cell line supplied by the client

## Validation Methods

RT-qPCR, Western blotting (WB)

## Shipping

Shipped on Dry Ice.

## Instructions For Use

This knockdown cell line should be paired with wild-type cell line for use.

**Note:** This product is for research use only.

## Validation Data

---

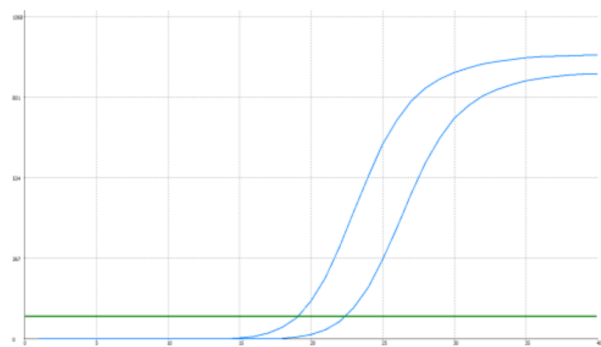
### SUPPORT

SUPPORT@GENUINBIOTECH.COM  
TEL: +1-540-855-7041

### ORDERS

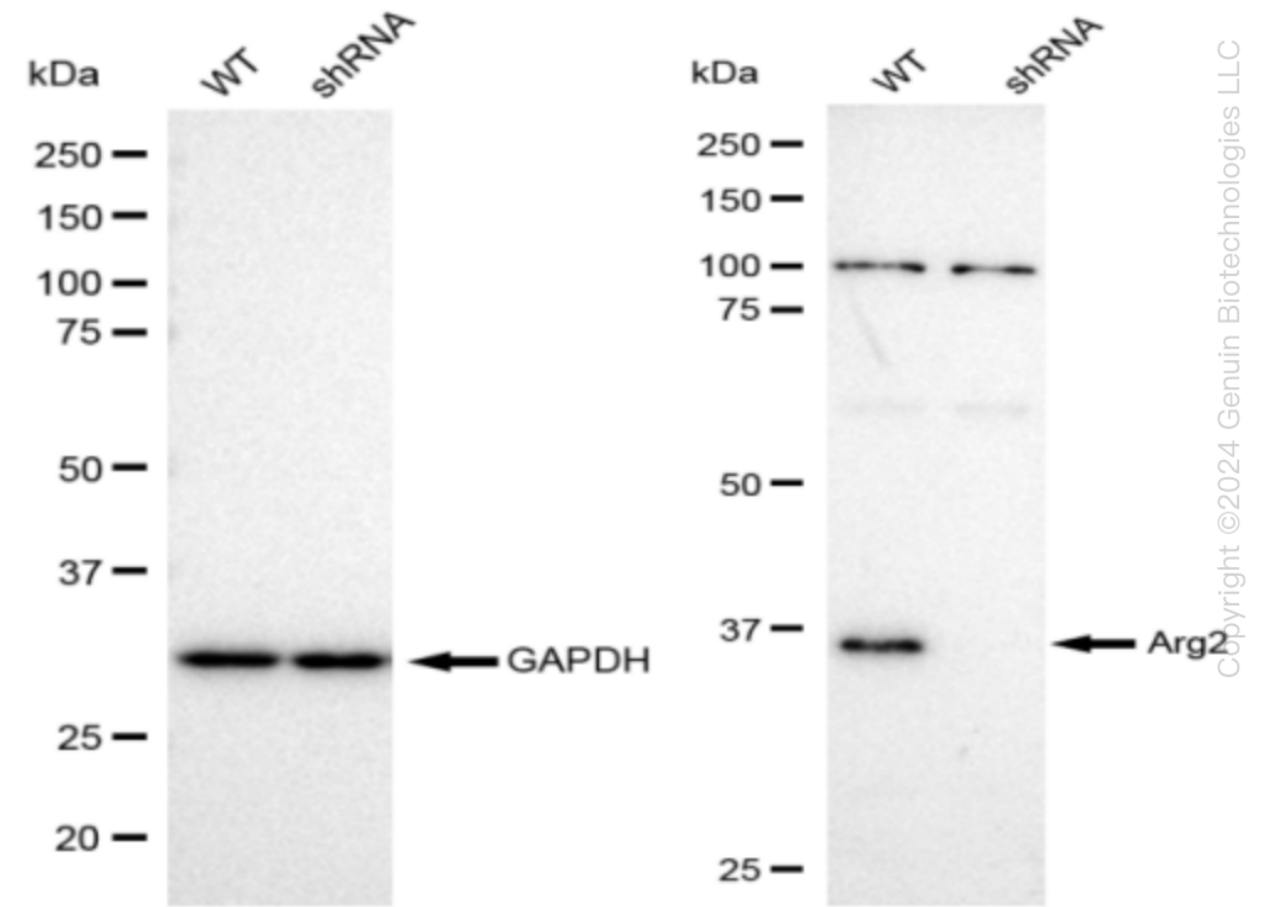
SALES@GENUINBIOTECH.COM  
FAX: +1-540-855-7041

[WWW.GENUINBIOTECH.COM](http://WWW.GENUINBIOTECH.COM)



Genotype	Ct Value
Wild-Type	18.86
Knock-Down	22.09
$\Delta$ Ct (Ct <sub>KD</sub> -Ct <sub>WT</sub> )	3.23
% mRNA Reduction	↓ 89%

RT-qPCR analysis. HT-1080 cells were infected with ARG2-specific shRNA lentiviral particles, total RNA was extracted from wild-type and knockdown cells, RT-qPCR was performed using gene-specific primers.  $\Delta$ Ct (Ct<sub>KD</sub>-Ct<sub>WT</sub>) was used to calculate mRNA reduction (%) between wild-type and knockdown cells using the following formula:  $(1-1/2^{\Delta\text{Ct}}) \times 100\%$ .



Western blotting analysis. ARG2 protein expression in wild-type (WT) and shRNA knockdown

## **Human ARG2 Knockdown Cell Line (WB-Validated)**

PAGE 3

(KD) HT-1080 cells was detected using Western blotting. GAPDH served as a loading control. The blots were incubated with primary antibodies (Cat#69632, 1:10,000) against ARG2 and GAPDH, respectively, followed by incubating with HRP-conjugated goat anti-rabbit secondary antibody (Cat#201, 1:20,000). Images were developed using FeQ™ ECL Substrate Kit (Cat#226).

---

### **SUPPORT**

SUPPORT@GENUINBIOTECH.COM  
TEL: +1-540-855-7041

### **ORDERS**

SALES@GENUINBIOTECH.COM  
FAX: +1-540-855-7041

**WWW.GENUINBIOTECH.COM**