

Human LAMC1 Knockdown Cell Line (WB-Validated)



Catalog #: C2187

Aliases

LAMC1; Laminin Subunit Gamma 1; Laminin B2 Chain; LAMB2; Laminin, Gamma 1 (Formerly LAMB2); Laminin-10 Subunit Gamma; Laminin-11 Subunit Gamma; Laminin Subunit Gamma-1; S-Laminin Subunit Gamma; Laminin-2 Subunit Gamma; Laminin-3 Subunit Gamma; Laminin-4 Subunit Gamma; Laminin-6 Subunit Gamma; Laminin-7 Subunit Gamma; Laminin-8 Subunit Gamma; Laminin-9 Subunit Gamma; S-LAM Gamma; Laminin-1 Subunit Gamma

Background

Gene Name: LAMC1

NCBI Gene Entry: [3915](#)

Storage

Store at liquid nitrogen for 1 year.

Kit Components

1. Human LAMC1 Knockdown Cell Line (Wb-Validated)
2. Wild-type cell line

Parental Cell Line

Human cell line supplied by the client

Validation Methods

RT-qPCR, Western blotting (WB)

Shipping

Shipped on Dry Ice.

Instructions For Use

This knockdown cell line should be paired with wild-type cell line for use.

Note: This product is for research use only.

Validation Data

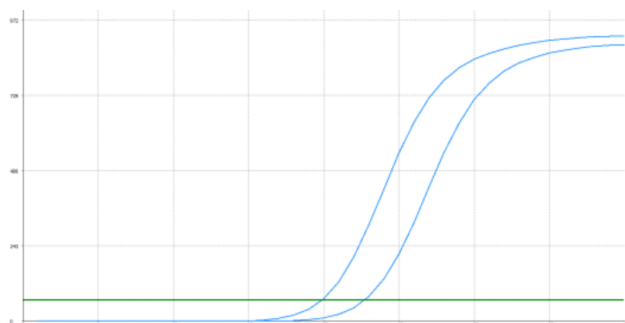
SUPPORT

SUPPORT@GENUINBIOTECH.COM
TEL: +1-540-855-7041

ORDERS

SALES@GENUINBIOTECH.COM
FAX: +1-540-855-7041

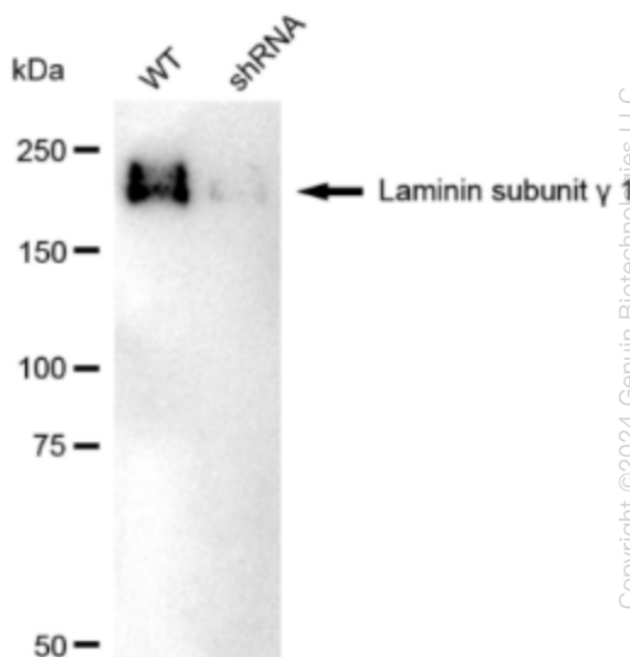
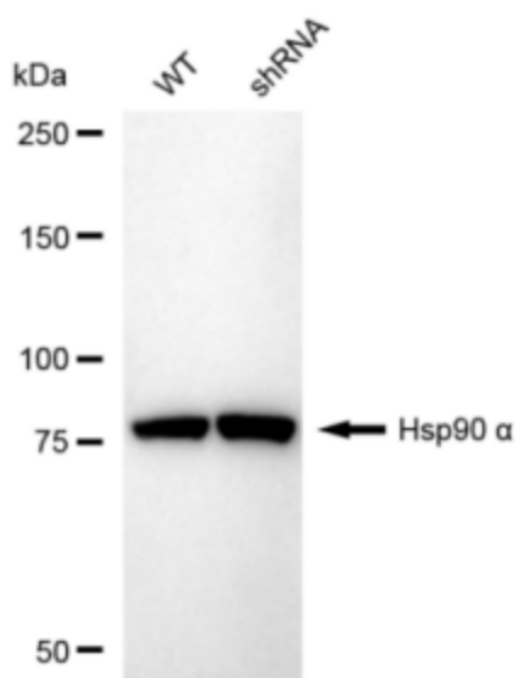
WWW.GENUINBIOTECH.COM



Genotype	Ct Value
Wild-Type	19.36
Knock-Down	21.22
$\Delta Ct (Ct_{KD} - Ct_{WT})$	1.86
% mRNA Reduction	↓ 72%

Copyright ©2024 Genuin Biotechnologies LLC

RT-qPCR analysis. HeLa cells were infected with LAMC1-specific shRNA lentiviral particles, total RNA was extracted from wild-type and knockdown cells, RT-qPCR was performed using gene-specific primers. $\Delta Ct (Ct_{KD} - Ct_{WT})$ was used to calculate mRNA reduction (%) between wild-type and knockdown cells using the following formula: $(1 - 1/2^{\Delta Ct}) \times 100\%$.



Copyright ©2024 Genuin Biotechnologies LLC

Western blotting analysis. LAMC1 protein expression in wild-type (WT) and shRNA knockdown (KD) HeLa cells was detected using Western blotting. Hsp90 α served as a loading control. The blots were incubated with primary antibodies against LAMC1 and Hsp90 α , respectively, followed by incubating with HRP-conjugated goat anti-rabbit secondary antibody. Images were developed using FeQ™ ECL Substrate Kit.