

Human FLOT1 Knockdown Cell Line (WB-Validated)



Catalog #: C2451

Aliases

FLOT1; Flotillin 1; flotillin-1; Integral Membrane Component Of Caveolae

Background

Gene Name: FLOT1

NCBI Gene Entry: [10211](#)

Storage

Store at liquid nitrogen for 1 year.

Kit Components

1. Human FLOT1 Knockdown Cell Line (Wb-Validated)
2. Wild-type cell line

Parental Cell Line

Human cell line supplied by the client

Validation Methods

RT-qPCR, Western blotting (WB)

Shipping

Shipped on Dry Ice.

Instructions For Use

This knockdown cell line should be paired with wild-type cell line for use.

Note: This product is for research use only.

Validation Data

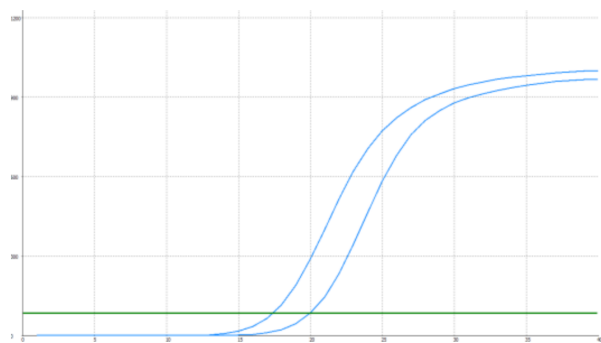
SUPPORT

SUPPORT@GENUINBIOTECH.COM
TEL: +1-540-855-7041

ORDERS

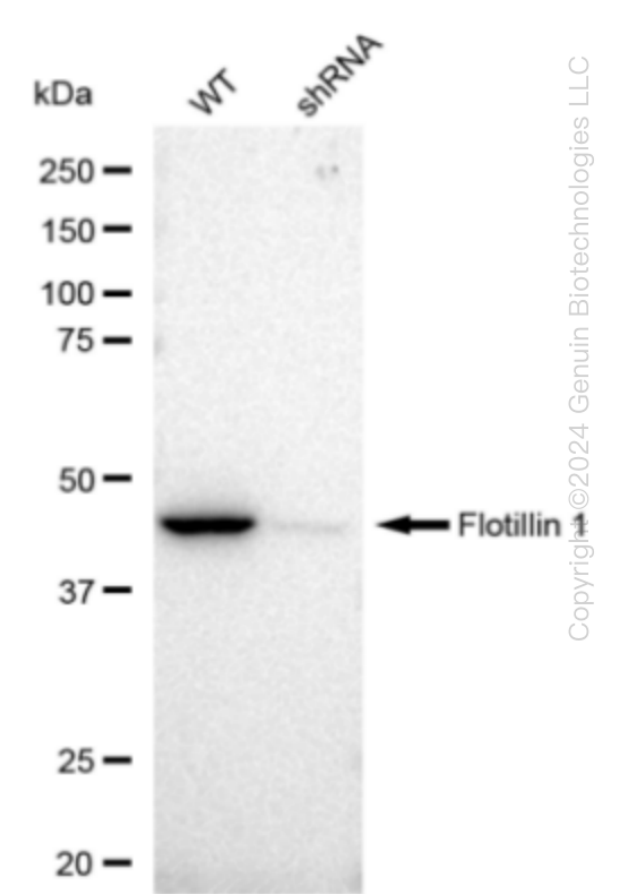
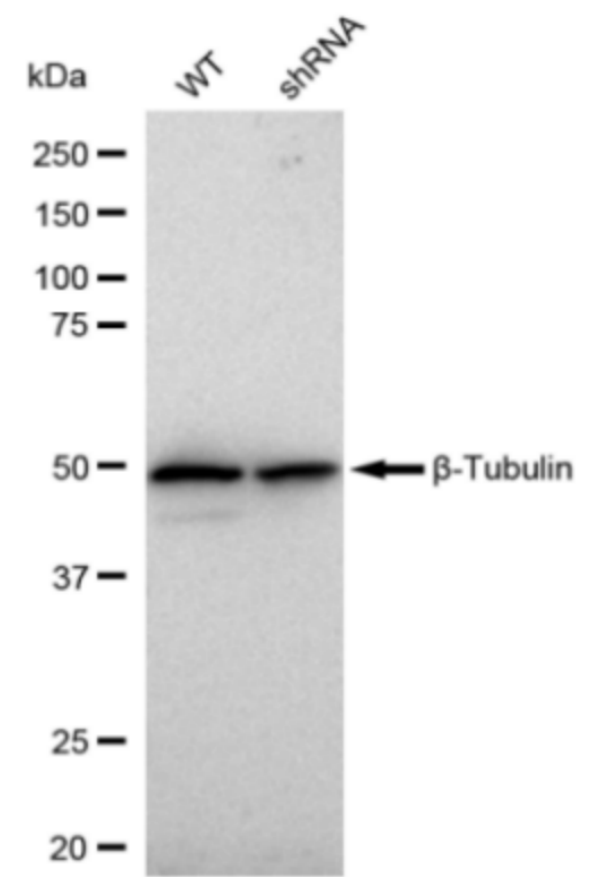
SALES@GENUINBIOTECH.COM
FAX: +1-540-855-7041

WWW.GENUINBIOTECH.COM



Genotype	Ct Value
Wild-Type	17.11
Knock-Down	19.61
$\Delta Ct (Ct_{KD}-Ct_{WT})$	2.5
% mRNA Reduction	<div><div></div>82%</div>

RT-qPCR analysis. HeLa cells were infected with FLOT1-specific shRNA lentiviral particles, total RNA was extracted from wild-type and knockdown cells, RT-qPCR was performed using gene-specific primers. $\Delta Ct (Ct_{KD}-Ct_{WT})$ was used to calculate mRNA reduction (%) between wild-type and knockdown cells using the following formula: $(1-1/2^{\Delta Ct}) \times 100\%$.



Western blotting analysis. FLOT1 protein expression in wild-type (WT) and shRNA knockdown

Human FLOT1 Knockdown Cell Line (WB-Validated)

PAGE 3

(KD) HeLa cells was detected using Western blotting. β -Tubulin served as a loading control. The blots were incubated with primary antibodies (Cat#68451, 1:10,000) against FLOT1 and β -Tubulin, respectively, followed by incubating with HRP-conjugated goat anti-rabbit secondary antibody (Cat#201, 1:20,000). Images were developed using FeQ™ ECL Substrate Kit (Cat#226).

SUPPORT

SUPPORT@GENUINBIOTECH.COM
TEL: +1-540-855-7041

ORDERS

SALES@GENUINBIOTECH.COM
FAX: +1-540-855-7041

WWW.GENUINBIOTECH.COM