

# Human DNAJC12 Knockdown Cell Line (WB-Validated)



**Catalog #: C2512**

## Aliases

DNAJC12; DnaJ Heat Shock Protein Family (Hsp40) Member C12; JDP1; DnaJ (Hsp40) Homolog, Subfamily C, Member 12; DnaJ Homolog Subfamily C Member 12; J Domain-Containing Protein; J Domain Protein; J Domain Containing Protein 1 (JDP1); HPANBH4

## Background

Gene Name: DNAJC12

NCBI Gene Entry: [56521](#)

## Storage

Store at liquid nitrogen for 1 year.

## Kit Components

1. Human DNAJC12 Knockdown Cell Line (Wb-Validated)
2. Wild-type cell line

## Parental Cell Line

Human cell line supplied by the client

## Validation Methods

RT-qPCR, Western blotting (WB)

## Shipping

Shipped on Dry Ice.

## Instructions For Use

This knockdown cell line should be paired with wild-type cell line for use.

**Note:** This product is for research use only.

## Validation Data

---

### SUPPORT

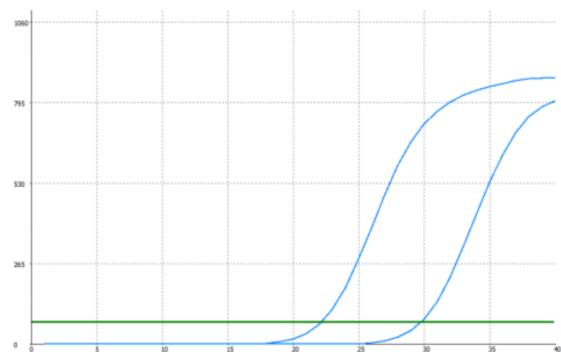
SUPPORT@GENUINBIOTECH.COM  
TEL: +1-540-855-7041

### ORDERS

SALES@GENUINBIOTECH.COM  
FAX: +1-540-855-7041

[WWW.GENUINBIOTECH.COM](http://WWW.GENUINBIOTECH.COM)

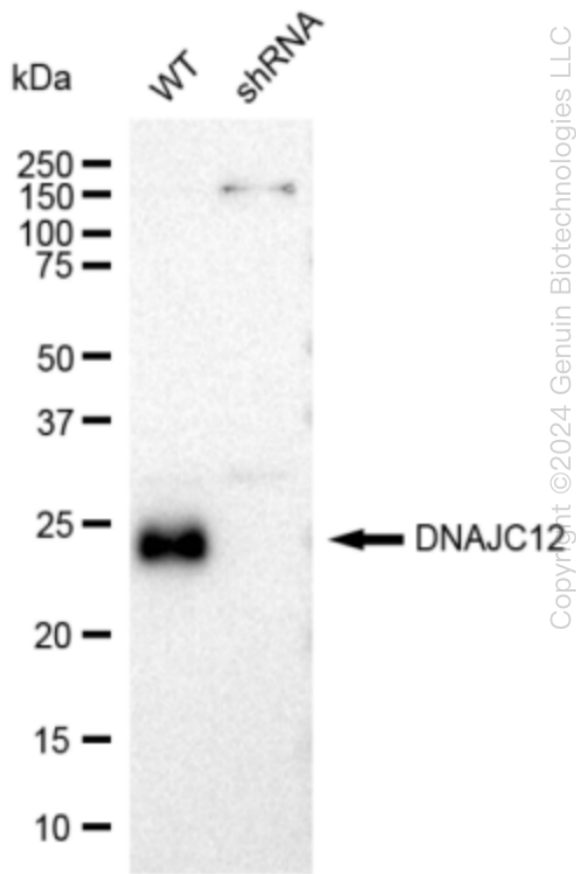
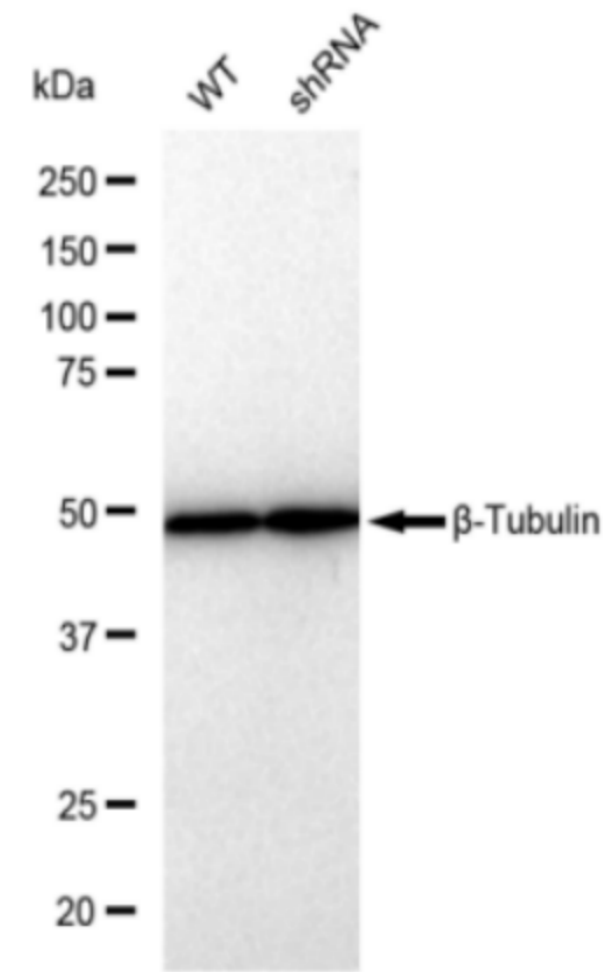
Human DNAJC12 Knockdown Cell Line (WB-Validated)



Genotype	Ct Value
Wild-Type	21.93
Knock-Down	29.32
$\Delta Ct (Ct_{KD}-Ct_{WT})$	7.39
% mRNA Reduction	↓ 99%

Copyright ©2024 Genuin Biotechnologies LLC

RT-qPCR analysis. HeLa cells were infected with DNAJC12-specific shRNA lentiviral particles, total RNA was extracted from wild-type and knockdown cells, RT-qPCR was performed using gene-specific primers.  $\Delta Ct (Ct_{KD}-Ct_{WT})$  was used to calculate mRNA reduction (%) between wild-type and knockdown cells using the following formula:  $(1-1/2^{\Delta Ct}) \times 100\%$ .



Copyright ©2024 Genuin Biotechnologies LLC

Western blotting analysis. DNAJC12 protein expression in wild-type (WT) and shRNA

SUPPORT

SUPPORT@GENUINBIOTECH.COM  
TEL: +1-540-855-7041

ORDERS

SALES@GENUINBIOTECH.COM  
FAX: +1-540-855-7041

WWW.GENUINBIOTECH.COM

knockdown (KD) HeLa cells was detected using Western blotting.  $\beta$ -Tubulin served as a loading control. The blots were incubated with primary antibodies (Cat#62514, 1:5,000) against DNAJC12 and  $\beta$ -Tubulin, respectively, followed by incubating with HRP-conjugated goat anti-rabbit secondary antibody (Cat#201, 1:20,000). Images were developed using FeQ™ ECL Substrate Kit (Cat#226).