

Human FTH1 Knockdown Cell Line (WB-Validated)



Catalog #: C2731

Aliases

FTH1; Ferritin Heavy Chain 1; FTH; PIG15; FTHL6; PLIF; FHC; Cell ProlifeRation-Inducing Gene 15 Protein; ProlifeRation-Inducing Protein 15; Placenta Immunoregulatory Factor; Ferritin, Heavy; Polypeptide 1; Ferritin Heavy Chain; Ferritin H Subunit; Apoferritin; EC 1.16.3.1; H-Ferritin; HFE5

Background

Gene Name: FTH1

NCBI Gene Entry: [2495](#)

Storage

Store at liquid nitrogen for 1 year.

Kit Components

1. Human FTH1 Knockdown Cell Line (Wb-Validated)
2. Wild-type cell line

Parental Cell Line

Human cell line supplied by the client

Validation Methods

RT-qPCR, Western blotting (WB)

Shipping

Shipped on Dry Ice.

Instructions For Use

This knockdown cell line should be paired with wild-type cell line for use.

Note: This product is for research use only.

Validation Data

SUPPORT

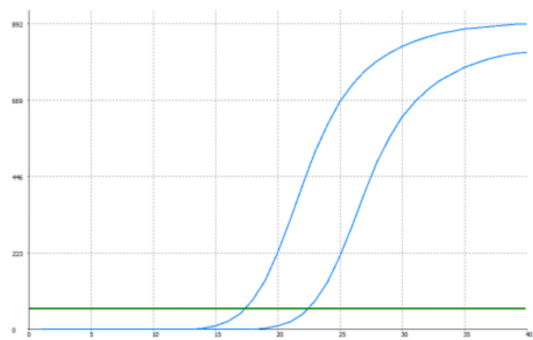
SUPPORT@GENUINBIOTECH.COM
TEL: +1-540-855-7041

ORDERS

SALES@GENUINBIOTECH.COM
FAX: +1-540-855-7041

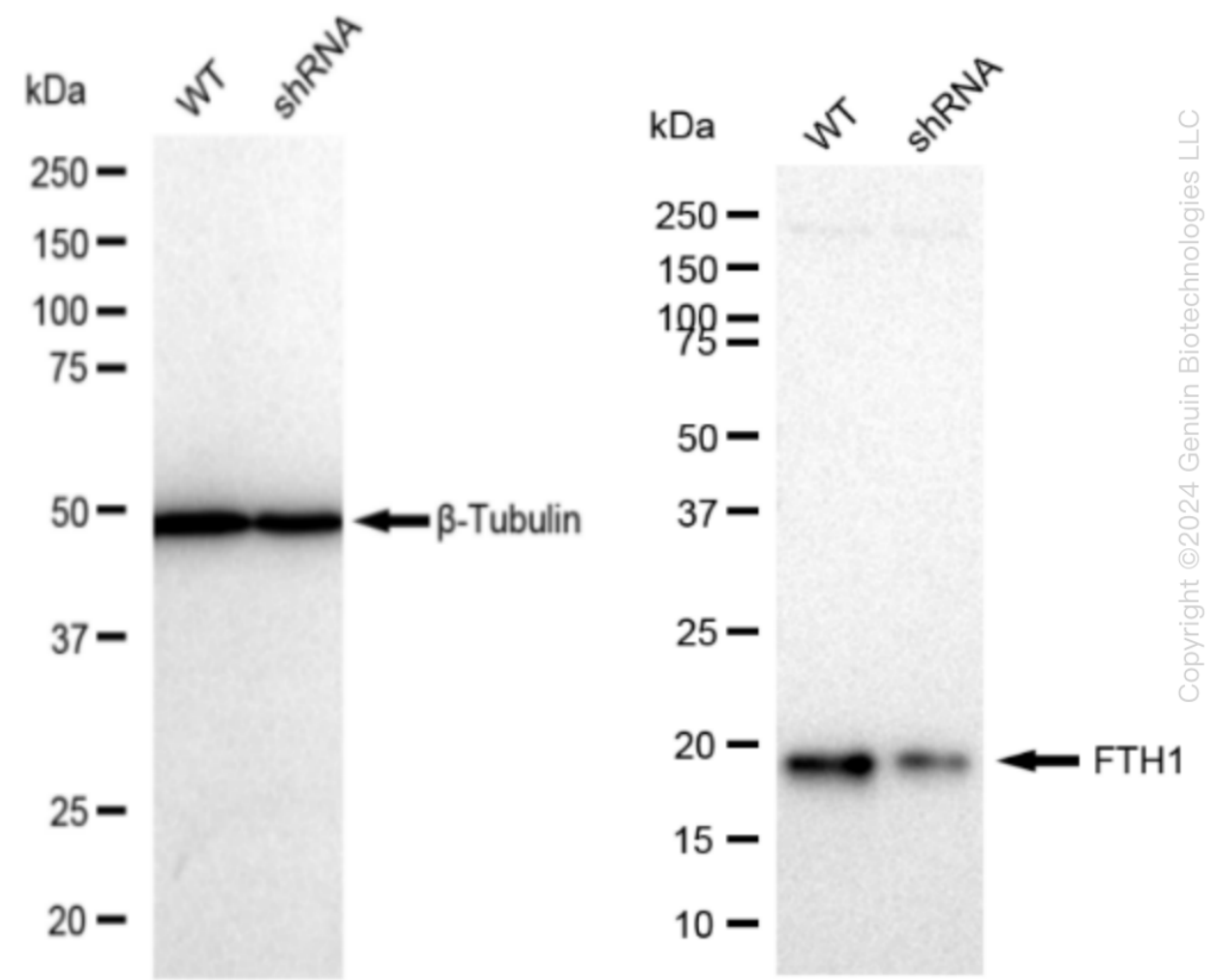
WWW.GENUINBIOTECH.COM

Human FTH1 Knockdown Cell Line (WB-Validated)



Genotype	Ct Value
Wild-Type	17.43
Knock-Down	22.35
$\Delta Ct (Ct_{KD}-Ct_{WT})$	4.92
% mRNA Reduction	↓ 97%

RT-qPCR analysis. HeLa cells were infected with FTH1-specific shRNA lentiviral particles, total RNA was extracted from wild-type and knockdown cells, RT-qPCR was performed using gene-specific primers. $\Delta Ct (Ct_{KD}-Ct_{WT})$ was used to calculate mRNA reduction (%) between wild-type and knockdown cells using the following formula: $(1-1/2^{\Delta Ct}) \times 100\%$.



SUPPORT

SUPPORT@GENUINBIOTECH.COM
TEL: +1-540-855-7041

ORDERS

SALES@GENUINBIOTECH.COM
FAX: +1-540-855-7041

WWW.GENUINBIOTECH.COM

Western blotting analysis. FTH1 protein expression in wild-type (WT) and shRNA knockdown (KD) HeLa cells was detected using Western blotting. β -Tubulin served as a loading control. The blots were incubated with primary antibodies (Cat#68721, 1:5,000) against FTH1 and β -Tubulin, respectively, followed by incubating with HRP-conjugated goat anti-rabbit secondary antibody (Cat#201, 1:20,000). Images were developed using FeQ™ ECL Substrate Kit (Cat#226).