

Human GAP43 Knockdown Cell Line (WB-Validated)



Catalog #: C3143

Aliases

GAP43; Growth Associated Protein 43; Axonal Membrane Protein GAP-43; Neural Phosphoprotein B-50; Neuromodulin; GAP-43; B-50; PP46; Neuron Growth-Associated Protein 43; Nerve Growth-Related Peptide GAP43; Calmodulin-Binding Protein P-57; Protein F1; Growth-Associated Protein 43; Pp46

Background

Gene Name: GAP43

NCBI Gene Entry: [2596](#)

Storage

Store at liquid nitrogen for 1 year.

Kit Components

1. Human GAP43 Knockdown Cell Line (Wb-Validated)
2. Wild-type cell line

Parental Cell Line

Human cell line supplied by the client

Validation Methods

RT-qPCR, Western blotting (WB)

Shipping

Shipped on Dry Ice.

Instructions For Use

This knockdown cell line should be paired with wild-type cell line for use.

Note: This product is for research use only.

Validation Data

SUPPORT

SUPPORT@GENUINBIOTECH.COM
TEL: +1-540-855-7041

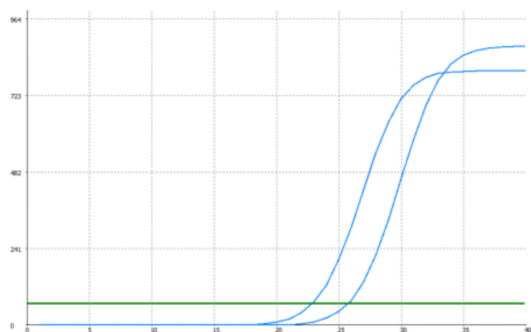
ORDERS

SALES@GENUINBIOTECH.COM
FAX: +1-540-855-7041

WWW.GENUINBIOTECH.COM

Human GAP43 Knockdown Cell Line (WB-Validated)

PAGE 2



| Genotype | Ct Value |
|---------------------------------|----------|
| Wild-Type | 22.55 |
| Knock-Down | 25.55 |
| $\Delta Ct (Ct_{KD} - Ct_{WT})$ | 3.00 |
| % mRNA Reduction | ↓ 88% |

Copyright ©2024 Genuin Biotechnologies LLC

RT-qPCR analysis. HeLa cells were infected with GAP43-specific shRNA lentiviral particles, total RNA was extracted from wild-type and knockdown cells, RT-qPCR was performed using gene-specific primers. $\Delta Ct (Ct_{KD} - Ct_{WT})$ was used to calculate mRNA reduction (%) between wild-type and knockdown cells using the following formula: $(1 - 1/2^{\Delta Ct}) \times 100\%$.

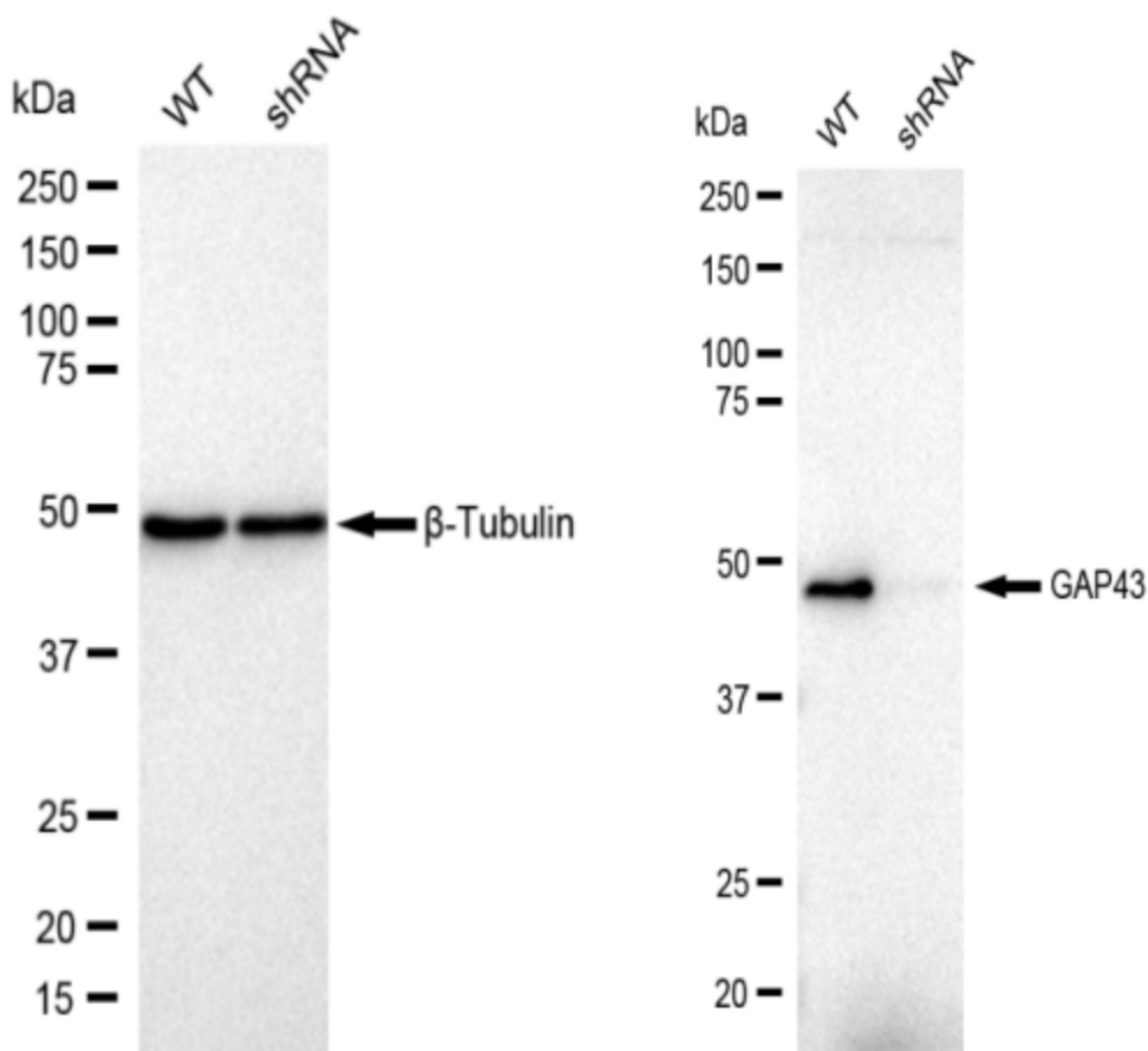
SUPPORT

SUPPORT@GENUINBIOTECH.COM
TEL: +1-540-855-7041

ORDERS

SALES@GENUINBIOTECH.COM
FAX: +1-540-855-7041

WWW.GENUINBIOTECH.COM



Western blotting analysis. GAP43 protein expression in wild-type (WT) and shRNA knockdown (KD) HeLa cells was detected using Western blotting. β -Tubulin served as a loading control. The blots were incubated with primary antibodies (Cat#63163, 1:50,000) against GAP43 and β -Tubulin, respectively, followed by incubating with HRP-conjugated goat anti-rabbit secondary antibody (Cat#201, 1:20,000). Images were developed using FeQ™ ECL Substrate Kit (Cat#226).