

Human HDAC4 Knockdown Cell Line (WB-Validated)



Catalog #: C3214

Aliases

HDAC4; Histone Deacetylase 4; HD4; KIAA0288; HDAC-A; HA6116; HDAC-4; HDACA; EC 3.5.1.98; BDMR; Brachydactyly-Mental Retardation Syndrome; Histone Deacetylase A; NEDCHID; NEDCHF; AHO3

Background

Gene Name: HDAC4
NCBI Gene Entry: [9759](#)

Storage

Store at liquid nitrogen for 1 year.

Kit Components

1. Human HDAC4 Knockdown Cell Line (Wb-Validated)
2. Wild-type cell line

Parental Cell Line

Human cell line supplied by the client

Validation Methods

RT-qPCR, Western blotting (WB)

Shipping

Shipped on Dry Ice.

Instructions For Use

This knockdown cell line should be paired with wild-type cell line for use.

Note: This product is for research use only.

Validation Data

SUPPORT

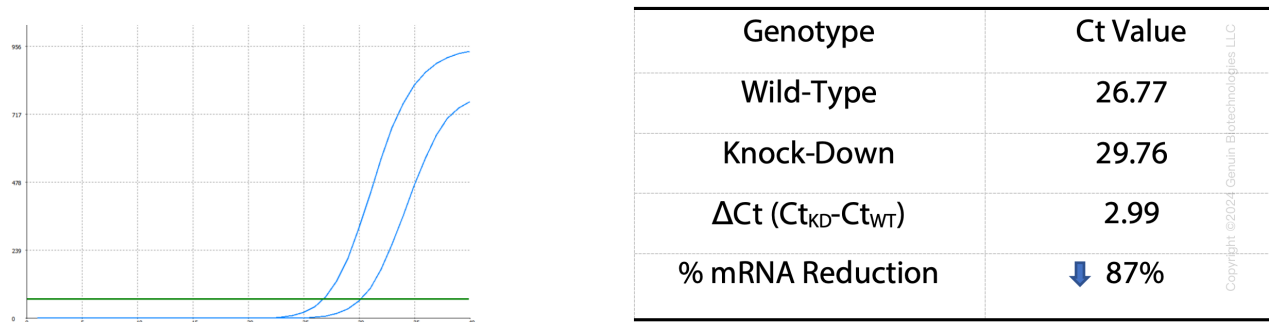
SUPPORT@GENUINBIOTECH.COM
TEL: +1-540-855-7041

ORDERS

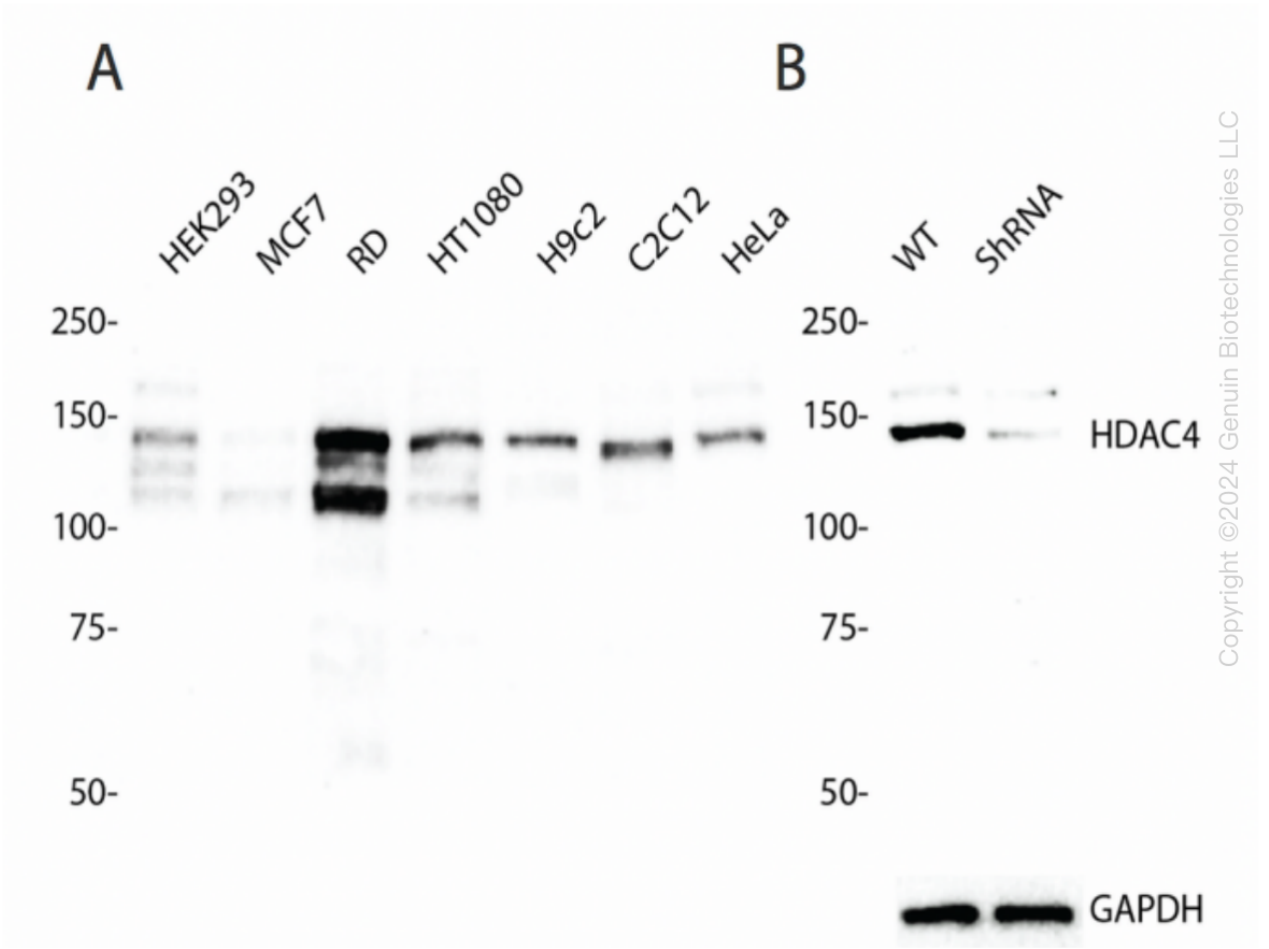
SALES@GENUINBIOTECH.COM
FAX: +1-540-855-7041

WWW.GENUINBIOTECH.COM

Human HDAC4 Knockdown Cell Line (WB-Validated)



RT-qPCR analysis. HeLa cells were infected with HDAC4-specific shRNA lentiviral particles, total RNA was extracted from wild-type and knockdown cells, RT-qPCR was performed using gene-specific primers. Δ Ct (Ct_{KD}-Ct_{WT}) was used to calculate mRNA reduction (%) between wild-type and knockdown cells using the following formula: $(1-1/2^{\Delta\text{Ct}}) \times 100\%$.



Western blotting analysis. HDAC4 protein expression in wild-type (WT) and shRNA knockdown (KD) HeLa cells was detected using Western blotting. β -Tubulin served as a loading control. The

Human HDAC4 Knockdown Cell Line (WB-Validated)

PAGE 3

blots were incubated with primary antibodies (Cat#63244, 1:5,000) against HDAC4 and β -Tubulin, respectively, followed by incubating with HRP-conjugated goat anti-rabbit secondary antibody (Cat#201, 1:20,000). Images were developed using FeQ™ ECL Substrate Kit (Cat#226).

SUPPORT

SUPPORT@GENUINBIOTECH.COM
TEL: +1-540-855-7041

ORDERS

SALES@GENUINBIOTECH.COM
FAX: +1-540-855-7041

WWW.GENUINBIOTECH.COM