

Human MCM7 Knockdown Cell Line (WB-Validated)



Catalog #: C5157

Aliases

MCM7; Minichromosome Maintenance Complex Component 7; P1CDC47; MCM2; P85MCM; CDC47; PNAS146; P1.1-MCM3; DNA Replication Licensing Factor MCM7; CDC47 Homolog; Homolog Of S. Cerevisiae Cdc47; MCM7 Minichromosome Maintenance Deficient 7 (S. Cerevisiae); Minichromosome Maintenance Deficient 7; Minichromosome Maintenance Deficient (S. Cerevisiae) 7; EC 3.6.4.12

Background

Gene Name: MCM7

NCBI Gene Entry: [4176](#)

Storage

Store at liquid nitrogen for 1 year.

Kit Components

1. Human MCM7 Knockdown Cell Line (Wb-Validated)
2. Wild-type cell line

Parental Cell Line

Human cell line supplied by the client

Validation Methods

RT-qPCR, Western blotting (WB)

Shipping

Shipped on Dry Ice.

Instructions For Use

This knockdown cell line should be paired with wild-type cell line for use.

Note: This product is for research use only.

Validation Data

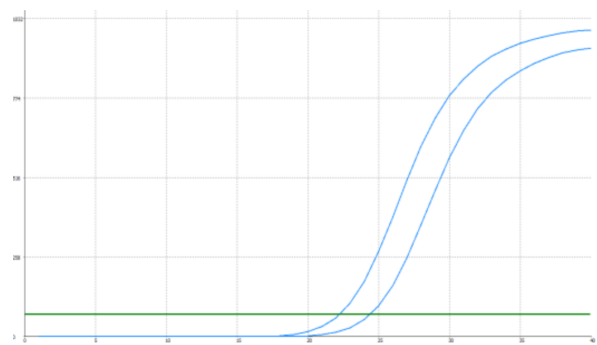
SUPPORT

SUPPORT@GENUINBIOTECH.COM
TEL: +1-540-855-7041

ORDERS

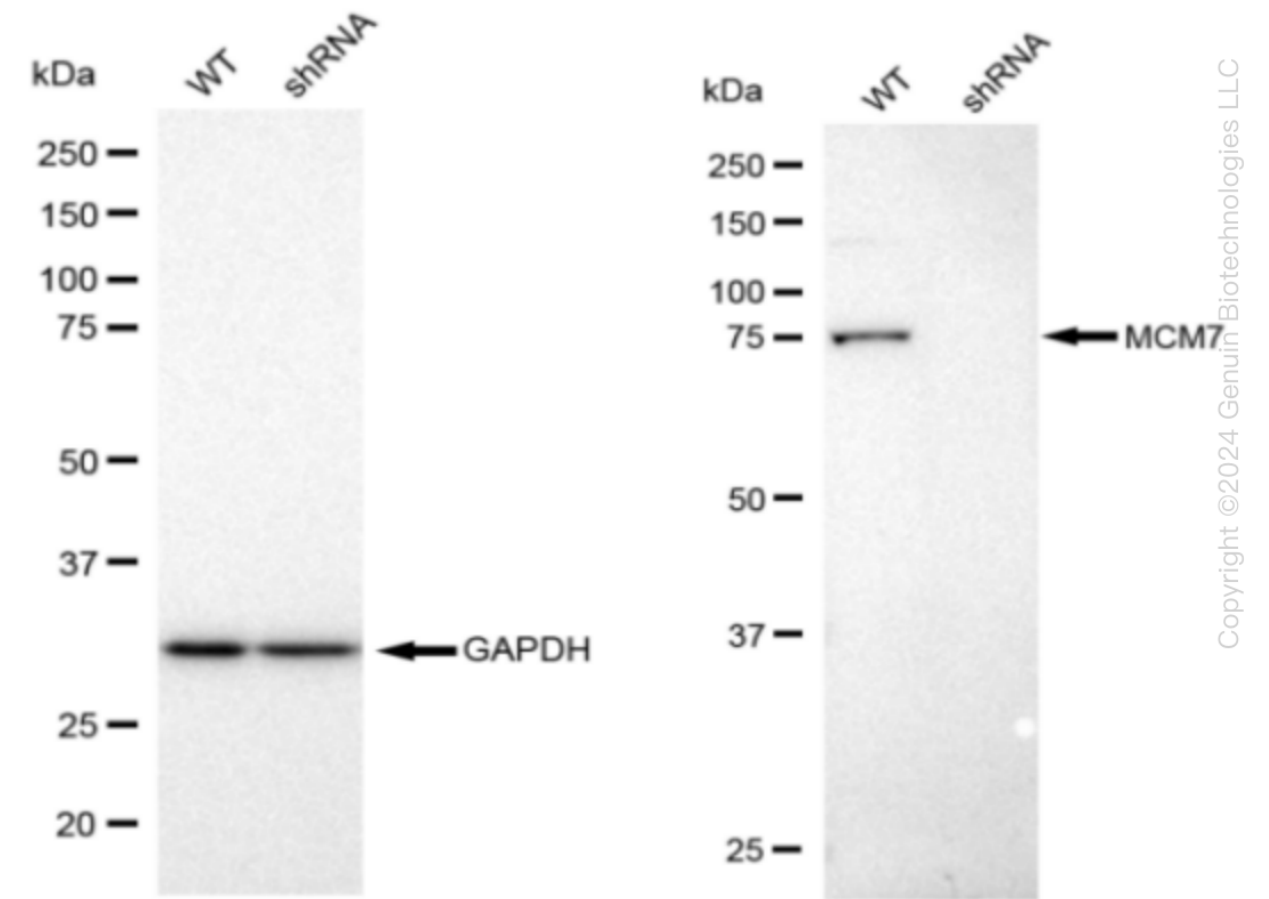
SALES@GENUINBIOTECH.COM
FAX: +1-540-855-7041

WWW.GENUINBIOTECH.COM



Genotype	Ct Value
Wild-Type	22.20
Knock-Down	24.26
$\Delta Ct (Ct_{KD}-Ct_{WT})$	2.06
% mRNA Reduction	<div><div></div>76%</div>

RT-qPCR analysis. HeLa cells were infected with MCM7-specific shRNA lentiviral particles, total RNA was extracted from wild-type and knockdown cells, RT-qPCR was performed using gene-specific primers. $\Delta Ct (Ct_{KD}-Ct_{WT})$ was used to calculate mRNA reduction (%) between wild-type and knockdown cells using the following formula: $(1-1/2^{\Delta Ct}) \times 100\%$.



Western blotting analysis. MCM7 protein expression in wild-type (WT) and shRNA knockdown (KD) HeLa cells was detected using Western blotting. GAPDH served as a loading control. The

Human MCM7 Knockdown Cell Line (WB-Validated)

PAGE 3

blots were incubated with primary antibodies (Cat#68157, 1:5,000) against MCM7 and GAPDH, respectively, followed by incubating with HRP-conjugated goat anti-rabbit secondary antibody (Cat#201, 1:20,000). Images were developed using FeQ™ ECL Substrate Kit (Cat#226).

SUPPORT

SUPPORT@GENUINBIOTECH.COM
TEL: +1-540-855-7041

ORDERS

SALES@GENUINBIOTECH.COM
FAX: +1-540-855-7041

WWW.GENUINBIOTECH.COM