

# Human NCSTN Knockdown Cell Line (WB-Validated)



**Catalog #: C5175**

## Aliases

NCSTN; Nicastrin; ATAG1874; Anterior Pharynx-Defective 2; KIAA0253

## Background

Gene Name: NCSTN

NCBI Gene Entry: [23385](#)

## Storage

Store at liquid nitrogen for 1 year.

## Kit Components

1. Human NCSTN Knockdown Cell Line (Wb-Validated)
2. Wild-type cell line

## Parental Cell Line

Human cell line supplied by the client

## Validation Methods

RT-qPCR, Western blotting (WB)

## Shipping

Shipped on Dry Ice.

## Instructions For Use

This knockdown cell line should be paired with wild-type cell line for use.

**Note:** This product is for research use only.

## Validation Data

---

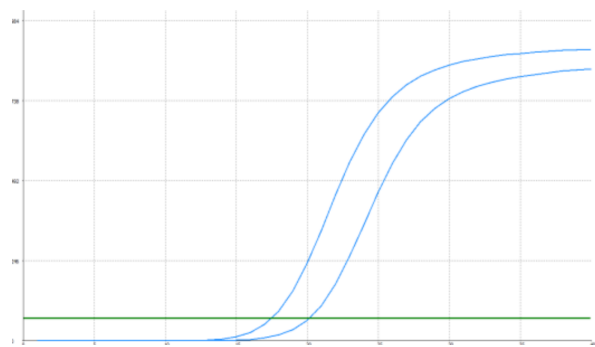
### SUPPORT

SUPPORT@GENUINBIOTECH.COM  
TEL: +1-540-855-7041

### ORDERS

SALES@GENUINBIOTECH.COM  
FAX: +1-540-855-7041

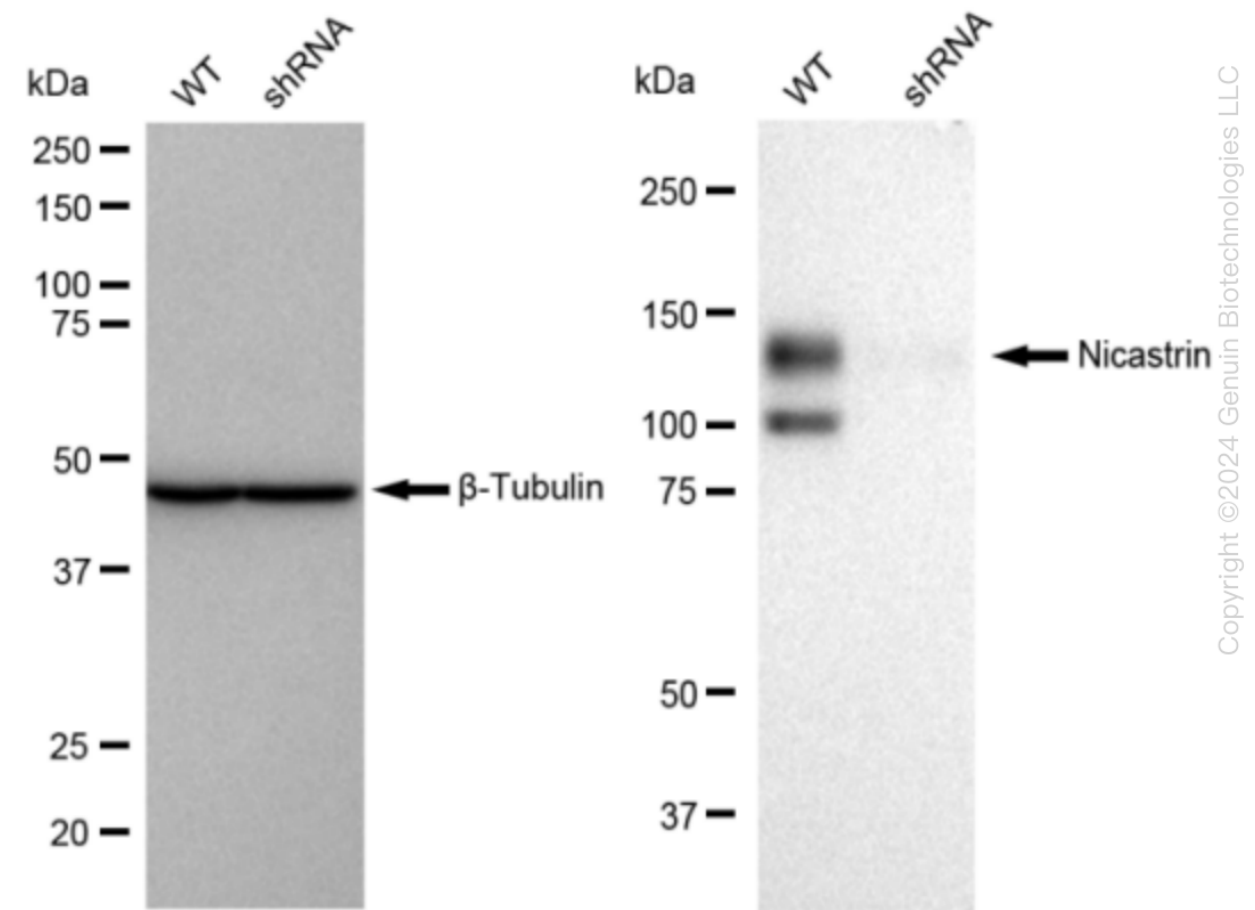
[WWW.GENUINBIOTECH.COM](http://WWW.GENUINBIOTECH.COM)



Genotype	Ct Value
Wild-Type	17.34
Knock-Down	19.91
$\Delta$ Ct (Ct <sub>KD</sub> -Ct <sub>WT</sub> )	2.57
% mRNA Reduction	↓ 83%

Copyright ©2024 Genuin Biotechnologies LLC

RT-qPCR analysis. HT-1080 cells were infected with NCSTN-specific shRNA lentiviral particles, total RNA was extracted from wild-type and knockdown cells, RT-qPCR was performed using gene-specific primers.  $\Delta$ Ct (Ct<sub>KD</sub>-Ct<sub>WT</sub>) was used to calculate mRNA reduction (%) between wild-type and knockdown cells using the following formula:  $(1-1/2^{\Delta$ Ct) x 100%.



Copyright ©2024 Genuin Biotechnologies LLC

Western blotting analysis. NCSTN protein expression in wild-type (WT) and shRNA knockdown (KD) HT-1080 cells was detected using Western blotting.  $\beta$ -Tubulin served as a loading control.

## **Human NCSTN Knockdown Cell Line (WB-Validated)**

PAGE 3

The blots were incubated with primary antibodies (Cat#61775, 1:5,000) against NCSTN and  $\beta$ -Tubulin, respectively, followed by incubating with HRP-conjugated goat anti-rabbit secondary antibody (Cat#201, 1:20,000). Images were developed using FeQ™ ECL Substrate Kit (Cat#226).

---

### **SUPPORT**

SUPPORT@GENUINBIOTECH.COM  
TEL: +1-540-855-7041

### **ORDERS**

SALES@GENUINBIOTECH.COM  
FAX: +1-540-855-7041

**WWW.GENUINBIOTECH.COM**