

# Human KIF11 Knockdown Cell Line (WB-Validated)



**Catalog #: C60146**

## Aliases

KIF11; Kinesin Family Member 11; TRIP5; KNSL1; HKSP; EG5; Thyroid Receptor-Interacting Protein 5; Kinesin-Like Spindle Protein HKSP; Kinesin-Related Motor Protein Eg5; Kinesin-Like Protein KIF11; TR-Interacting Protein 5; Kinesin-Like Protein 1; TRIP-5; Kinesin-Like 1; MCLMR; Eg5

## Background

Gene Name: KIF11

NCBI Gene Entry: [3832](#)

## Storage

Store at liquid nitrogen for 1 year.

## Kit Components

1. Human KIF11 Knockdown Cell Line (Wb-Validated)
2. Wild-type cell line

## Parental Cell Line

Human cell line supplied by the client

## Validation Methods

RT-qPCR, Western blotting (WB)

## Shipping

Shipped on Dry Ice.

## Instructions For Use

This knockdown cell line should be paired with wild-type cell line for use.

**Note:** This product is for research use only.

## Validation Data

---

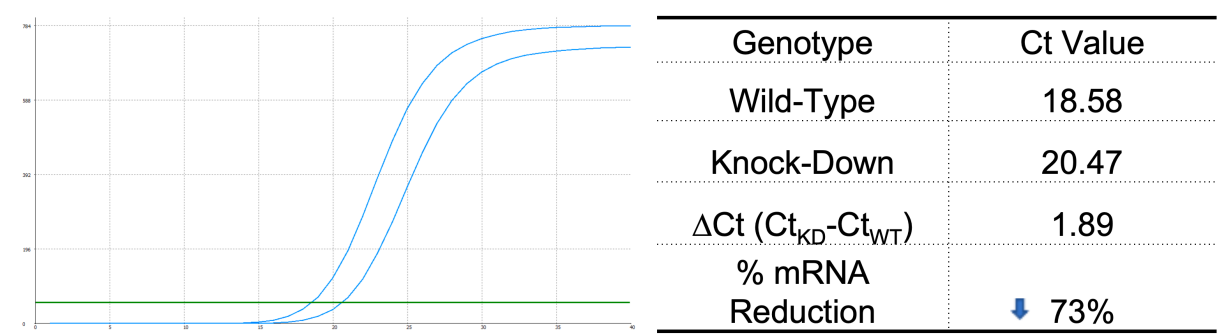
### SUPPORT

SUPPORT@GENUINBIOTECH.COM  
TEL: +1-540-855-7041

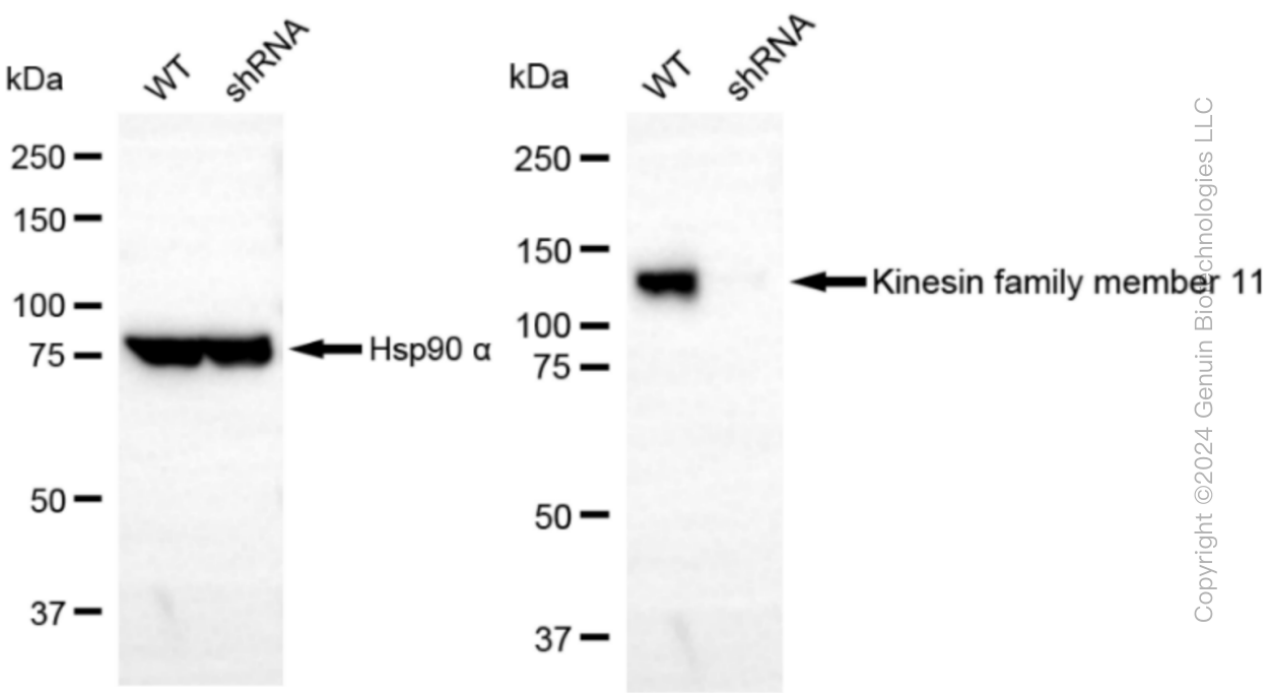
### ORDERS

SALES@GENUINBIOTECH.COM  
FAX: +1-540-855-7041

[WWW.GENUINBIOTECH.COM](http://WWW.GENUINBIOTECH.COM)



RT-qPCR analysis. 293T cells were infected with KIF11-specific shRNA lentiviral particles, total RNA was extracted from wild-type and knockdown cells, RT-qPCR was performed using gene-specific primers.  $\Delta Ct (Ct_{KD} - Ct_{WT})$  was used to calculate mRNA reduction (%) between wild-type and knockdown cells using the following formula:  $(1 - 1/2^{\Delta Ct}) \times 100\%$ .



Western blotting analysis. KIF11 protein expression in wild-type (WT) and shRNA knockdown (KD) 293T cells was detected using Western blotting. Hsp90  $\alpha$  served as a loading control. The blots were incubated with primary antibodies against KIF11 and Hsp90  $\alpha$ , respectively, followed by incubating with HRP-conjugated goat anti-rabbit secondary antibody. Images were developed using FeQ™ ECL Substrate Kit.