

Human MACROH2A1 Knockdown Cell Line (WB-Validated)



Catalog #: C61119

Aliases

MACROH2A1; MacroH2A.1 Histone; H2AFY; Medulloblastoma Antigen MU-MB-50.205; H2A Histone Family Member Y; Core Histone Macro-H2A.1; Histone MacroH2A1; Histone H2A.Y; MacroH2A1.2; H2A/Y; MH2A1; H2A Histone Family, Member Y; Histone MacroH2A1.1; Histone MacroH2A1.2; MACROH2A1.1; MACROH2A1.2; H2AF12M; H2A.Y

Background

Gene Name: MACROH2A1

NCBI Gene Entry: [9555](#)

Storage

Store at liquid nitrogen for 1 year.

Kit Components

1. Human MACROH2A1 Knockdown Cell Line (Wb-Validated)
2. Wild-type cell line

Parental Cell Line

Human cell line supplied by the client

Validation Methods

RT-qPCR, Western blotting (WB)

Shipping

Shipped on Dry Ice.

Instructions For Use

This knockdown cell line should be paired with wild-type cell line for use.

Note: This product is for research use only.

Validation Data

SUPPORT

SUPPORT@GENUINBIOTECH.COM
TEL: +1-540-855-7041

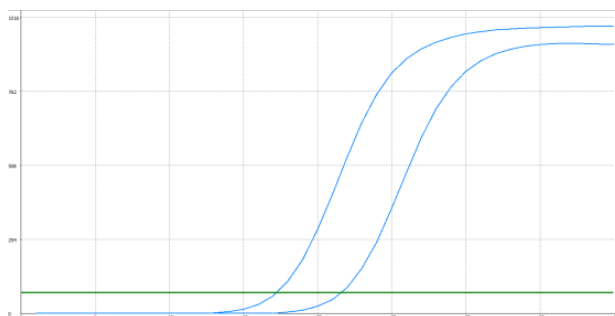
ORDERS

SALES@GENUINBIOTECH.COM
FAX: +1-540-855-7041

WWW.GENUINBIOTECH.COM

Human MACROH2A1 Knockdown Cell Line (WB-Validated)

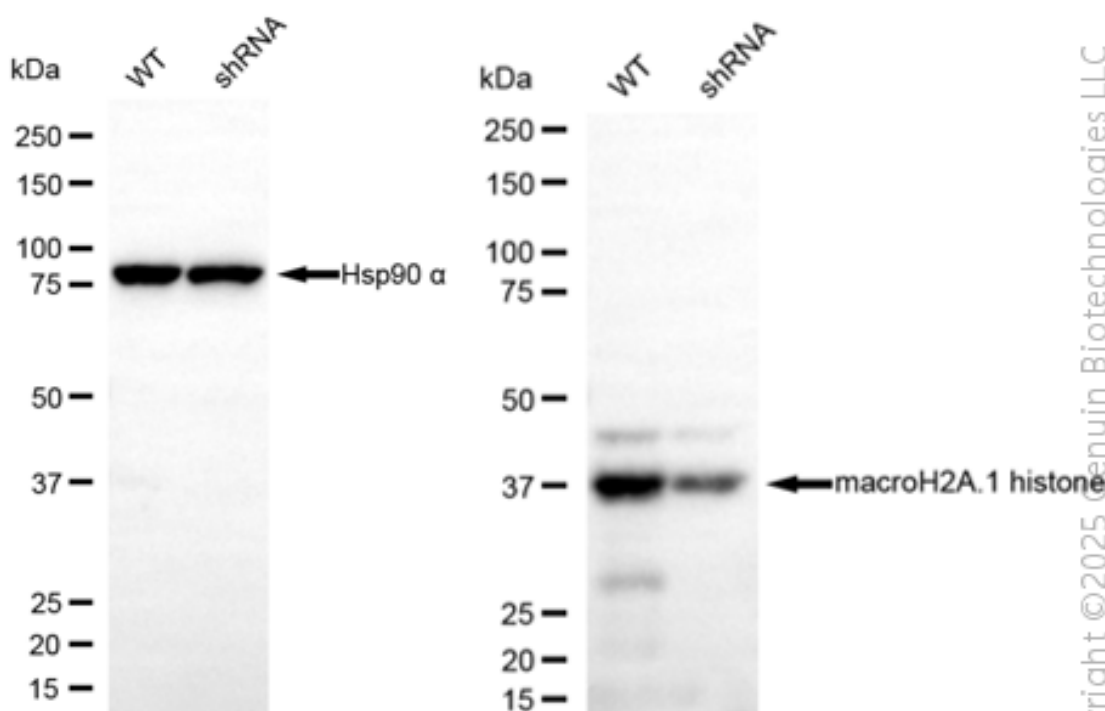
PAGE 2



Genotype	Ct Value
Wild-Type	17.20
Knock-Down	21.43
ΔCt (CtKD-CtWT)	4.23
% mRNA Reduction	95%

Copyright ©2025 Genuin Biotechnologies LLC

RT-qPCR analysis. HeLa cells were infected with MACROH2A1-specific shRNA lentiviral particles, total RNA was extracted from wild-type and knockdown cells, RT-qPCR was performed using gene-specific primers. ΔCt (CtKD-CtWT) was used to calculate mRNA reduction (%) between wild-type and knockdown cells using the following formula: $(1-1/2^{\Delta Ct}) \times 100\%$.



Copyright ©2025 Genuin Biotechnologies LLC

Western blotting analysis. MACROH2A1 protein expression in wild-type (WT) and shRNA knockdown (KD) HeLa cells was detected using Western blotting. Hsp90 α served as a loading control. The blots were incubated with primary antibodies against MACROH2A1 and Hsp90 α ,

SUPPORT

SUPPORT@GENUINBIOTECH.COM
TEL: +1-540-855-7041

ORDERS

SALES@GENUINBIOTECH.COM
FAX: +1-540-855-7041

WWW.GENUINBIOTECH.COM

Human MACROH2A1 Knockdown Cell Line (WB-Validated)

PAGE 3

respectively, followed by incubating with HRP-conjugated goat anti-rabbit secondary antibody. Images were developed using NaQ™ ECL Substrate Kit.

SUPPORT

SUPPORT@GENUINBIOTECH.COM
TEL: +1-540-855-7041

ORDERS

SALES@GENUINBIOTECH.COM
FAX: +1-540-855-7041

WWW.GENUINBIOTECH.COM