

Human HSPB8 Knockdown Cell Line (WB-Validated)



Catalog #: C61129

Aliases

HSPB8; Heat Shock Protein Family B (Small) Member 8; E2IG1; HSP22; CMT2L; H11; Small Stress Protein-Like Protein HSP22; Heat Shock 27kDa Protein 8; Heat Shock 22kDa Protein 8; Heat Shock Protein Beta-8; E2-Induced Gene 1 Protein; Alpha-Crystallin C Chain; Protein Kinase H11; HSPB8-N1; HSPB8-N2; DHMN2; HMN2A; CRYAC; HspB8; HMN2

Background

Gene Name: HSPB8

NCBI Gene Entry: [26353](#)

Storage

Store at liquid nitrogen for 1 year.

Kit Components

1. Human HSPB8 Knockdown Cell Line (Wb-Validated)
2. Wild-type cell line

Parental Cell Line

Human cell line supplied by the client

Validation Methods

RT-qPCR, Western blotting (WB)

Shipping

Shipped on Dry Ice.

Instructions For Use

This knockdown cell line should be paired with wild-type cell line for use.

Note: This product is for research use only.

Validation Data

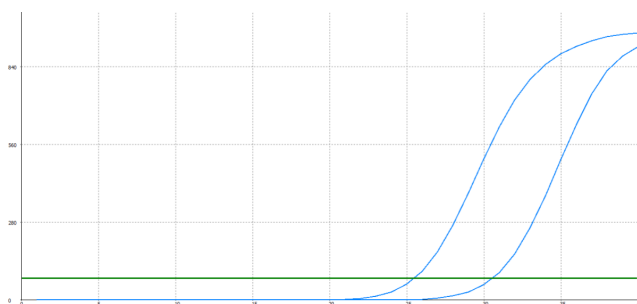
SUPPORT

SUPPORT@GENUINBIOTECH.COM
TEL: +1-540-855-7041

ORDERS

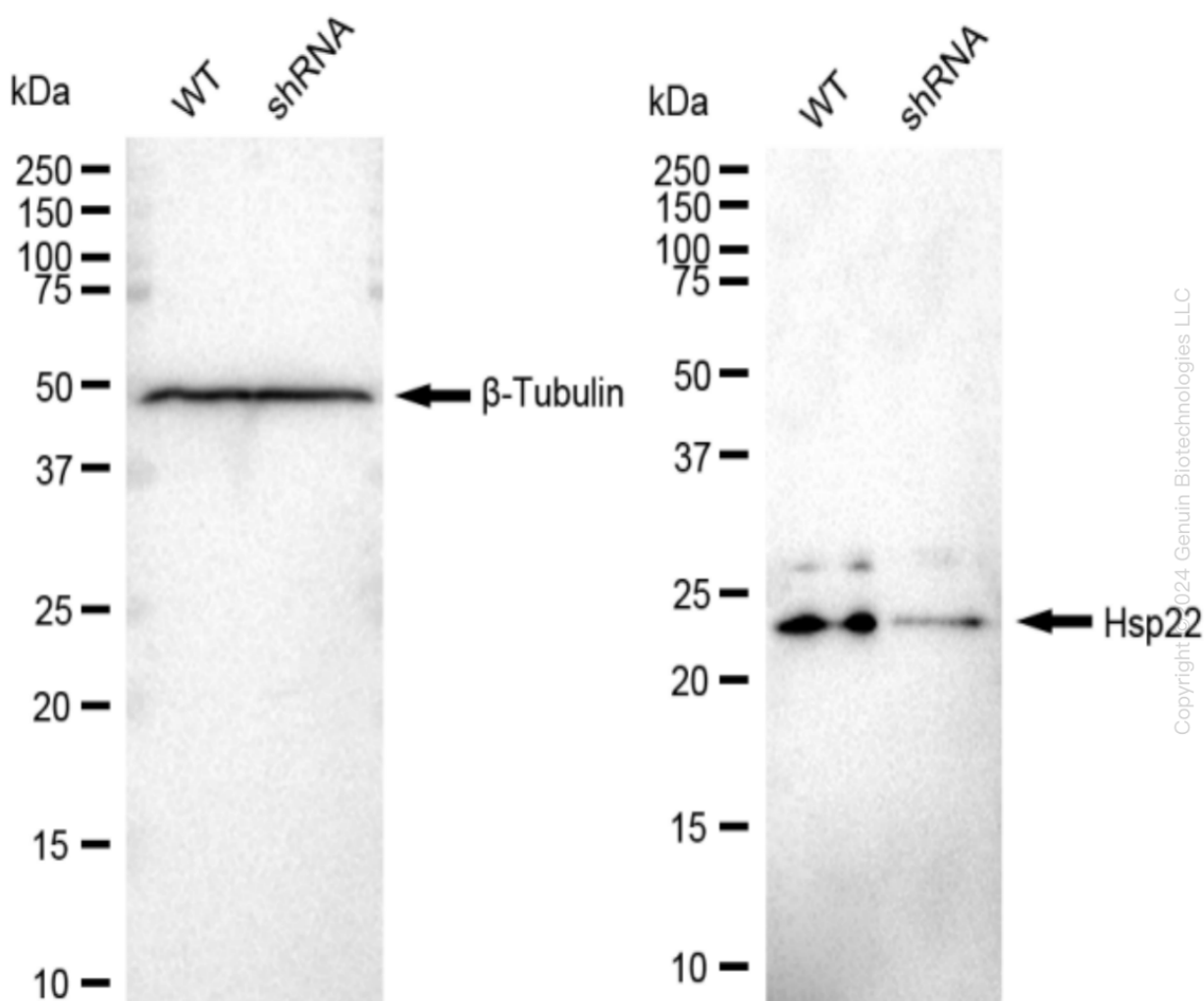
SALES@GENUINBIOTECH.COM
FAX: +1-540-855-7041

WWW.GENUINBIOTECH.COM



Genotype	Ct Value
Wild-Type	25.24
Knock-Down	30.23
$\Delta Ct (Ct_{KD} - Ct_{WT})$	4.99
% mRNA Reduction	↓ 97%

RT-qPCR analysis. 293T cells were infected with HSPB8-specific shRNA lentiviral particles, total RNA was extracted from wild-type and knockdown cells, RT-qPCR was performed using gene-specific primers. $\Delta Ct (Ct_{KD} - Ct_{WT})$ was used to calculate mRNA reduction (%) between wild-type and knockdown cells using the following formula: $(1 - 1/2^{\Delta Ct}) \times 100\%$.



Western blotting analysis. HSPB8 protein expression in wild-type (WT) and shRNA knockdown (KD) 293T cells was detected using Western blotting. β -Tubulin served as a loading control. The

Human HSPB8 Knockdown Cell Line (WB-Validated)

PAGE 3

blots were incubated with primary antibodies against HSPB8 and β -Tubulin, respectively, followed by incubating with HRP-conjugated goat anti-rabbit secondary antibody. Images were developed using FeQ™ ECL Substrate Kit.

SUPPORT

SUPPORT@GENUINBIOTECH.COM
TEL: +1-540-855-7041

ORDERS

SALES@GENUINBIOTECH.COM
FAX: +1-540-855-7041

WWW.GENUINBIOTECH.COM