

# Human CRTC3 Knockdown Cell Line (WB-Validated)



**Catalog #: C61131**

## Aliases

CRTC3; CREB Regulated Transcription Coactivator 3; CREB-Regulated Transcription Coactivator 3; FLJ21868; TORC-3; TORC3; Transducer Of Regulated CAMP Response Element-Binding Protein (CREB) 3; Transducer Of Regulated CAMP Response Element-Binding Protein 3; Transducer Of Regulated CREB Protein 3; Transducer Of CREB Protein 3

## Background

Gene Name: CRTC3

NCBI Gene Entry: [64784](#)

## Storage

Store at liquid nitrogen for 1 year.

## Kit Components

1. Human CRTC3 Knockdown Cell Line (Wb-Validated)
2. Wild-type cell line

## Parental Cell Line

Human cell line supplied by the client

## Validation Methods

RT-qPCR, Western blotting (WB)

## Shipping

Shipped on Dry Ice.

## Instructions For Use

This knockdown cell line should be paired with wild-type cell line for use.

**Note:** This product is for research use only.

## Validation Data

---

### SUPPORT

SUPPORT@GENUINBIOTECH.COM  
TEL: +1-540-855-7041

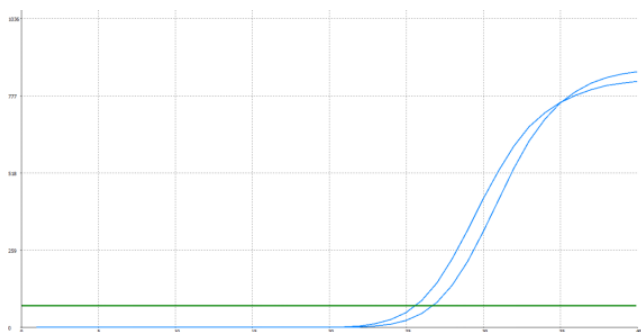
### ORDERS

SALES@GENUINBIOTECH.COM  
FAX: +1-540-855-7041

[WWW.GENUINBIOTECH.COM](http://WWW.GENUINBIOTECH.COM)

## Human CRTC3 Knockdown Cell Line (WB-Validated)

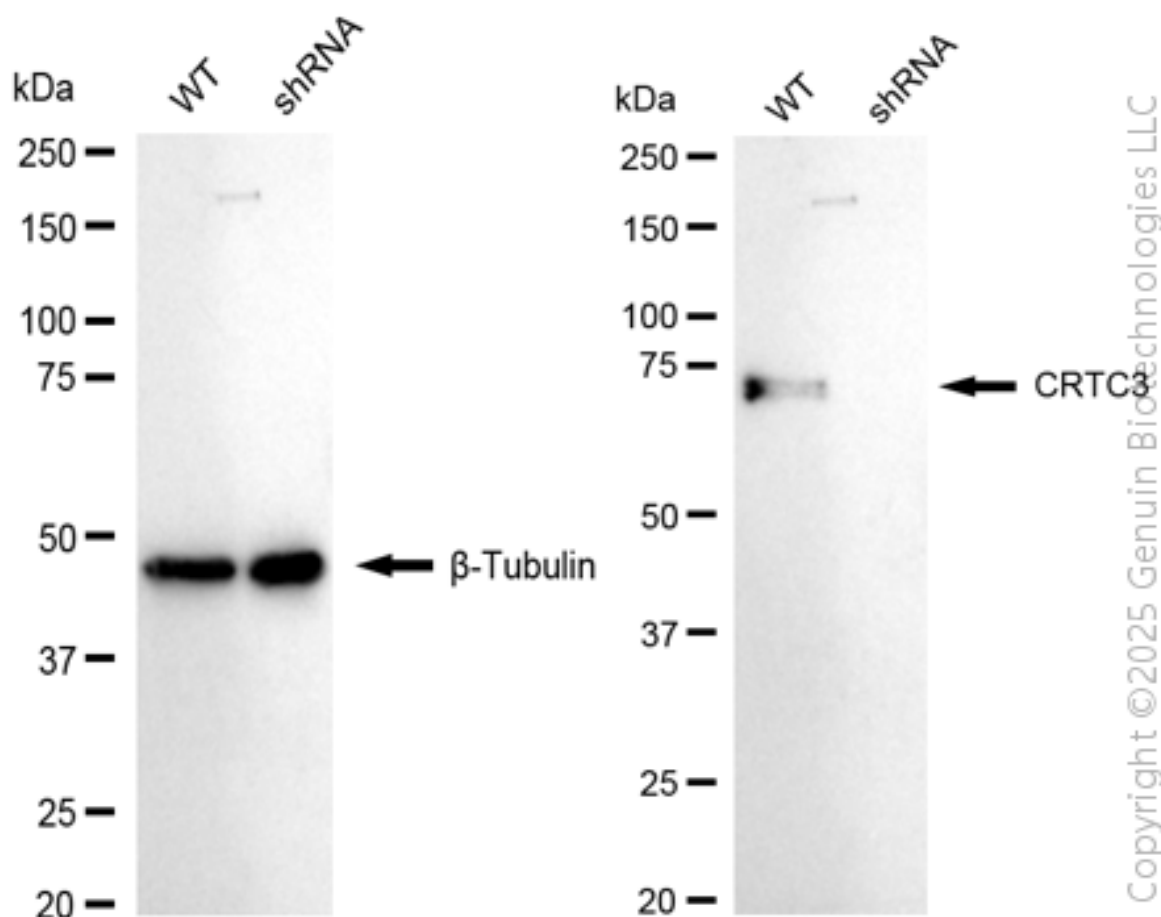
PAGE 2



Genotype	Ct Value
Wild-Type	25.20
Knock-Down	26.39
$\Delta$ Ct (CtKD-CtWT)	1.19
% mRNA Reduction	56%

Copyright © 2025 Genuin Biotechnologies LLC

RT-qPCR analysis. HT-1080 cells were infected with CRTC3-specific shRNA lentiviral particles, total RNA was extracted from wild-type and knockdown cells, RT-qPCR was performed using gene-specific primers.  $\Delta$ Ct (CtKD-CtWT) was used to calculate mRNA reduction (%) between wild-type and knockdown cells using the following formula:  $(1 - 1/2^{\Delta\text{Ct}}) \times 100\%$ .



Copyright © 2025 Genuin Biotechnologies LLC

Western blotting analysis. CRTC3 protein expression in wild-type (WT) and shRNA knockdown (KD) HT-1080 cells was detected using Western blotting.  $\beta$ -Tubulin served as a loading control. The blots were incubated with primary antibodies against CRTC3 and  $\beta$ -Tubulin, respectively,

### SUPPORT

SUPPORT@GENUINBIOTECH.COM  
TEL: +1-540-855-7041

### ORDERS

SALES@GENUINBIOTECH.COM  
FAX: +1-540-855-7041

[WWW.GENUINBIOTECH.COM](http://WWW.GENUINBIOTECH.COM)

## **Human CRTC3 Knockdown Cell Line (WB-Validated)**

PAGE 3

followed by incubating with HRP-conjugated goat anti-rabbit secondary antibody. Images were developed using FeQ™ ECL Substrate Kit.

---

### **SUPPORT**

SUPPORT@GENUINBIOTECH.COM  
TEL: +1-540-855-7041

### **ORDERS**

SALES@GENUINBIOTECH.COM  
FAX: +1-540-855-7041

**WWW.GENUINBIOTECH.COM**