

# Human ROCK2 Knockdown Cell Line (WB-Validated)



**Catalog #: C61147**

## Aliases

ROCK2; Rho Associated Coiled-Coil Containing Protein Kinase 2; Rho-Associated, Coiled-Coil-Containing Protein Kinase II; Rho-Associated Protein Kinase 2; P164 ROCK-2; EC 2.7.11.1; ROCK-II; Rho-Associated, Coiled-Coil-Containing Protein Kinase 2; Rho Kinase 2; EC 2.7.11; KIAA0619

## Background

Gene Name: ROCK2

NCBI Gene Entry: [9475](#)

## Storage

Store at liquid nitrogen for 1 year.

## Kit Components

1. Human ROCK2 Knockdown Cell Line (Wb-Validated)
2. Wild-type cell line

## Parental Cell Line

Human cell line supplied by the client

## Validation Methods

RT-qPCR, Western blotting (WB)

## Shipping

Shipped on Dry Ice.

## Instructions For Use

This knockdown cell line should be paired with wild-type cell line for use.

**Note:** This product is for research use only.

## Validation Data

---

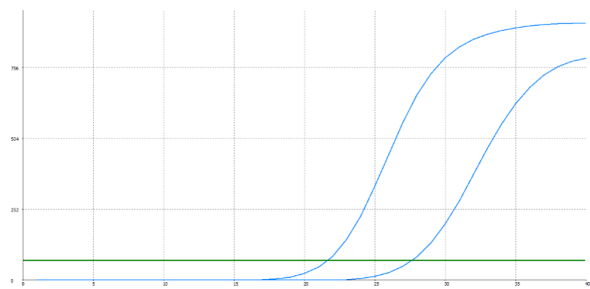
### SUPPORT

SUPPORT@GENUINBIOTECH.COM  
TEL: +1-540-855-7041

### ORDERS

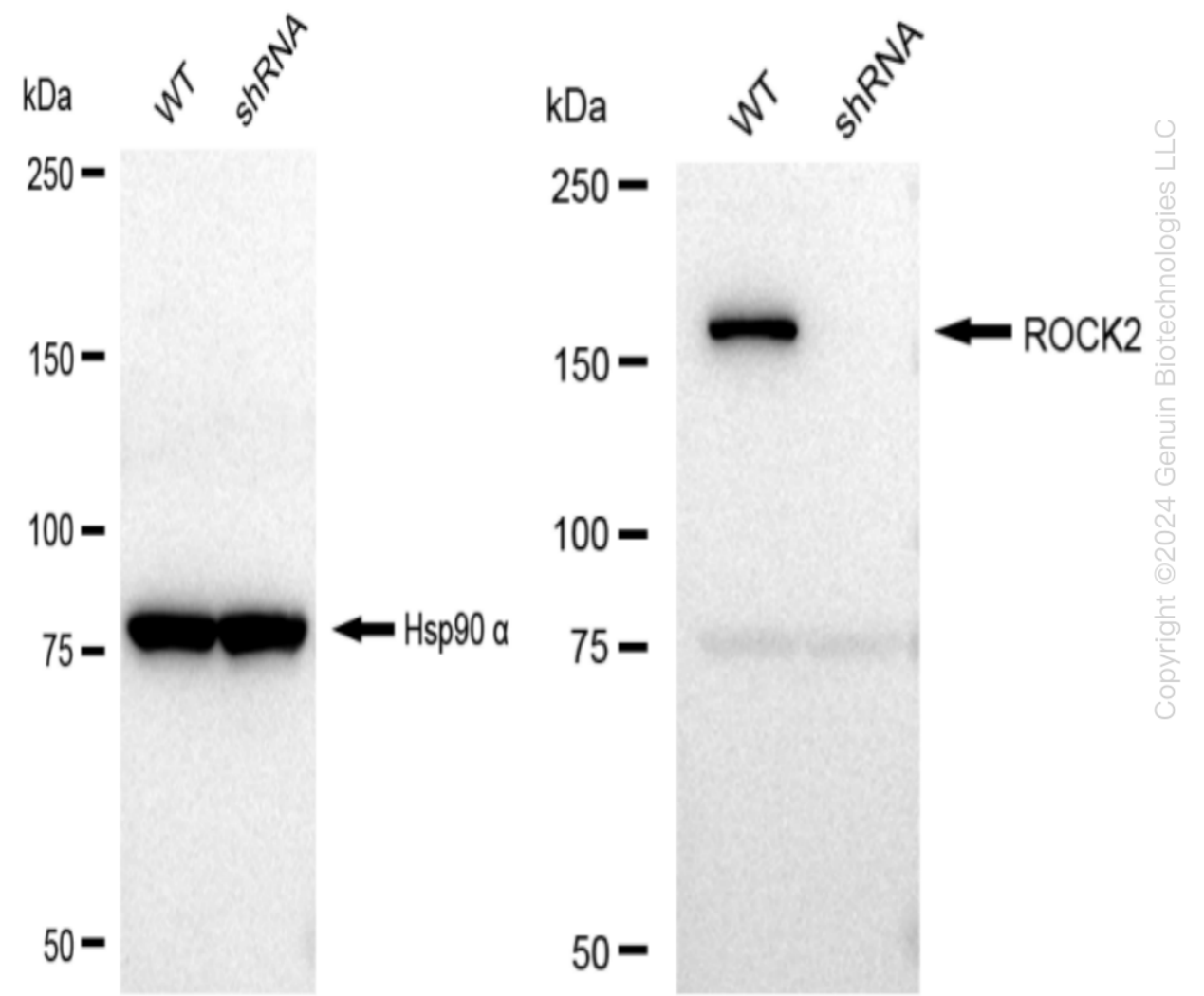
SALES@GENUINBIOTECH.COM  
FAX: +1-540-855-7041

[WWW.GENUINBIOTECH.COM](http://WWW.GENUINBIOTECH.COM)



Genotype	Ct Value
Wild-Type	21.49
Knock-Down	27.19
$\Delta$ Ct (Ct <sub>KD</sub> -Ct <sub>WT</sub> )	5.70
% mRNA Reduction	↓ 98%

RT-qPCR analysis. HeLa cells were infected with ROCK2-specific shRNA lentiviral particles, total RNA was extracted from wild-type and knockdown cells, RT-qPCR was performed using gene-specific primers.  $\Delta$ Ct (Ct<sub>KD</sub>-Ct<sub>WT</sub>) was used to calculate mRNA reduction (%) between wild-type and knockdown cells using the following formula:  $(1-1/2^{\Delta\text{Ct}}) \times 100\%$ .



Western blotting analysis. ROCK2 protein expression in wild-type (WT) and shRNA knockdown

## Human ROCK2 Knockdown Cell Line (WB-Validated)

PAGE 3

(KD) HeLa cells was detected using Western blotting. Hsp90  $\alpha$  served as a loading control. The blots were incubated with primary antibodies (Cat#61147, 1:5,000) against ROCK2 and Hsp90  $\alpha$ , respectively, followed by incubating with HRP-conjugated goat anti-rabbit secondary antibody (Cat#201, 1:20,000). Images were developed using FeQ™ ECL Substrate Kit (Cat#226).

---

### SUPPORT

SUPPORT@GENUINBIOTECH.COM  
TEL: +1-540-855-7041

### ORDERS

SALES@GENUINBIOTECH.COM  
FAX: +1-540-855-7041

[WWW.GENUINBIOTECH.COM](http://WWW.GENUINBIOTECH.COM)