

Human GTF2F2 Knockdown Cell Line (WB-Validated)



Catalog #: C61163

Aliases

GTF2F2; General Transcription Factor IIF Subunit 2; RAP30; TFIIF; BTF4; General Transcription Factor IIF, Polypeptide 2, 30kDa; Transcription Initiation Factor IIF Subunit Beta; General Transcription Factor IIF 30 KDa Subunit; Transcription Initiation Factor RAP30; TFIIF-Beta; General Transcription Factor IIF, Polypeptide 1 (74kD Subunit); ATP-Dependent Helicase GTF2F2; EC 3.6.1; TF2F2

Background

Gene Name: GTF2F2
NCBI Gene Entry: [2963](#)

Storage

Store at liquid nitrogen for 1 year.

Kit Components

1. Human GTF2F2 Knockdown Cell Line (Wb-Validated)
2. Wild-type cell line

Parental Cell Line

Human cell line supplied by the client

Validation Methods

RT-qPCR, Western blotting (WB)

Shipping

Shipped on Dry Ice.

Instructions For Use

This knockdown cell line should be paired with wild-type cell line for use.

Note: This product is for research use only.

Validation Data

SUPPORT

SUPPORT@GENUINBIOTECH.COM
TEL: +1-540-855-7041

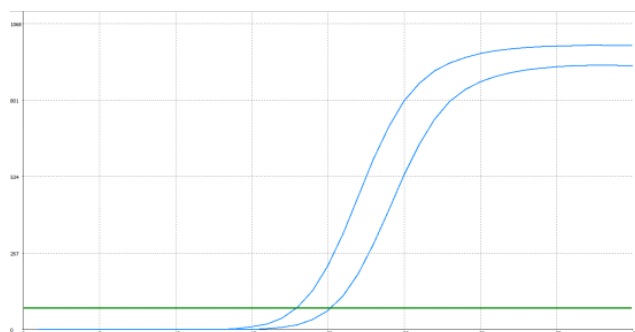
ORDERS

SALES@GENUINBIOTECH.COM
FAX: +1-540-855-7041

WWW.GENUINBIOTECH.COM

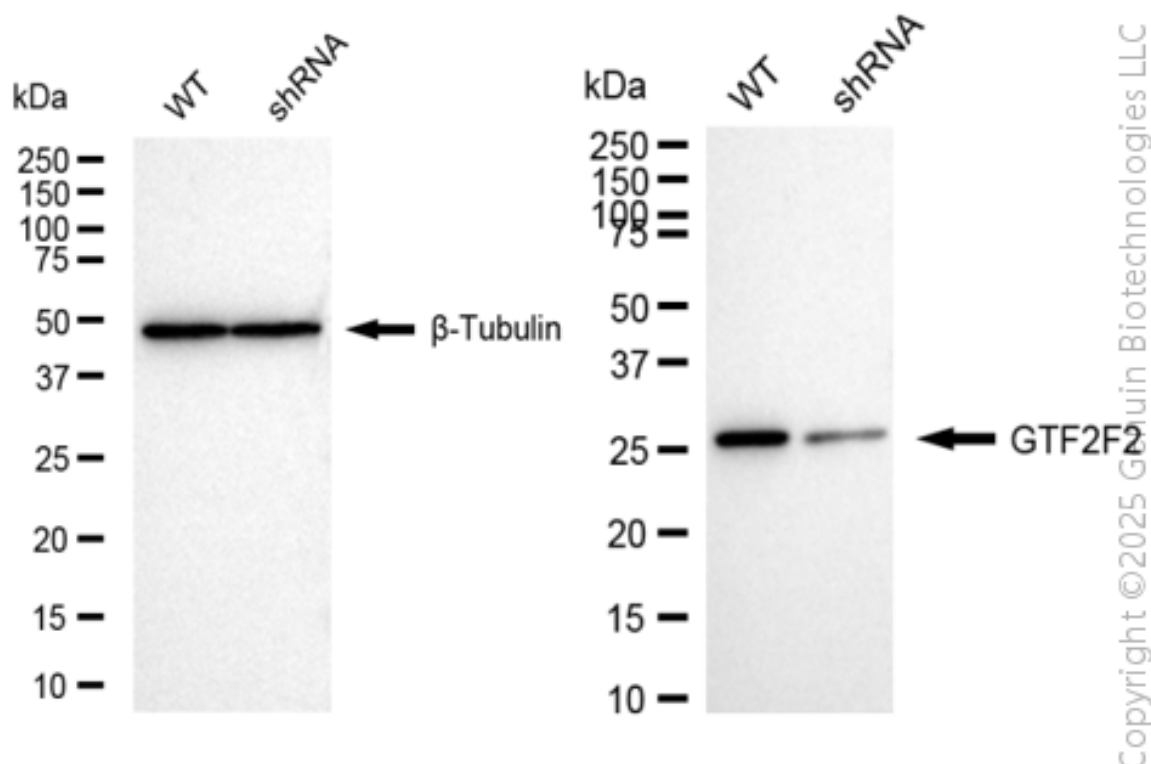
Human GTF2F2 Knockdown Cell Line (WB-Validated)

PAGE 2



Genotype	Ct Value
Wild-Type	17.82
Knock-Down	19.98
Δ Ct (CtKD-CtWT)	2.16
% mRNA Reduction	78%

RT-qPCR analysis. HeLa cells were infected with GTF2F2-specific shRNA lentiviral particles, total RNA was extracted from wild-type and knockdown cells, RT-qPCR was performed using gene-specific primers. Δ Ct (CtKD-CtWT) was used to calculate mRNA reduction (%) between wild-type and knockdown cells using the following formula: $(1 - 1/2^{\Delta\text{Ct}}) \times 100\%$.



Western blotting analysis. GTF2F2 protein expression in wild-type (WT) and shRNA knockdown (KD) HeLa cells was detected using Western blotting. β -Tubulin served as a loading control. The blots were incubated with primary antibodies against GTF2F2 and β -Tubulin, respectively, followed by incubating with HRP-conjugated goat anti-rabbit secondary antibody. Images were developed using FeQ™ ECL Substrate Kit.

SUPPORT

SUPPORT@GENUINBIOTECH.COM
TEL: +1-540-855-7041

ORDERS

SALES@GENUINBIOTECH.COM
FAX: +1-540-855-7041

WWW.GENUINBIOTECH.COM

Copyright ©2025 Genuin Biotechnologies LLC