

Human PCBP2 Knockdown Cell Line (WB-Validated)



Catalog #: C61182

Aliases

PCBP2; Poly(RC) Binding Protein 2; Poly(RC)-Binding Protein 2; HNRNPE2; HNRPE2; Heterogeneous Nuclear Ribonucleoprotein E2; Heterogenous Nuclear Ribonucleoprotein E2; Alpha-CP2; HnRNP-E2; HnRNP E2; Epididymis Secretory Sperm Binding Protein; HNRNP-E2

Background

Gene Name: PCBP2

NCBI Gene Entry: [5094](#)

Storage

Store at liquid nitrogen for 1 year.

Kit Components

1. Human PCBP2 Knockdown Cell Line (Wb-Validated)
2. Wild-type cell line

Parental Cell Line

Human cell line supplied by the client

Validation Methods

RT-qPCR, Western blotting (WB)

Shipping

Shipped on Dry Ice.

Instructions For Use

This knockdown cell line should be paired with wild-type cell line for use.

Note: This product is for research use only.

Validation Data

SUPPORT

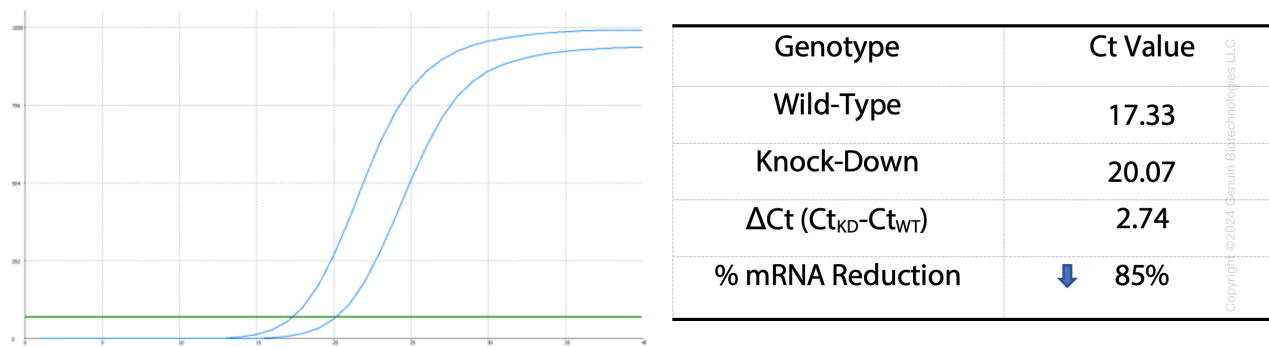
SUPPORT@GENUINBIOTECH.COM
TEL: +1-540-855-7041

ORDERS

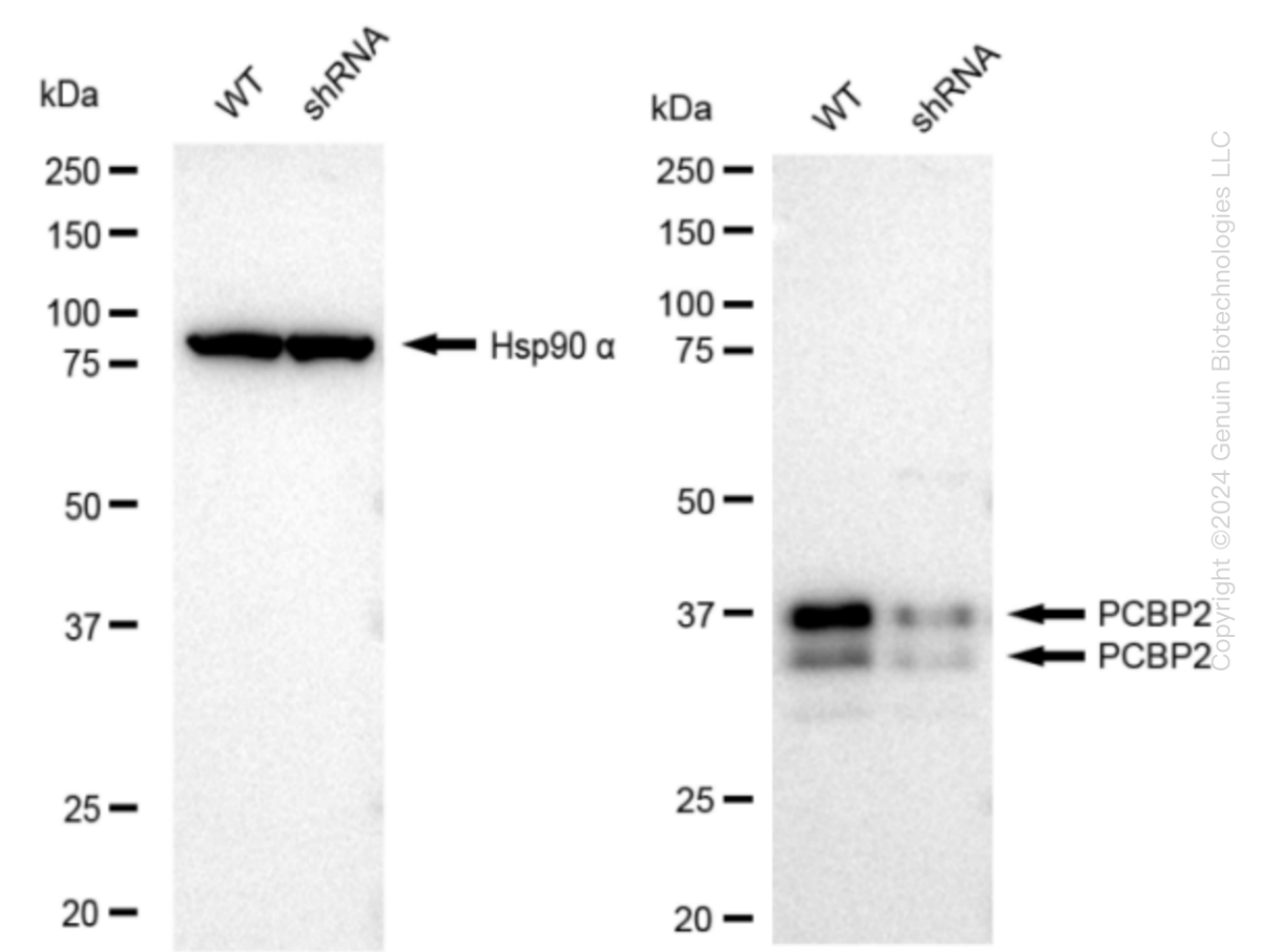
SALES@GENUINBIOTECH.COM
FAX: +1-540-855-7041

WWW.GENUINBIOTECH.COM

Human PCBP2 Knockdown Cell Line (WB-Validated)



RT-qPCR analysis. HeLa cells were infected with PCBP2-specific shRNA lentiviral particles, total RNA was extracted from wild-type and knockdown cells, RT-qPCR was performed using gene-specific primers. $\Delta Ct (Ct_{KD}-Ct_{WT})$ was used to calculate mRNA reduction (%) between wild-type and knockdown cells using the following formula: $(1-1/2^{\Delta Ct}) \times 100\%$.



Western blotting analysis. PCBP2 protein expression in wild-type (WT) and shRNA knockdown (KD) HeLa cells was detected using Western blotting. Hsp90 α served as a loading control. The

SUPPORT

SUPPORT@GENUINBIOTECH.COM
TEL: +1-540-855-7041

ORDERS

SALES@GENUINBIOTECH.COM
FAX: +1-540-855-7041

WWW.GENUINBIOTECH.COM

Human PCBP2 Knockdown Cell Line (WB-Validated)

PAGE 3

blots were incubated with primary antibodies (Cat#61182, 1:5,000) against PCBP2 and Hsp90 α , respectively, followed by incubating with HRP-conjugated goat anti-rabbit secondary antibody (Cat#201, 1:20,000). Images were developed using FeQ™ ECL Substrate Kit (Cat#226).

SUPPORT

SUPPORT@GENUINBIOTECH.COM
TEL: +1-540-855-7041

ORDERS

SALES@GENUINBIOTECH.COM
FAX: +1-540-855-7041

WWW.GENUINBIOTECH.COM