

Human GLI3 Knockdown Cell Line (WB-Validated)



Catalog #: C61185

Aliases

GLI Family Zinc Finger 3; PAP-A; PAPA1; PPDIV; PAPA; PAPB; ACLS; Glioma-Associated Oncogene Family Zinc Finger 3; GLI-Kruppel Family Member GLI3; Transcriptional Activator GLI3; Zinc Finger Protein GLI3; Oncogene GLI3; GLI3-190; GLI3FL; GCPS; PHS; Greig Cephalopolysyndactyly Syndrome; GLI3 Full-Length Protein; GLI3 Form Of 190 KDa; DNA-Binding Protein

Background

Gene Name: GLI3

NCBI Gene Entry: [2737](#)

Storage

Store at liquid nitrogen for 1 year.

Kit Components

1. Human GLI3 Knockdown Cell Line (Wb-Validated)
2. Wild-type cell line

Parental Cell Line

Human cell line supplied by the client

Validation Methods

RT-qPCR, Western blotting (WB)

Shipping

Shipped on Dry Ice.

Instructions For Use

This knockdown cell line should be paired with wild-type cell line for use.

Note: This product is for research use only.

Validation Data

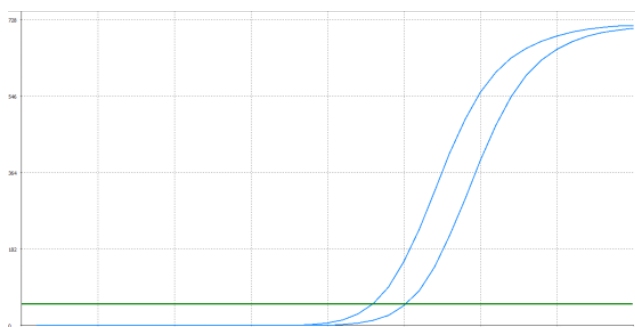
SUPPORT

SUPPORT@GENUINBIOTECH.COM
TEL: +1-540-855-7041

ORDERS

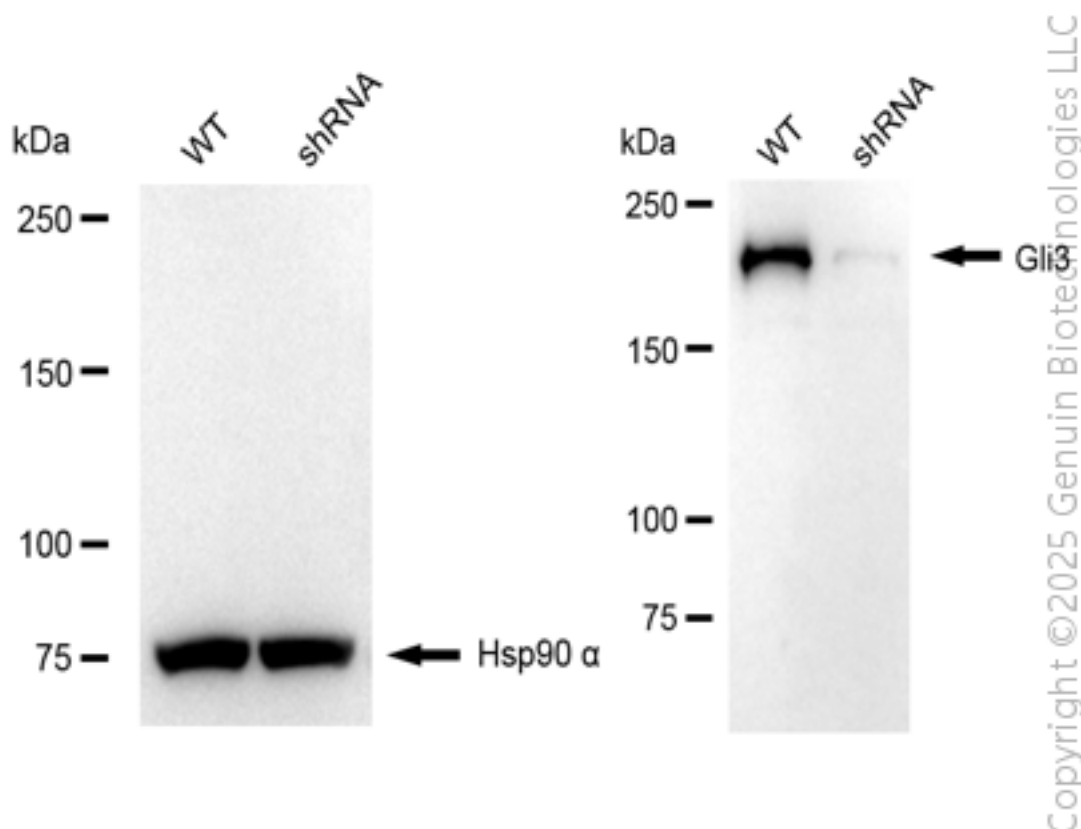
SALES@GENUINBIOTECH.COM
FAX: +1-540-855-7041

WWW.GENUINBIOTECH.COM



Genotype	Ct Value
Wild-Type	22.96
Knock-Down	25.10
ΔCt (CtKD-CtWT)	2.14
% mRNA Reduction	77%

RT-qPCR analysis. HT-1080 cells were infected with GLI3-specific shRNA lentiviral particles, total RNA was extracted from wild-type and knockdown cells, RT-qPCR was performed using gene-specific primers. ΔCt (CtKD-CtWT) was used to calculate mRNA reduction (%) between wild-type and knockdown cells using the following formula: $(1 - 1/2^{\Delta Ct}) \times 100\%$.



Western blotting analysis. GLI3 protein expression in wild-type (WT) and shRNA knockdown (KD) HT-1080 cells was detected using Western blotting. Hsp90 α served as a loading control. The blots were incubated with primary antibodies against GLI3 and Hsp90 α , respectively, followed by incubating with HRP-conjugated goat anti-rabbit secondary antibody. Images were developed

Human GLI3 Knockdown Cell Line (WB-Validated)

PAGE 3

using FeQ™ ECL Substrate Kit.

SUPPORT

SUPPORT@GENUINBIOTECH.COM
TEL: +1-540-855-7041

ORDERS

SALES@GENUINBIOTECH.COM
FAX: +1-540-855-7041

WWW.GENUINBIOTECH.COM