

# Human NDUFS3 Knockdown Cell Line (WB-Validated)



**Catalog #: C61193**

## Aliases

NDUFS3; NADH:Ubiquinone Oxidoreductase Core Subunit S3; NADH Dehydrogenase [Ubiquinone] Iron-Sulfur Protein 3, Mitochondrial; CI-30; NADH Dehydrogenase (Ubiquinone) Fe-S Protein 3, 30kDa (NADH-Coenzyme Q Reductase); NADH-Ubiquinone Oxidoreductase 30 KDa Subunit; Complex I 30kDa Subunit; Complex I-30kD; CI-30kD; NADH Dehydrogenase (Ubiquinone) Fe-S Protein 3 (30kD) (NADH-Coenzyme Q Reductase); NADH Dehydrogenase-Ubiquinone 30 KDa Subunit; EC 1.6.99.5; EC 7.1.1.2; MC1DN8

## Background

Gene Name: NDUFS3  
NCBI Gene Entry: [4722](#)

## Storage

Store at liquid nitrogen for 1 year.

## Kit Components

1. Human NDUFS3 Knockdown Cell Line (Wb-Validated)
2. Wild-type cell line

## Parental Cell Line

Human cell line supplied by the client

## Validation Methods

RT-qPCR, Western blotting (WB)

## Shipping

Shipped on Dry Ice.

## Instructions For Use

This knockdown cell line should be paired with wild-type cell line for use.

**Note:** This product is for research use only.

## Validation Data

---

### SUPPORT

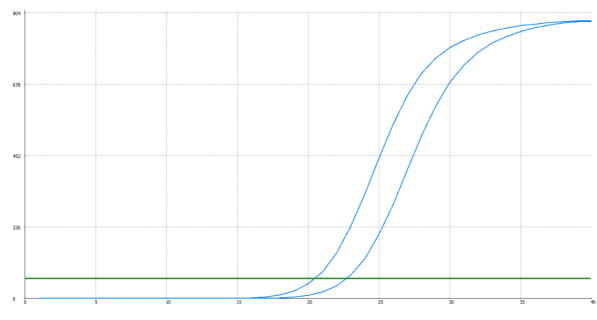
SUPPORT@GENUINBIOTECH.COM  
TEL: +1-540-855-7041

### ORDERS

SALES@GENUINBIOTECH.COM  
FAX: +1-540-855-7041

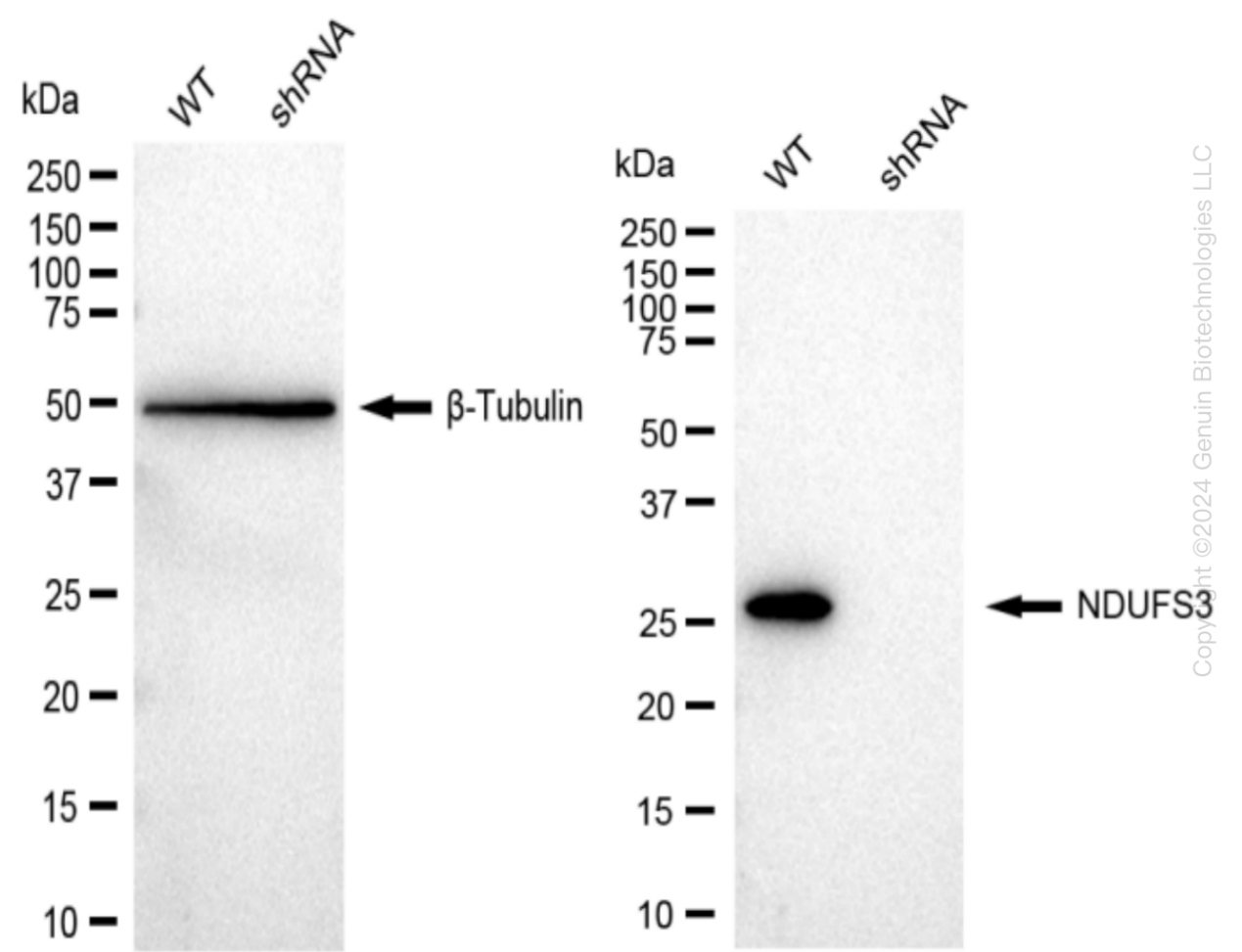
[WWW.GENUINBIOTECH.COM](http://WWW.GENUINBIOTECH.COM)

Human NDUFS3 Knockdown Cell Line (WB-Validated)



Genotype	Ct Value
Wild-Type	20.45
Knock-Down	22.68
$\Delta Ct (Ct_{KD}-Ct_{WT})$	2.23
% mRNA Reduction	↓ 79%

RT-qPCR analysis. HeLa cells were infected with NDUFS3-specific shRNA lentiviral particles, total RNA was extracted from wild-type and knockdown cells, RT-qPCR was performed using gene-specific primers.  $\Delta Ct (Ct_{KD}-Ct_{WT})$  was used to calculate mRNA reduction (%) between wild-type and knockdown cells using the following formula:  $(1-1/2^{\Delta Ct}) \times 100\%$ .



Western blotting analysis. NDUFS3 protein expression in wild-type (WT) and shRNA knockdown (KD) HeLa cells was detected using Western blotting.  $\beta$ -Tubulin served as a loading control. The blots were incubated with primary antibodies (Cat#61193, 1:5,000) against NDUFS3 and  $\beta$ -

SUPPORT

SUPPORT@GENUINBIOTECH.COM  
TEL: +1-540-855-7041

ORDERS

SALES@GENUINBIOTECH.COM  
FAX: +1-540-855-7041

WWW.GENUINBIOTECH.COM

## **Human NDUFS3 Knockdown Cell Line (WB-Validated)**

PAGE 3

Tubulin, respectively, followed by incubating with HRP-conjugated goat anti-rabbit secondary antibody (Cat#201, 1:20,000). Images were developed using FeQ™ ECL Substrate Kit (Cat#226).

---

### **SUPPORT**

SUPPORT@GENUINBIOTECH.COM  
TEL: +1-540-855-7041

### **ORDERS**

SALES@GENUINBIOTECH.COM  
FAX: +1-540-855-7041

**WWW.GENUINBIOTECH.COM**