

Human PSMB10 Knockdown Cell Line (WB-Validated)



Catalog #: C61197

Aliases

PSMB10; Proteasome 20S Subunit Beta 10; LMP10; MECL1; Proteasome (Prosome, Macropain) Subunit, Beta Type, 10; Multicatalytic Endopeptidase Complex Subunit MECL1; Proteasome Subunit Beta Type-10; Low Molecular Mass Protein 10; Proteasome Subunit Beta 10; Proteasome Subunit Beta-2i; Macropain Subunit MECL1; Proteasome MECL1; EC 3.4.25.1; MGC1665; Beta2i; Proteasome Catalytic Subunit 2i; Proteasome Subunit Beta 7i; Proteasome Subunit Beta2i; Proteasome Subunit MECL1; Proteasome Subunit B2i; PRAAS5; BETA2I

Background

Gene Name: PSMB10

NCBI Gene Entry: [5699](#)

Storage

Store at liquid nitrogen for 1 year.

Kit Components

1. Human PSMB10 Knockdown Cell Line (Wb-Validated)
2. Wild-type cell line

Parental Cell Line

Human cell line supplied by the client

Validation Methods

RT-qPCR, Western blotting (WB)

Shipping

Shipped on Dry Ice.

Instructions For Use

This knockdown cell line should be paired with wild-type cell line for use.

Note: This product is for research use only.

Validation Data

SUPPORT

SUPPORT@GENUINBIOTECH.COM
TEL: +1-540-855-7041

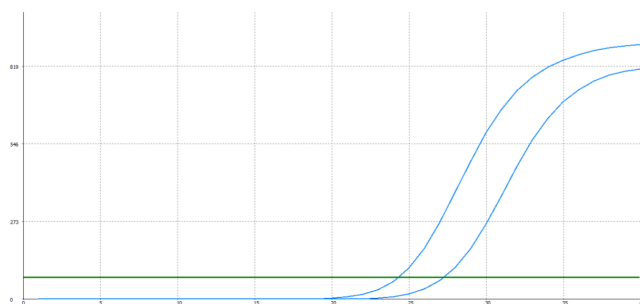
ORDERS

SALES@GENUINBIOTECH.COM
FAX: +1-540-855-7041

WWW.GENUINBIOTECH.COM

Human PSMB10 Knockdown Cell Line (WB-Validated)

PAGE 2



Genotype	Ct Value
Wild-Type	24.02
Knock-Down	26.73
$\Delta Ct (Ct_{KD}-Ct_{WT})$	2.71
% mRNA Reduction	↓ 85%

Copyright ©2024 Genuin Biotechnologies Ltd

RT-qPCR analysis. HeLa cells were infected with PSMB10-specific shRNA lentiviral particles, total RNA was extracted from wild-type and knockdown cells, RT-qPCR was performed using gene-specific primers. $\Delta Ct (Ct_{KD}-Ct_{WT})$ was used to calculate mRNA reduction (%) between wild-type and knockdown cells using the following formula: $(1-1/2^{\Delta Ct}) \times 100\%$.

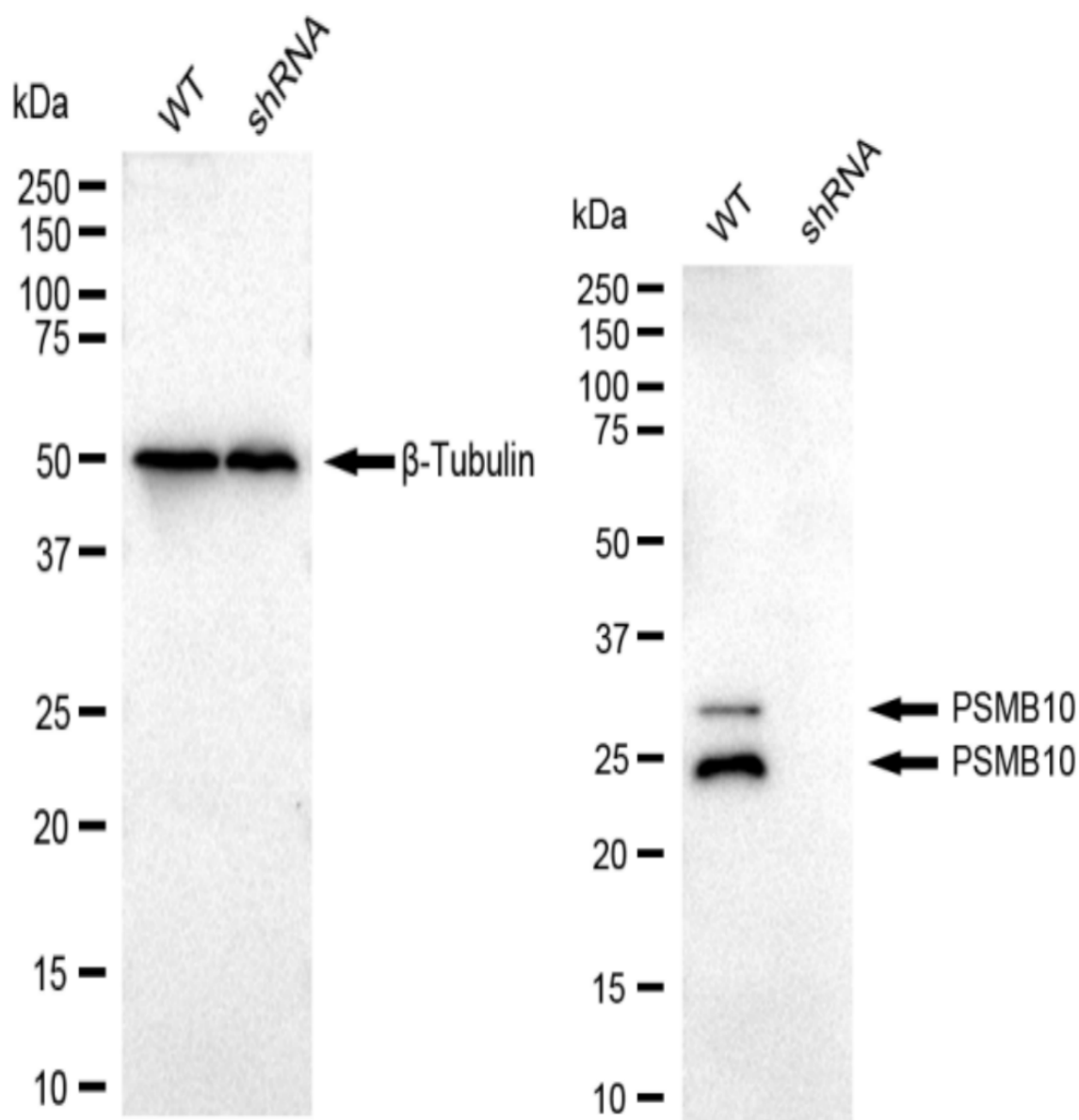
SUPPORT

SUPPORT@GENUINBIOTECH.COM
TEL: +1-540-855-7041

ORDERS

SALES@GENUINBIOTECH.COM
FAX: +1-540-855-7041

WWW.GENUINBIOTECH.COM



Copyright ©2024 Genuin Biotechnologies LLC

Western blotting analysis. PSMB10 protein expression in wild-type (WT) and shRNA knockdown (KD) HeLa cells was detected using Western blotting. β-Tubulin served as a loading control. The blots were incubated with primary antibodies (Cat#61197, 1:5,000) against PSMB10 and β-Tubulin, respectively, followed by incubating with HRP-conjugated goat anti-rabbit secondary antibody (Cat#201, 1:20,000). Images were developed using FeQ™ ECL Substrate Kit (Cat#226).