

# Human IMPDH2 Knockdown Cell Line (WB-Validated)



**Catalog #: C61198**

## Aliases

IMPDH2; Inosine Monophosphate Dehydrogenase 2; IMP (Inosine 5'-Monophosphate) Dehydrogenase 2; Inosine-5'-Monophosphate Dehydrogenase Type II; Inosine-5'-Monophosphate Dehydrogenase 2; IMP Dehydrogenase II; EC 1.1.1.205; IMPDH-II; IMPDH 2; IMPD 2; IMPD2; IMP (Inosine Monophosphate) Dehydrogenase 2; Inosine Monophosphate Dehydrogenase Type II; Epididymis Secretory Sperm Binding Protein; Inosine 5' Phosphate Dehydrogenase 2; IMP Dehydrogenase 2; IMP Oxireductase 2

## Background

Gene Name: IMPDH2

NCBI Gene Entry: [3615](#)

## Storage

Store at liquid nitrogen for 1 year.

## Kit Components

1. Human IMPDH2 Knockdown Cell Line (Wb-Validated)
2. Wild-type cell line

## Parental Cell Line

Human cell line supplied by the client

## Validation Methods

RT-qPCR, Western blotting (WB)

## Shipping

Shipped on Dry Ice.

## Instructions For Use

This knockdown cell line should be paired with wild-type cell line for use.

**Note:** This product is for research use only.

## Validation Data

---

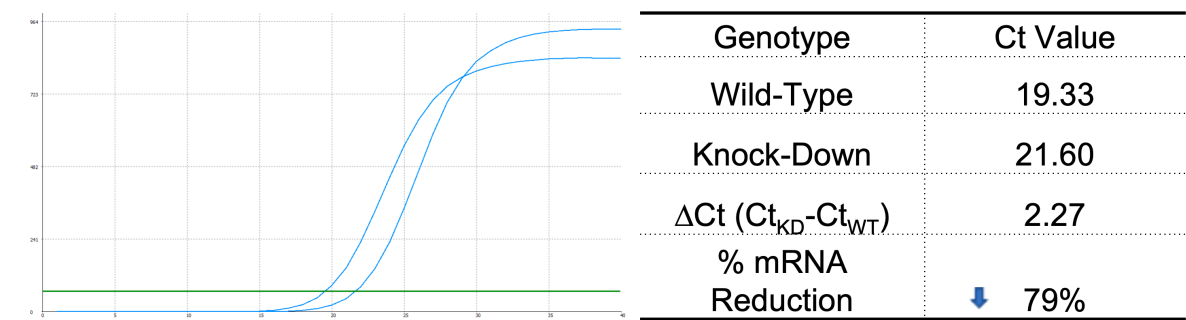
### SUPPORT

SUPPORT@GENUINBIOTECH.COM  
TEL: +1-540-855-7041

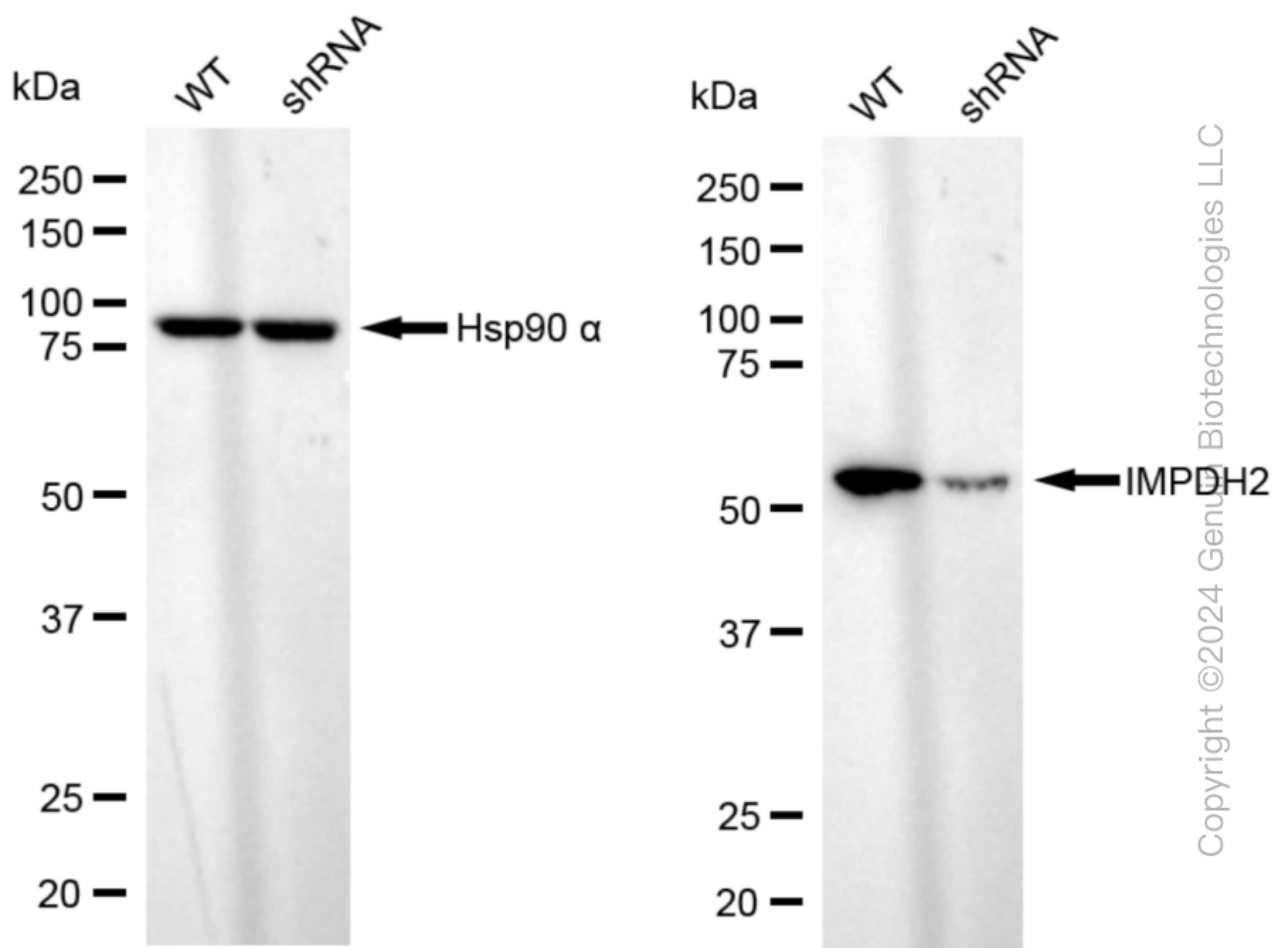
### ORDERS

SALES@GENUINBIOTECH.COM  
FAX: +1-540-855-7041

[WWW.GENUINBIOTECH.COM](http://WWW.GENUINBIOTECH.COM)



RT-qPCR analysis. HeLa cells were infected with IMPDH2-specific shRNA lentiviral particles, total RNA was extracted from wild-type and knockdown cells, RT-qPCR was performed using gene-specific primers.  $\Delta Ct (Ct_{KD} - Ct_{WT})$  was used to calculate mRNA reduction (%) between wild-type and knockdown cells using the following formula:  $(1 - 1/2^{\Delta Ct}) \times 100\%$ .



Western blotting analysis. IMPDH2 protein expression in wild-type (WT) and shRNA knockdown (KD) HeLa cells was detected using Western blotting. Hsp90 α served as a loading control. The blots were incubated with primary antibodies against IMPDH2 and Hsp90 α, respectively, followed by incubating with HRP-conjugated goat anti-rabbit secondary antibody. Images were

## **Human IMPDH2 Knockdown Cell Line (WB-Validated)**

PAGE 3

developed using FeQ™ ECL Substrate Kit.

---

### **SUPPORT**

SUPPORT@GENUINBIOTECH.COM  
TEL: +1-540-855-7041

### **ORDERS**

SALES@GENUINBIOTECH.COM  
FAX:+1-540-855-7041

**WWW.GENUINBIOTECH.COM**