

Human NME1 Knockdown Cell Line (WB-Validated)



Catalog #: C61203

Aliases

NME1; NME/NM23 Nucleoside Diphosphate Kinase 1; NM23-H1; NDPKA; NM23; Non-Metastatic Cells 1, Protein (NM23A) Expressed In; Tumor Metastatic Process-Associated Protein; Metastasis Inhibition Factor Nm23; Nucleoside Diphosphate Kinase A; Granzyme A-Activated DNase; NDP Kinase A; EC 2.7.4.6; GAAD; Epididymis Secretory Sperm Binding Protein; NDPK-A; NDK;NDKA; AWD; NBS; NB

Background

Gene Name: NME1

NCBI Gene Entry: [4830](#)

Storage

Store at liquid nitrogen for 1 year.

Kit Components

1. Human NME1 Knockdown Cell Line (Wb-Validated)
2. Wild-type cell line

Parental Cell Line

Human cell line supplied by the client

Validation Methods

RT-qPCR, Western blotting (WB)

Shipping

Shipped on Dry Ice.

Instructions For Use

This knockdown cell line should be paired with wild-type cell line for use.

Note: This product is for research use only.

Validation Data

SUPPORT

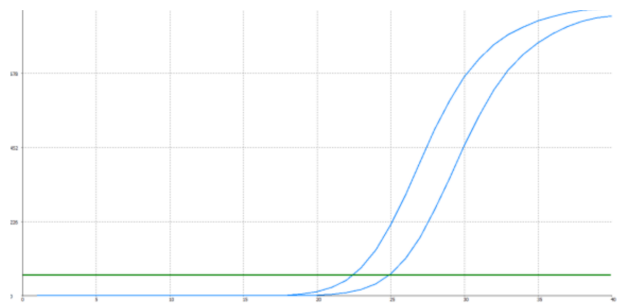
SUPPORT@GENUINBIOTECH.COM
TEL: +1-540-855-7041

ORDERS

SALES@GENUINBIOTECH.COM
FAX: +1-540-855-7041

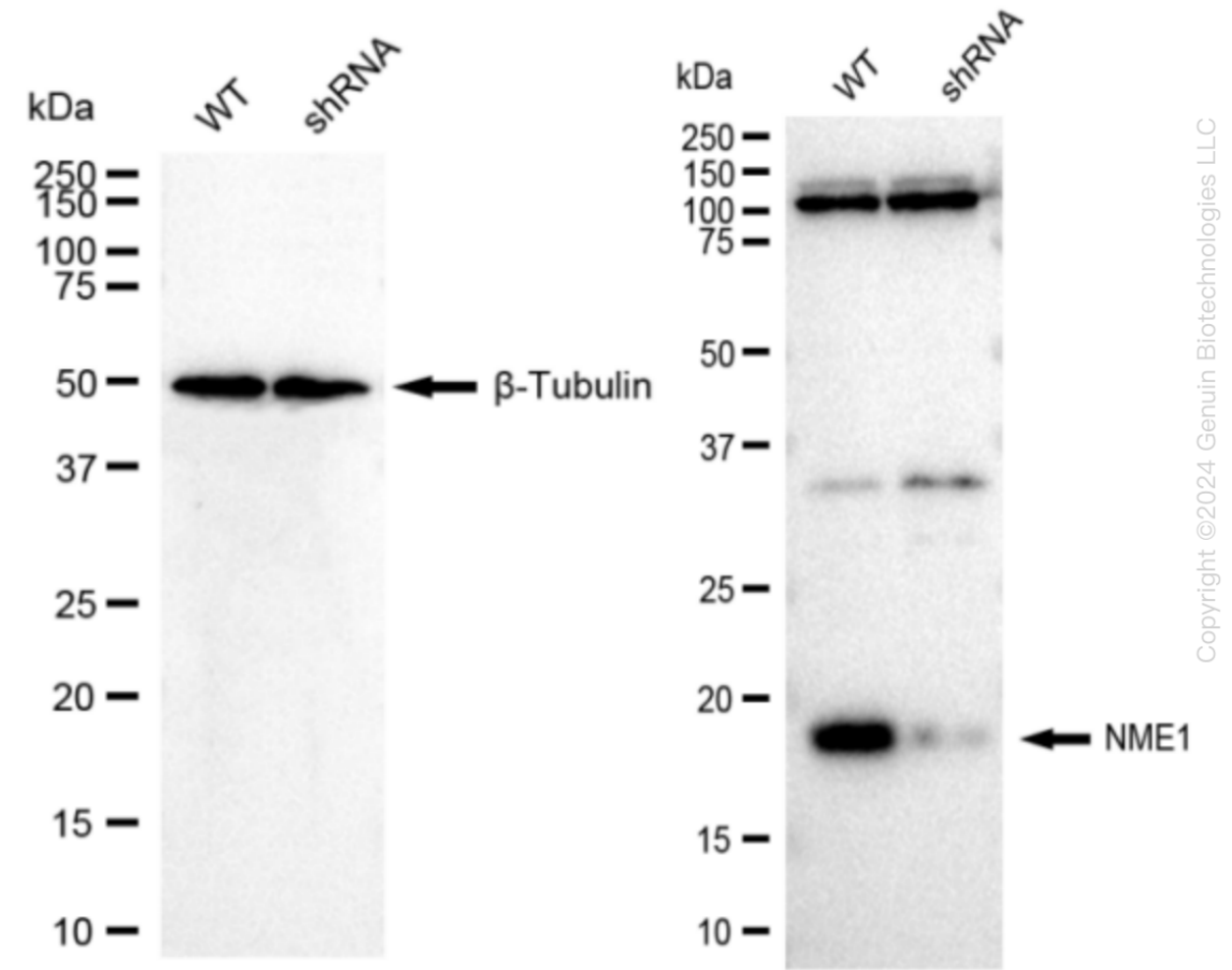
WWW.GENUINBIOTECH.COM

Human NME1 Knockdown Cell Line (WB-Validated)



Genotype	Ct Value
Wild-Type	22.39
Knock-Down	24.8
$\Delta Ct (Ct_{KD}-Ct_{WT})$	2.41
% mRNA Reduction	↓ 82%

RT-qPCR analysis. HeLa cells were infected with NME1-specific shRNA lentiviral particles, total RNA was extracted from wild-type and knockdown cells, RT-qPCR was performed using gene-specific primers. $\Delta Ct (Ct_{KD}-Ct_{WT})$ was used to calculate mRNA reduction (%) between wild-type and knockdown cells using the following formula: $(1-1/2^{\Delta Ct}) \times 100\%$.



SUPPORT

SUPPORT@GENUINBIOTECH.COM
TEL: +1-540-855-7041

ORDERS

SALES@GENUINBIOTECH.COM
FAX: +1-540-855-7041

WWW.GENUINBIOTECH.COM

Human NME1 Knockdown Cell Line (WB-Validated)

PAGE 3

(KD) HeLa cells was detected using Western blotting. β -Tubulin served as a loading control. The blots were incubated with primary antibodies (Cat#61200, 1:5,000) against NME1 and β -Tubulin, respectively, followed by incubating with HRP-conjugated goat anti-rabbit secondary antibody (Cat#201, 1:20,000). Images were developed using FeQ™ ECL Substrate Kit (Cat#226).

SUPPORT

SUPPORT@GENUINBIOTECH.COM
TEL: +1-540-855-7041

ORDERS

SALES@GENUINBIOTECH.COM
FAX: +1-540-855-7041

WWW.GENUINBIOTECH.COM