

Human PRKCB Knockdown Cell Line (WB-Validated)



Catalog #: C61209

Aliases

Protein Kinase C Beta; PRKCB1; PKCB; Protein Kinase C Beta Type; EC 2.7.11.13; PKC-Beta; PRKCB2; PKC-B; Protein Kinase C, Beta 1 Polypeptide; Protein Kinase C, Beta 1; Protein Kinase C, Beta; EC 2.7.11; PKCI(2); PKCbeta; PKC β

Background

Gene Name: PRKCB

NCBI Gene Entry: [5579](#)

Storage

Store at liquid nitrogen for 1 year.

Kit Components

1. Human PRKCB Knockdown Cell Line (Wb-Validated)
2. Wild-type cell line

Parental Cell Line

Human cell line supplied by the client

Validation Methods

RT-qPCR, Western blotting (WB)

Shipping

Shipped on Dry Ice.

Instructions For Use

This knockdown cell line should be paired with wild-type cell line for use.

Note: This product is for research use only.

Validation Data

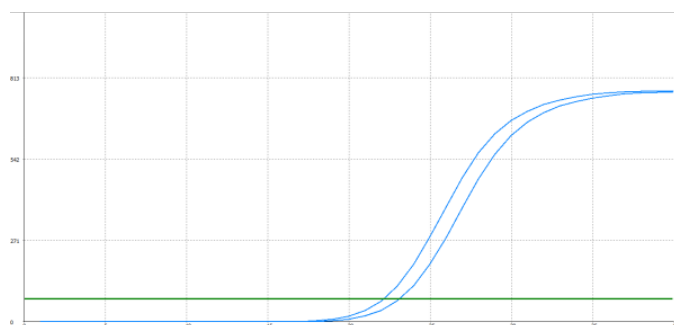
SUPPORT

SUPPORT@GENUINBIOTECH.COM
TEL: +1-540-855-7041

ORDERS

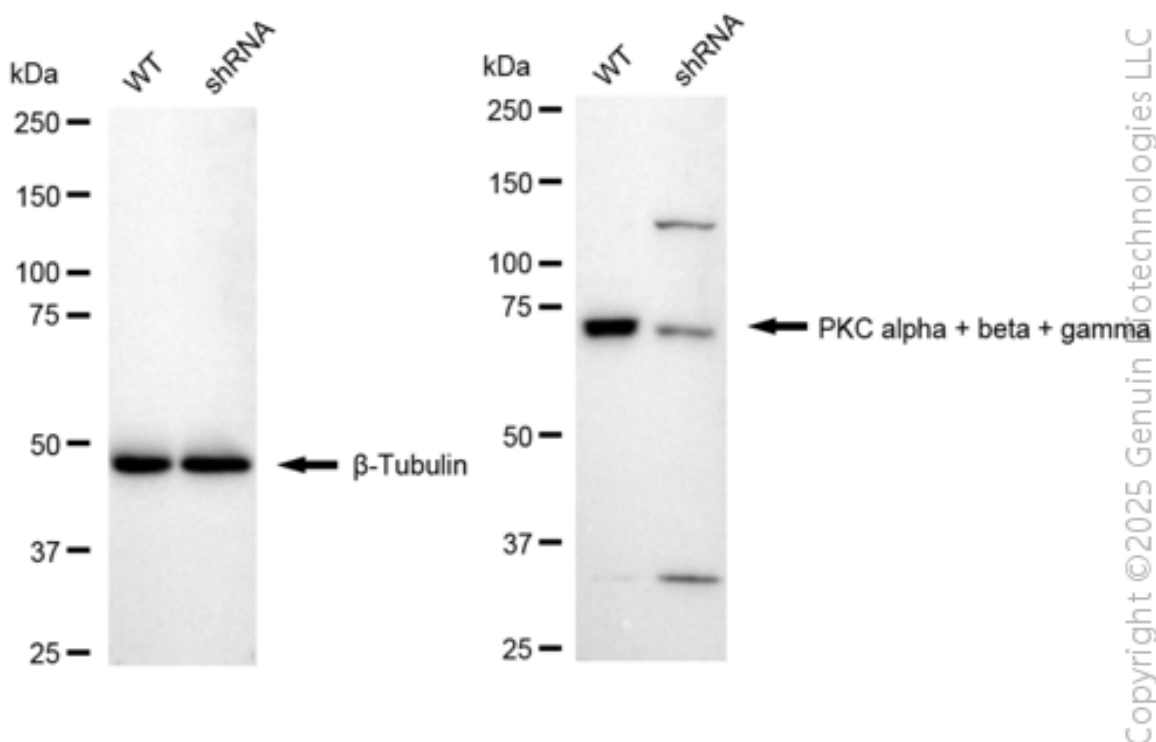
SALES@GENUINBIOTECH.COM
FAX: +1-540-855-7041

WWW.GENUINBIOTECH.COM



| Genotype | Ct Value |
|-------------------------|----------|
| Wild-Type | 21.55 |
| Knock-Down | 22.52 |
| ΔCt (CtKD-CtWT) | 0.97 |
| % mRNA Reduction | 49% |

RT-qPCR analysis. HeLa cells were infected with PRKCB-specific shRNA lentiviral particles, total RNA was extracted from wild-type and knockdown cells, RT-qPCR was performed using gene-specific primers. ΔCt (CtKD-CtWT) was used to calculate mRNA reduction (%) between wild-type and knockdown cells using the following formula: $(1 - 1/2^{\Delta Ct}) \times 100\%$.



Western blotting analysis. PRKCB protein expression in wild-type (WT) and shRNA knockdown (KD) HeLa cells was detected using Western blotting. β -Tubulin served as a loading control. The blots were incubated with primary antibodies against PRKCB and β -Tubulin, respectively, followed by incubating with HRP-conjugated goat anti-rabbit secondary antibody. Images were developed using FeQ™ ECL Substrate Kit.