

Human TCEA1 Knockdown Cell Line (WB-Validated)



Catalog #: C61239

Aliases

TCEA1; Transcription Elongation Factor A1; TFIIS; GTF2S; TF2S; SII; Transcription Elongation Factor S-II Protein 1; Transcription Elongation Factor A Protein 1; Transcription Elongation Factor A (SII), 1; Transcription Elongation Factor TFIIS.O; Transcription Factor IIS; TCEA; Epididymis Secretory Sperm Binding Protein

Background

Gene Name: TCEA1

NCBI Gene Entry: [6917](#)

Storage

Store at liquid nitrogen for 1 year.

Kit Components

1. Human TCEA1 Knockdown Cell Line (Wb-Validated)
2. Wild-type cell line

Parental Cell Line

Human cell line supplied by the client

Validation Methods

RT-qPCR, Western blotting (WB)

Shipping

Shipped on Dry Ice.

Instructions For Use

This knockdown cell line should be paired with wild-type cell line for use.

Note: This product is for research use only.

Validation Data

SUPPORT

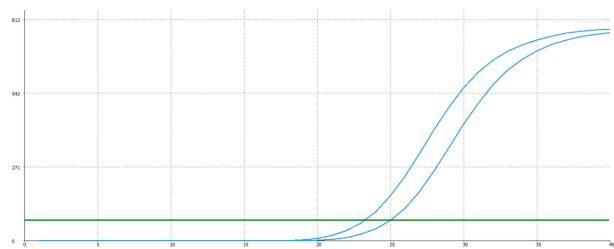
SUPPORT@GENUINBIOTECH.COM
TEL: +1-540-855-7041

ORDERS

SALES@GENUINBIOTECH.COM
FAX: +1-540-855-7041

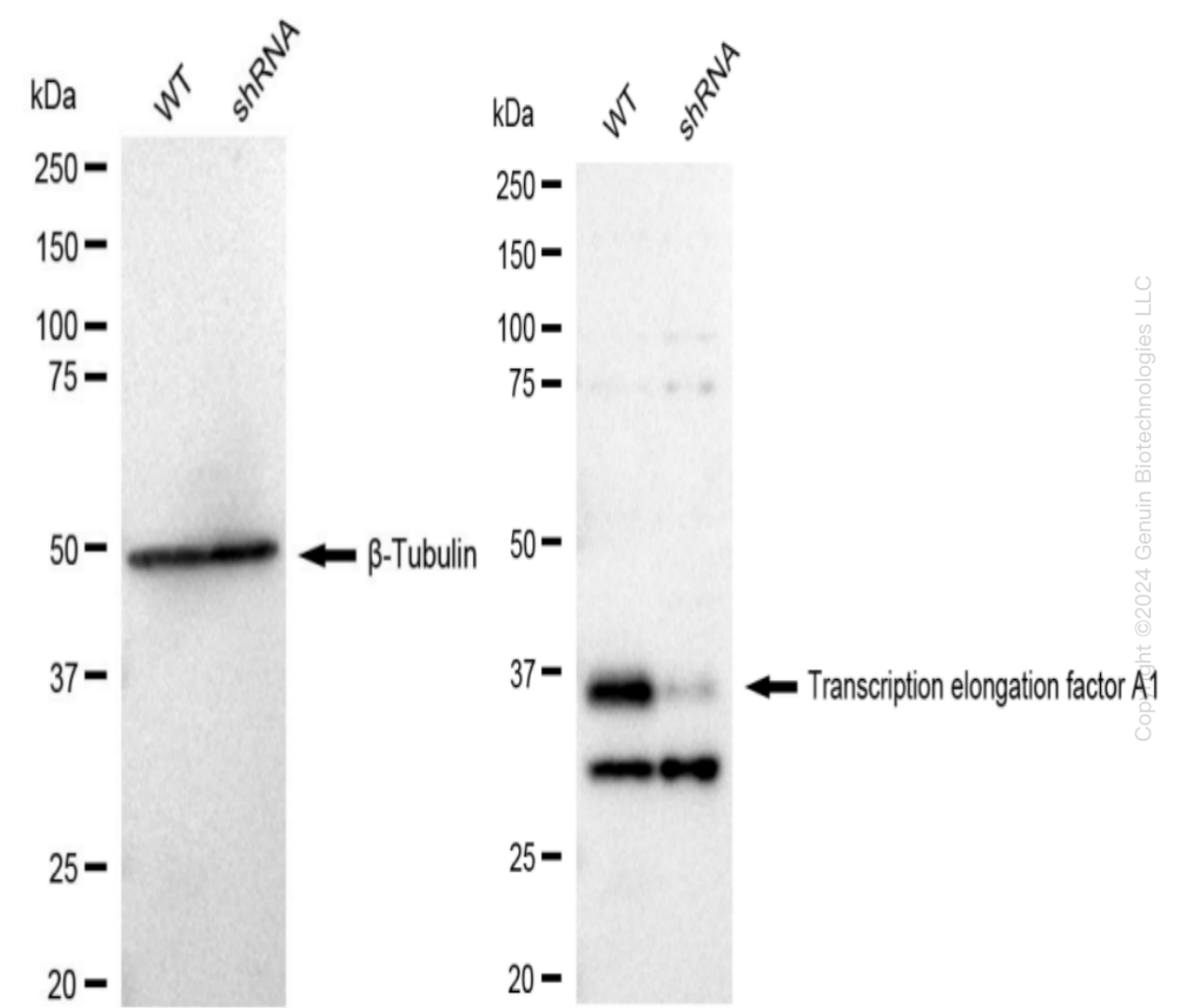
WWW.GENUINBIOTECH.COM

Human TCEA1 Knockdown Cell Line (WB-Validated)



Genotype	Ct Value
Wild-Type	22.64
Knock-Down	24.34
ΔCt ($Ct_{KD}-Ct_{WT}$)	1.70
% mRNA Reduction	↓ 69%

RT-qPCR analysis. HeLa cells were infected with TCEA1-specific shRNA lentiviral particles, total RNA was extracted from wild-type and knockdown cells, RT-qPCR was performed using gene-specific primers. ΔCt ($Ct_{KD}-Ct_{WT}$) was used to calculate mRNA reduction (%) between wild-type and knockdown cells using the following formula: $(1-1/2^{\Delta Ct}) \times 100\%$.



Western blotting analysis. TCEA1 protein expression in wild-type (WT) and shRNA knockdown (KD) HeLa cells was detected using Western blotting. β -Tubulin served as a loading control. The

SUPPORT

SUPPORT@GENUINBIOTECH.COM
TEL: +1-540-855-7041

ORDERS

SALES@GENUINBIOTECH.COM
FAX: +1-540-855-7041

WWW.GENUINBIOTECH.COM

Human TCEA1 Knockdown Cell Line (WB-Validated)

PAGE 3

blots were incubated with primary antibodies against TCEA1 and β -Tubulin, respectively, followed by incubating with HRP-conjugated goat anti-rabbit secondary antibody. Images were developed using FeQ™ ECL Substrate Kit.

SUPPORT

SUPPORT@GENUINBIOTECH.COM
TEL: +1-540-855-7041

ORDERS

SALES@GENUINBIOTECH.COM
FAX: +1-540-855-7041

WWW.GENUINBIOTECH.COM