

Human STUB1 Knockdown Cell Line (WB-Validated)



Catalog #: C61243

Aliases

STUB1; STIP1 Homology And U-Box Containing Protein 1; CHIP; SDCCAG7; HSPABP2; NY-CO-7; UBOX1; Carboxy Terminus Of Hsp70-Interacting Protein ; RING-Type E3 Ubiquitin; Transferase CHIP; E3 Ubiquitin-Protein Ligase CHIP; CLL-Associated Antigen KW-8; Antigen NY-CO-7; STIP1 Homology And U-Box Containing Protein 1, E3 Ubiquitin Protein Ligase; Heat Shock Protein A Binding Protein 2 (C-Terminal); STIP1 Homology And U Box-Containing Protein 1; Serologically Defined Colon Cancer Antigen 7; EC 2.3.2.27; SCAR16; SCA48

Background

Gene Name: STUB1

NCBI Gene Entry: [10273](#)

Storage

Store at liquid nitrogen for 1 year.

Kit Components

1. Human STUB1 Knockdown Cell Line (Wb-Validated)
2. Wild-type cell line

Parental Cell Line

Human cell line supplied by the client

Validation Methods

RT-qPCR, Western blotting (WB)

Shipping

Shipped on Dry Ice.

Instructions For Use

This knockdown cell line should be paired with wild-type cell line for use.

Note: This product is for research use only.

Validation Data

SUPPORT

SUPPORT@GENUINBIOTECH.COM
TEL: +1-540-855-7041

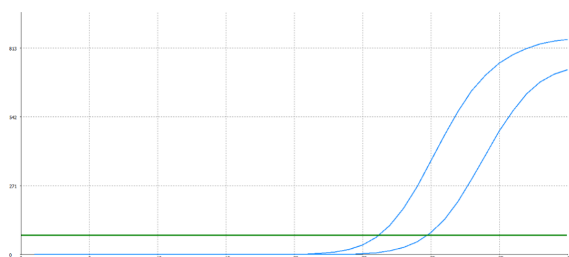
ORDERS

SALES@GENUINBIOTECH.COM
FAX: +1-540-855-7041

WWW.GENUINBIOTECH.COM

Human STUB1 Knockdown Cell Line (WB-Validated)

PAGE 2



Genotype	Ct Value
Wild-Type	25.74
Knock-Down	29.02
$\Delta Ct (Ct_{KD} - Ct_{WT})$	3.28
% mRNA Reduction	↓ 90%

Copyright ©2024 Genuin Biotechnologies LLC

RT-qPCR analysis. HeLa cells were infected with STUB1-specific shRNA lentiviral particles, total RNA was extracted from wild-type and knockdown cells, RT-qPCR was performed using gene-specific primers. $\Delta Ct (Ct_{KD} - Ct_{WT})$ was used to calculate mRNA reduction (%) between wild-type and knockdown cells using the following formula: $(1 - 1/2^{\Delta Ct}) \times 100\%$.

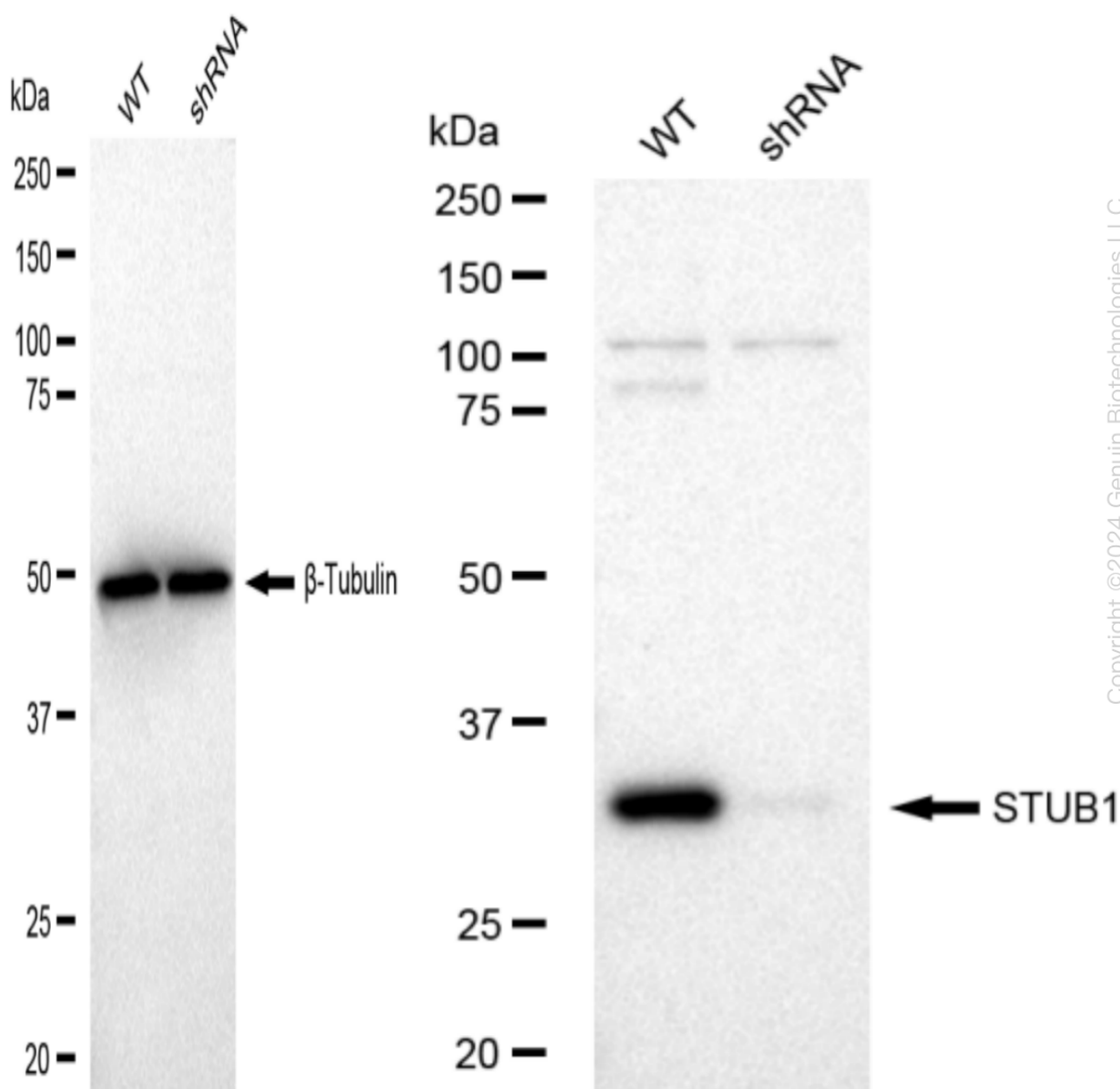
SUPPORT

SUPPORT@GENUINBIOTECH.COM
TEL: +1-540-855-7041

ORDERS

SALES@GENUINBIOTECH.COM
FAX: +1-540-855-7041

WWW.GENUINBIOTECH.COM



Western blotting analysis. STUB1 protein expression in wild-type (WT) and shRNA knockdown (KD) HeLa cells was detected using Western blotting. β -Tubulin served as a loading control. The blots were incubated with primary antibodies (Cat#61243, 1:5,000) against STUB1 and β -Tubulin, respectively, followed by incubating with HRP-conjugated goat anti-rabbit secondary antibody (Cat#201, 1:20,000). Images were developed using FeQ™ ECL Substrate Kit (Cat#226).