

Human KEAP1 Knockdown Cell Line (WB-Validated)



Catalog #: C61257

Aliases

KEAP1; Kelch Like ECH Associated Protein 1; KLHL19; INrf2; KIAA0132; Kelch-Like ECH-Associated Protein 1; Kelch-Like Family Member 19; Cytosolic Inhibitor Of Nrf2; Kelch-Like Protein 19; MGC10630; MGC20887; MGC1114; MGC4407; MGC9454; KEAP1 Delta C; INRF2

Background

Gene Name: KEAP1
NCBI Gene Entry: [9817](#)

Storage

Store at liquid nitrogen for 1 year.

Kit Components

1. Human KEAP1 Knockdown Cell Line (Wb-Validated)
2. Wild-type cell line

Parental Cell Line

Human cell line supplied by the client

Validation Methods

RT-qPCR, Western blotting (WB)

Shipping

Shipped on Dry Ice.

Instructions For Use

This knockdown cell line should be paired with wild-type cell line for use.

Note: This product is for research use only.

Validation Data

SUPPORT

SUPPORT@GENUINBIOTECH.COM
TEL: +1-540-855-7041

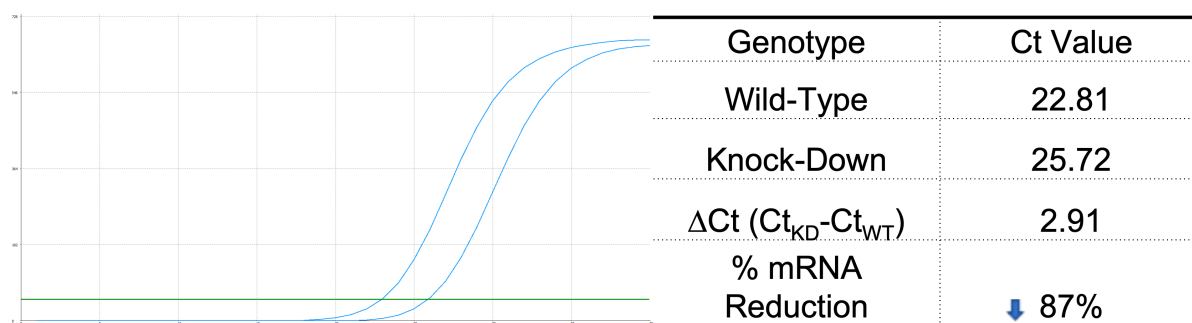
ORDERS

SALES@GENUINBIOTECH.COM
FAX: +1-540-855-7041

WWW.GENUINBIOTECH.COM

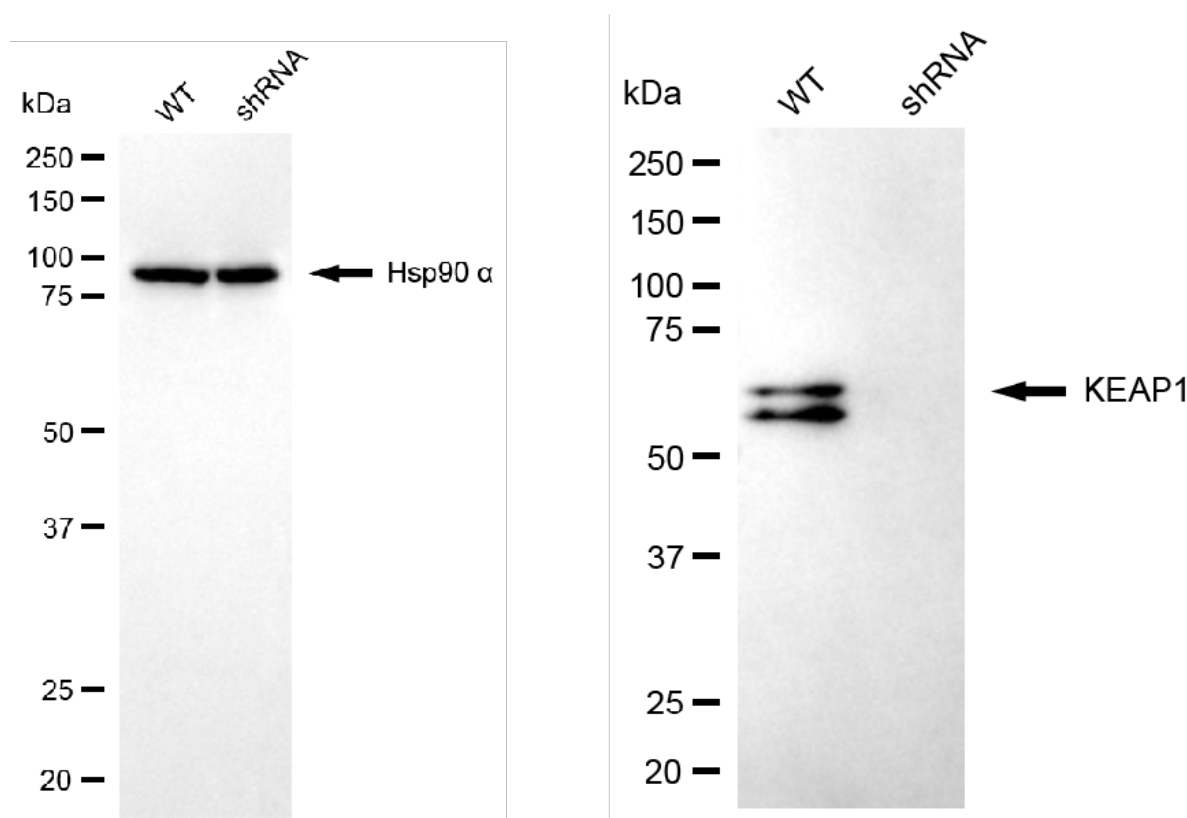
Human KEAP1 Knockdown Cell Line (WB-Validated)

PAGE 2



Copyright ©2025 Genuin Biotechnologies LLC

RT-qPCR analysis. HeLa cells were infected with KEAP1-specific shRNA lentiviral particles, total RNA was extracted from wild-type and knockdown cells, RT-qPCR was performed using gene-specific primers. $\Delta C_t (C_{t_{KD}} - C_{t_{WT}})$ was used to calculate mRNA reduction (%) between wild-type and knockdown cells using the following formula: $(1 - 1/2^{\Delta C_t}) \times 100\%$.



Copyright ©2025 Genuin Biotechnologies LLC

Western blotting analysis. KEAP1 protein expression in wild-type (WT) and shRNA knockdown (KD) HeLa cells was detected using Western blotting. Hsp90 α served as a loading control. The blots were incubated with primary antibodies against KEAP1 and Hsp90 α , respectively, followed by incubating with HRP-conjugated goat anti-mouse secondary antibody. Images were developed using FeQ™ ECL Substrate Kit.

SUPPORT

SUPPORT@GENUINBIOTECH.COM
TEL: +1-540-855-7041

ORDERS

SALES@GENUINBIOTECH.COM
FAX: +1-540-855-7041

WWW.GENUINBIOTECH.COM