

Human KAT7 Knockdown Cell Line (WB-Validated)



Catalog #: C61269

Aliases

KAT7; Lysine Acetyltransferase 7; HBO1; Histone Acetyltransferase Binding To ORC1; ZC2HC7; MYST2; HBOA; MOZ, YBF2/SAS3, SAS2 And TIP60 Protein; MYST Histone Acetyltransferase 2; Histone Acetyltransferase KAT7; K(Lysine) Acetyltransferase 7; Histone Acetyltransferase MYST2; EC 2.3.1.48; MYST-2; HBOa

Background

Gene Name: KAT7

NCBI Gene Entry: [11143](#)

Storage

Store at liquid nitrogen for 1 year.

Kit Components

1. Human KAT7 Knockdown Cell Line (Wb-Validated)
2. Wild-type cell line

Parental Cell Line

Human cell line supplied by the client

Validation Methods

RT-qPCR, Western blotting (WB)

Shipping

Shipped on Dry Ice.

Instructions For Use

This knockdown cell line should be paired with wild-type cell line for use.

Note: This product is for research use only.

Validation Data

SUPPORT

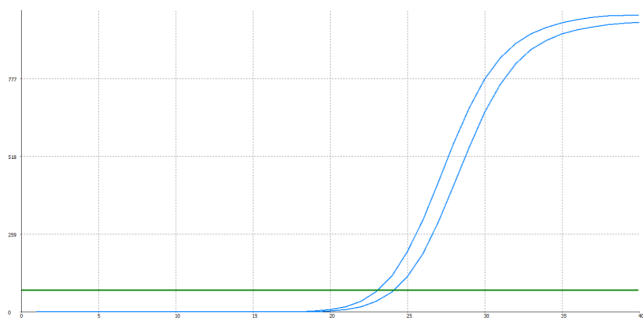
SUPPORT@GENUINBIOTECH.COM
TEL: +1-540-855-7041

ORDERS

SALES@GENUINBIOTECH.COM
FAX: +1-540-855-7041

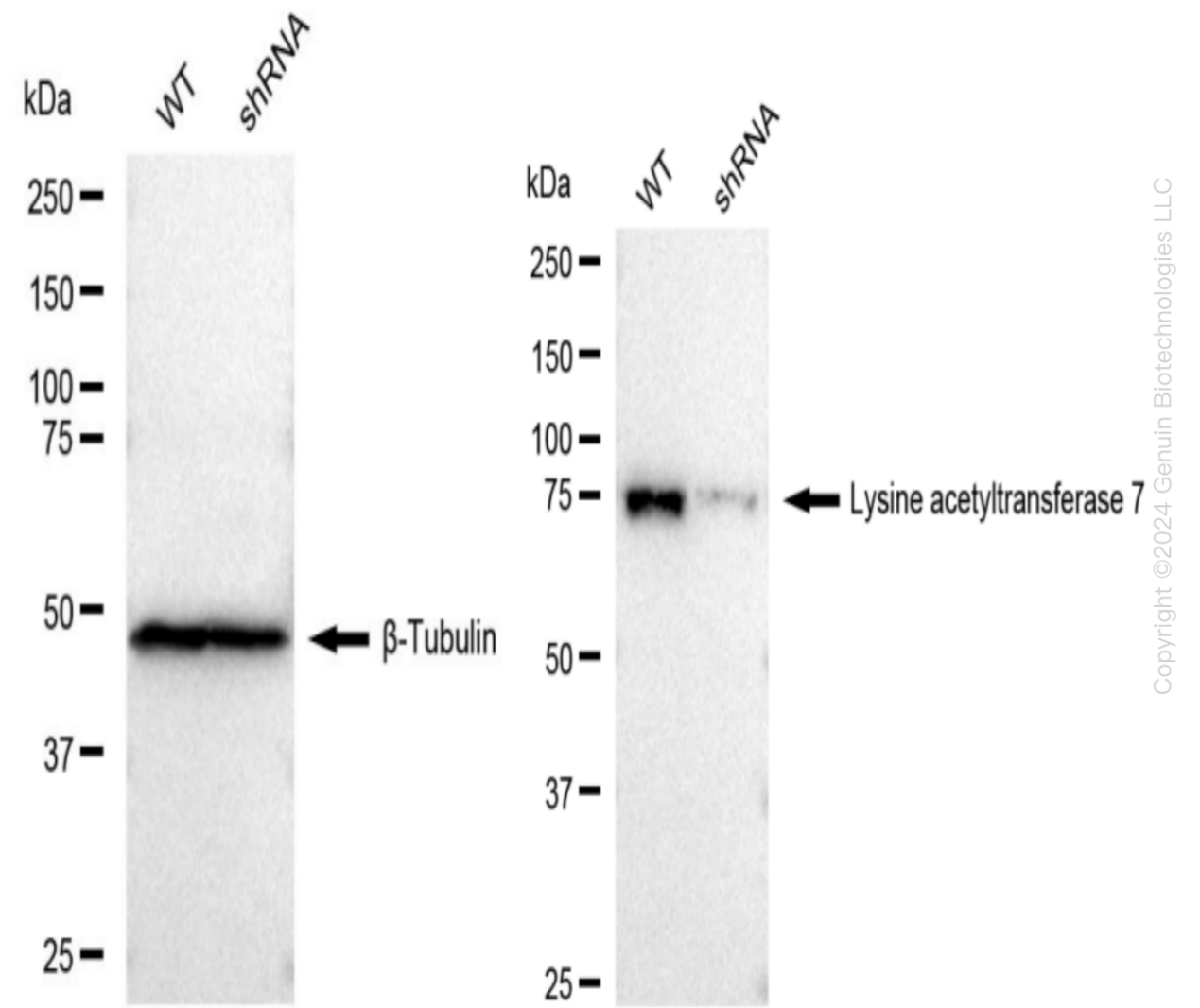
WWW.GENUINBIOTECH.COM

Human KAT7 Knockdown Cell Line (WB-Validated)



Genotype	Ct Value
Wild-Type	23.05
Knock-Down	24.04
$\Delta Ct (Ct_{KD}-Ct_{WT})$	0.99
% mRNA Reduction	↓ 50%

RT-qPCR analysis. HeLa cells were infected with KAT7-specific shRNA lentiviral particles, total RNA was extracted from wild-type and knockdown cells, RT-qPCR was performed using gene-specific primers. $\Delta Ct (Ct_{KD}-Ct_{WT})$ was used to calculate mRNA reduction (%) between wild-type and knockdown cells using the following formula: $(1-1/2^{\Delta Ct}) \times 100\%$.



Human KAT7 Knockdown Cell Line (WB-Validated)

PAGE 3

Western blotting analysis. KAT7 protein expression in wild-type (WT) and shRNA knockdown (KD) HeLa cells was detected using Western blotting. β -Tubulin served as a loading control. The blots were incubated with primary antibodies (Cat#61526, 1:5,000) against KAT7 and β -Tubulin, respectively, followed by incubating with HRP-conjugated goat anti-rabbit secondary antibody (Cat#201, 1:20,000). Images were developed using FeQ™ ECL Substrate Kit (Cat#226).

SUPPORT

SUPPORT@GENUINBIOTECH.COM
TEL: +1-540-855-7041

ORDERS

SALES@GENUINBIOTECH.COM
FAX: +1-540-855-7041

WWW.GENUINBIOTECH.COM