

Human PPP3CA Knockdown Cell Line (WB-Validated)



Catalog #: C61275

Aliases

PPP3CA; Protein Phosphatase 3 Catalytic Subunit Alpha; Calcineurin A Alpha; PPP2B; CALNA; CNA1; CAM-PRP Catalytic Subunit; EC 3.1.3.16; CNA Alpha; CALN; Protein Phosphatase 3 (Formerly 2B), Catalytic Subunit, Alpha Isoform (Calcineurin A Alpha); Serine/Threonine-Protein Phosphatase 2B Catalytic Subunit Alpha Isoform; Protein Phosphatase 3 (Formerly 2B), Catalytic Subunit, Alpha Isoform; Protein Phosphatase 2B, Catalytic Subunit, Alpha Isoform; Calmodulin-Dependent Calcineurin A Subunit Alpha Isoform; Protein Phosphatase 3, Catalytic Subunit, Alpha Isozyme; Protein Phosphatase 3 Catalytic Subunit Alpha Isozyme; ACCIID; CALNA1; IECEE1; DEE91; IECEE; CCN1; CNA

Background

Gene Name: PPP3CA
NCBI Gene Entry: [5530](#)

Storage

Store at liquid nitrogen for 1 year.

Kit Components

1. Human PPP3CA Knockdown Cell Line (Wb-Validated)
2. Wild-type cell line

Parental Cell Line

Human cell line supplied by the client

Validation Methods

RT-qPCR, Western blotting (WB)

Shipping

Shipped on Dry Ice.

Instructions For Use

This knockdown cell line should be paired with wild-type cell line for use.

Note: This product is for research use only.

Validation Data

SUPPORT

SUPPORT@GENUINBIOTECH.COM
TEL: +1-540-855-7041

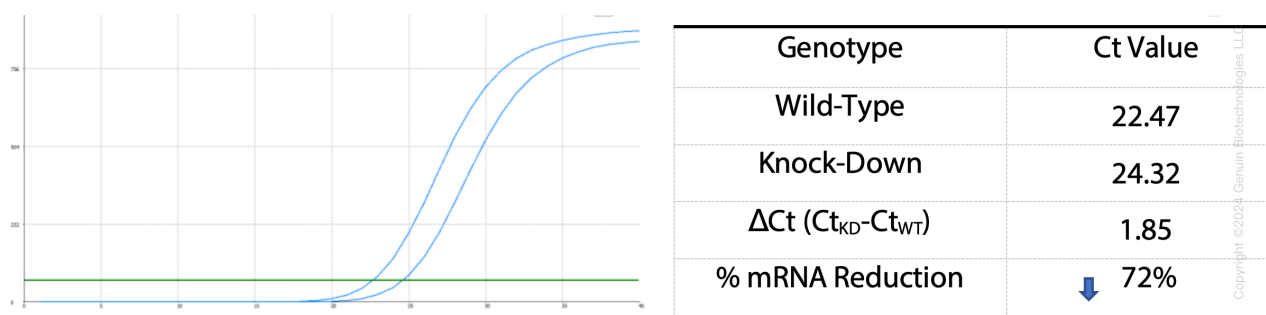
ORDERS

SALES@GENUINBIOTECH.COM
FAX: +1-540-855-7041

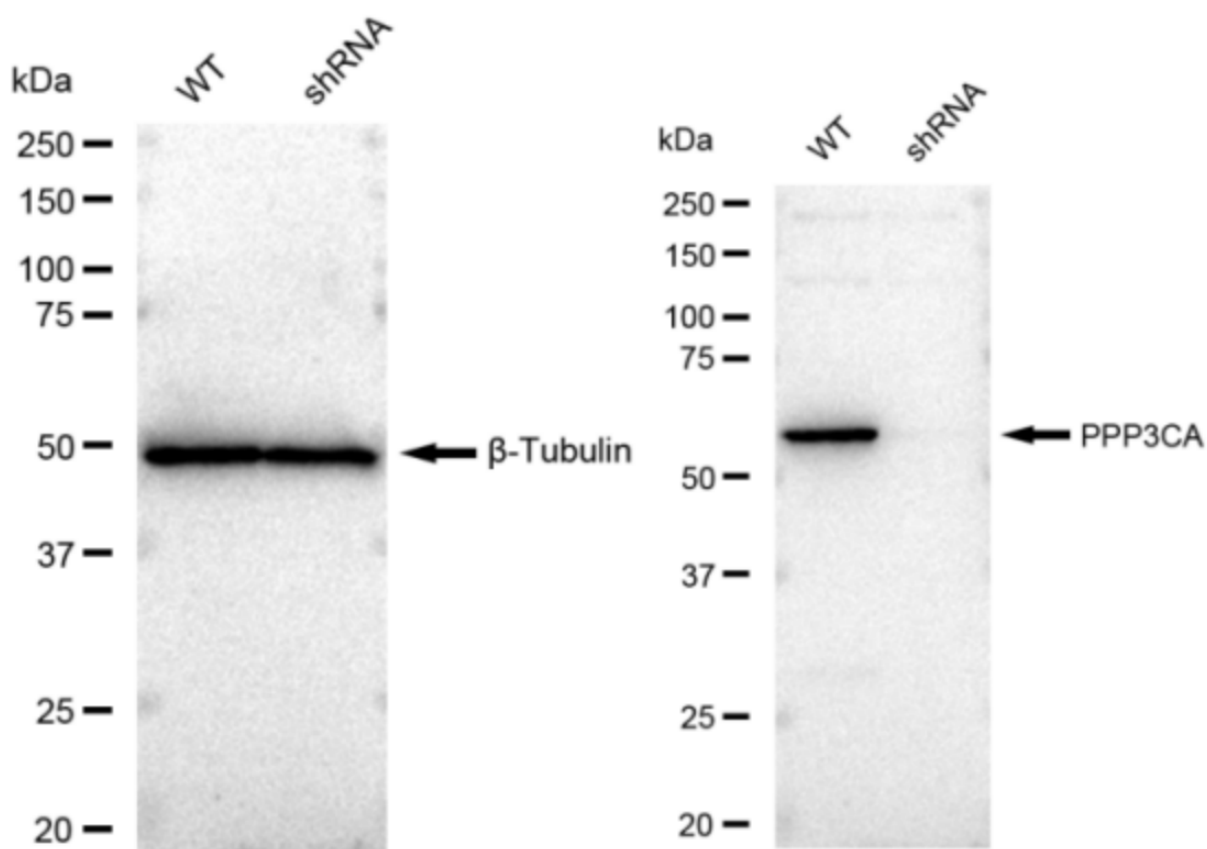
WWW.GENUINBIOTECH.COM

Human PPP3CA Knockdown Cell Line (WB-Validated)

PAGE 2



RT-qPCR analysis. HeLa cells were infected with PPP3CA-specific shRNA lentiviral particles, total RNA was extracted from wild-type and knockdown cells, RT-qPCR was performed using gene-specific primers. $\Delta Ct (Ct_{KD} - Ct_{WT})$ was used to calculate mRNA reduction (%) between wild-type and knockdown cells using the following formula: $(1 - 1/2^{\Delta Ct}) \times 100\%$.



Western blotting analysis. PPP3CA protein expression in wild-type (WT) and shRNA knockdown (KD) HeLa cells was detected using Western blotting. β -Tubulin served as a loading control. The blots were incubated with primary antibodies (Cat#61275, 1:5,000) against PPP3CA and β -Tubulin, respectively, followed by incubating with HRP-conjugated goat anti-rabbit secondary antibody (Cat#201, 1:20,000). Images were developed using FeQ™ ECL Substrate Kit (Cat#226).

SUPPORT

SUPPORT@GENUINBIOTECH.COM
TEL: +1-540-855-7041

ORDERS

SALES@GENUINBIOTECH.COM
FAX: +1-540-855-7041

WWW.GENUINBIOTECH.COM

