

Human MAP2K3 Knockdown Cell Line (WB-Validated)



Catalog #: C61297

Aliases

MAP2K3; Mitogen-Activated Protein Kinase Kinase 3; MEK3; MKK3; Stress-Activated Protein Kinase Kinase 2; MAP Kinase Kinase 3; MAPK/ERK Kinase 3; MAPKK3; SAPKK2; PRKMK3; Dual Specificity Mitogen-Activated Protein Kinase Kinase 3; SAPK Kinase 2; EC 2.7.12.2; SAPKK-2; MAPKK 3; MEK 3; Dual Specificity Mitogen Activated Protein Kinase Kinase 3; SKK2

Background

Gene Name: MAP2K3
NCBI Gene Entry: [5606](#)

Storage

Store at liquid nitrogen for 1 year.

Kit Components

1. Human MAP2K3 Knockdown Cell Line (Wb-Validated)
2. Wild-type cell line

Parental Cell Line

Human cell line supplied by the client

Validation Methods

RT-qPCR, Western blotting (WB)

Shipping

Shipped on Dry Ice.

Instructions For Use

This knockdown cell line should be paired with wild-type cell line for use.

Note: This product is for research use only.

Validation Data

SUPPORT

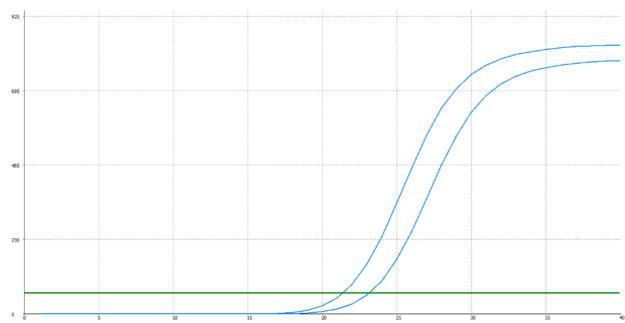
SUPPORT@GENUINBIOTECH.COM
TEL: +1-540-855-7041

ORDERS

SALES@GENUINBIOTECH.COM
FAX: +1-540-855-7041

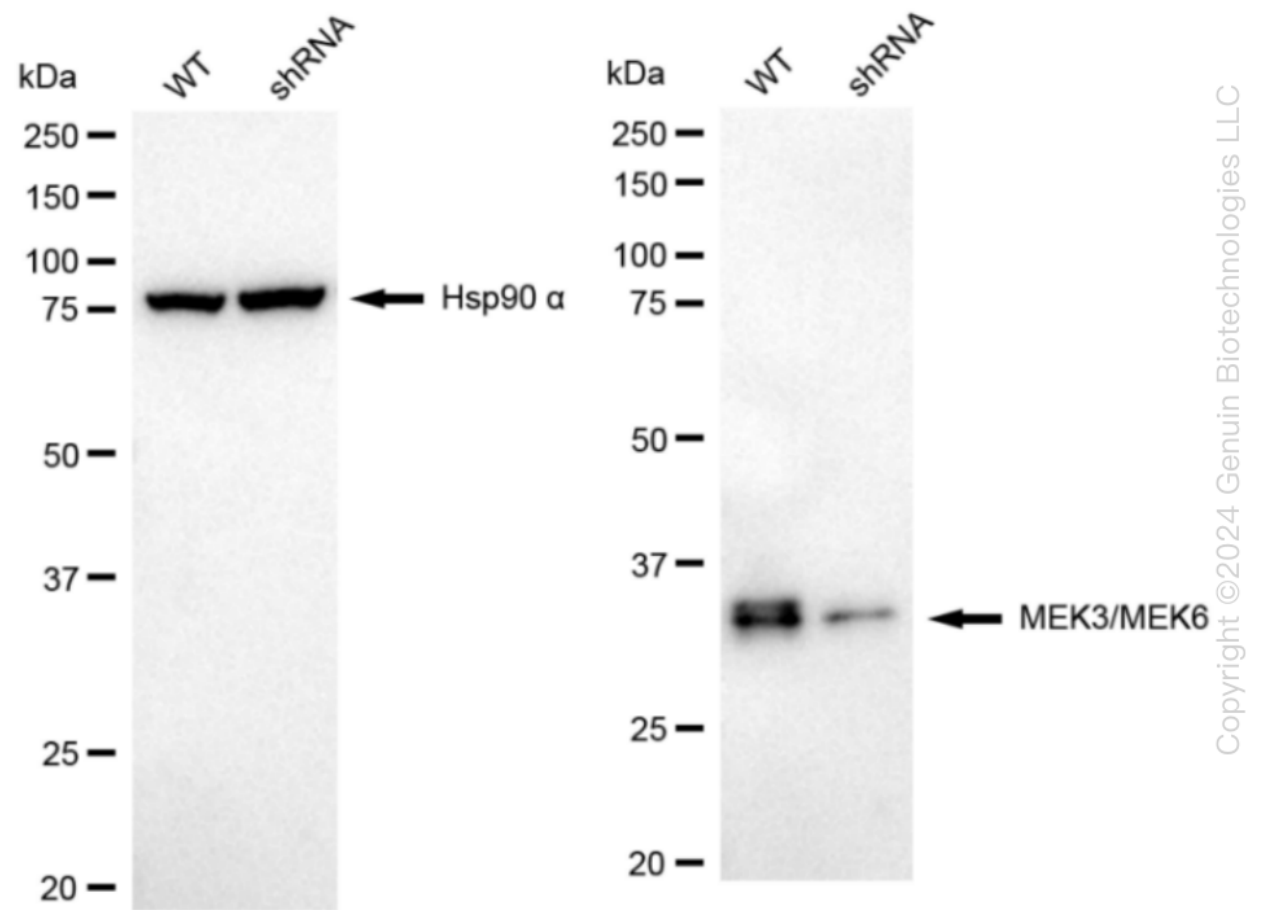
WWW.GENUINBIOTECH.COM

Human MAP2K3 Knockdown Cell Line (WB-Validated)



Genotype	Ct Value
Wild-Type	21.22
Knock-Down	22.93
$\Delta Ct (Ct_{KD}-Ct_{WT})$	1.71
% mRNA Reduction	↓ 69%

RT-qPCR analysis. HeLa cells were infected with MAP2K3-specific shRNA lentiviral particles, total RNA was extracted from wild-type and knockdown cells, RT-qPCR was performed using gene-specific primers. $\Delta Ct (Ct_{KD}-Ct_{WT})$ was used to calculate mRNA reduction (%) between wild-type and knockdown cells using the following formula: $(1-1/2^{\Delta Ct}) \times 100\%$.



Western blotting analysis. MAP2K3 protein expression in wild-type (WT) and shRNA knockdown (KD) HeLa cells was detected using Western blotting. Hsp90 α served as a loading control. The blots were incubated with primary antibodies (Cat#61297, 1:5,000) against MAP2K3 and Hsp90 α , respectively, followed by incubating with HRP-conjugated goat anti-rabbit secondary antibody (Cat#201, 1:20,000). Images were developed using FeQ™ ECL Substrate Kit (Cat#226).

SUPPORT

SUPPORT@GENUINBIOTECH.COM
TEL: +1-540-855-7041

ORDERS

SALES@GENUINBIOTECH.COM
FAX: +1-540-855-7041

WWW.GENUINBIOTECH.COM

SUPPORT

SUPPORT@GENUINBIOTECH.COM
TEL: +1-540-855-7041

ORDERS

SALES@GENUINBIOTECH.COM
FAX:+1-540-855-7041

WWW.GENUINBIOTECH.COM