

# Human PAK2 Knockdown Cell Line (WB-Validated)



**Catalog #: C61303**

## Aliases

PAK2; P21 (RAC1) Activated Kinase 2; PAK65; S6/H4 Kinase; P21 Protein (Cdc42/Rac)-Activated Kinase 2; Serine/Threonine-Protein Kinase PAK 2; P21 (CDKN1A)-Activated Kinase 2; P21-Activated Kinase 2; EC 2.7.11.1; Gamma-PAK; PAKgamma; PAK-2; P58; EC 2.7.11; PAKGAMMA; KNO2

## Background

Gene Name: PAK2

NCBI Gene Entry: [5062](#)

## Storage

Store at liquid nitrogen for 1 year.

## Kit Components

1. Human PAK2 Knockdown Cell Line (Wb-Validated)
2. Wild-type cell line

## Parental Cell Line

Human cell line supplied by the client

## Validation Methods

RT-qPCR, Western blotting (WB)

## Shipping

Shipped on Dry Ice.

## Instructions For Use

This knockdown cell line should be paired with wild-type cell line for use.

**Note:** This product is for research use only.

## Validation Data

---

### SUPPORT

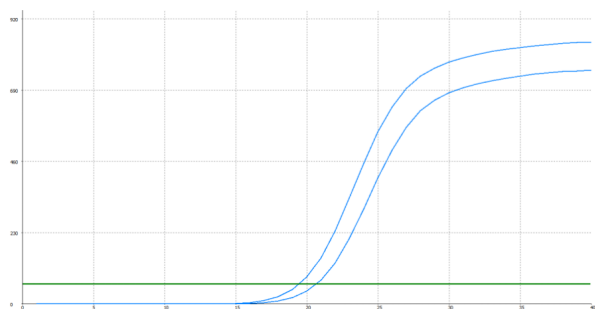
SUPPORT@GENUINBIOTECH.COM  
TEL: +1-540-855-7041

### ORDERS

SALES@GENUINBIOTECH.COM  
FAX: +1-540-855-7041

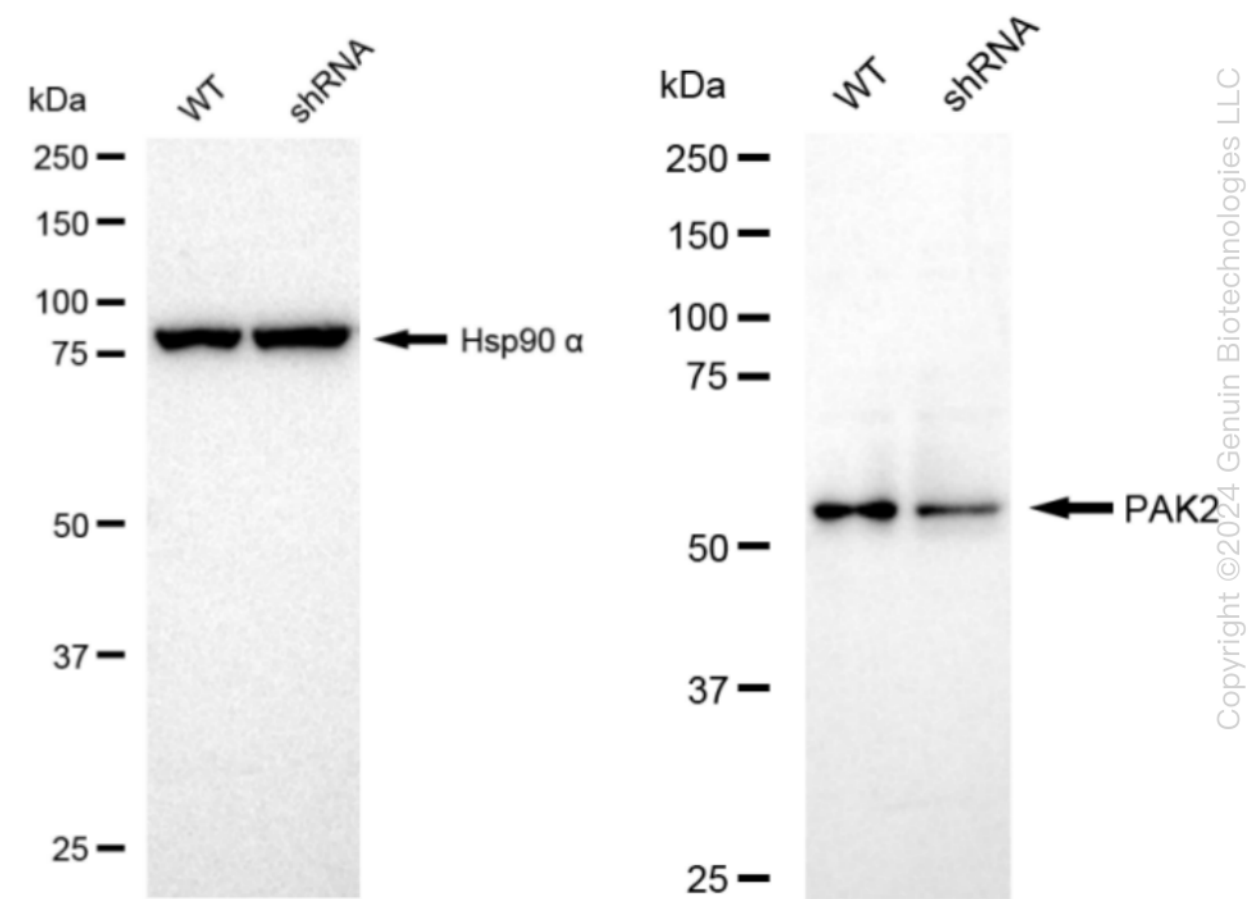
[WWW.GENUINBIOTECH.COM](http://WWW.GENUINBIOTECH.COM)

Human PAK2 Knockdown Cell Line (WB-Validated)



Genotype	Ct Value
Wild-Type	19.34
Knock-Down	20.34
$\Delta$ Ct (Ct <sub>KD</sub> -Ct <sub>WT</sub> )	1.00
% mRNA Reduction	↓ 50%

RT-qPCR analysis. HeLa cells were infected with PAK2-specific shRNA lentiviral particles, total RNA was extracted from wild-type and knockdown cells, RT-qPCR was performed using gene-specific primers.  $\Delta$ Ct (Ct<sub>KD</sub>-Ct<sub>WT</sub>) was used to calculate mRNA reduction (%) between wild-type and knockdown cells using the following formula:  $(1-1/2^{\Delta$ Ct) x 100%.



Western blotting analysis. PAK2 protein expression in wild-type (WT) and shRNA knockdown (KD) HeLa cells was detected using Western blotting. Hsp90  $\alpha$  served as a loading control. The blots were incubated with primary antibodies (Cat#61303, 1:5,000) against PAK2 and Hsp90  $\alpha$ , respectively, followed by incubating with HRP-conjugated goat anti-rabbit secondary antibody (Cat#201, 1:20,000). Images were developed using FeQ™ ECL Substrate Kit (Cat#226).

SUPPORT

SUPPORT@GENUINBIOTECH.COM  
TEL: +1-540-855-7041

ORDERS

SALES@GENUINBIOTECH.COM  
FAX: +1-540-855-7041

