

Human SMARCE1 Knockdown Cell Line (WB-Validated)



Catalog #: C61309

Aliases

SMARCE1; SWI/SNF Related, Matrix Associated, Actin Dependent Regulator Of Chromatin, Subfamily E, Member 1; BAF57; SWI/SNF-Related Matrix-Associated Actin-Dependent Regulator Of Chromatin Subfamily E Member 1; BRG1-Associated Factor 57; SWI/SNF-Related Matrix-Associated Actin-Dependent Regulator Of Chromatin E1; Chromatin Remodeling Complex BRG1-Associated Factor 57; CSS5

Background

Gene Name: SMARCE1

NCBI Gene Entry: [6605](#)

Storage

Store at liquid nitrogen for 1 year.

Kit Components

1. Human SMARCE1 Knockdown Cell Line (Wb-Validated)
2. Wild-type cell line

Parental Cell Line

Human cell line supplied by the client

Validation Methods

RT-qPCR, Western blotting (WB)

Shipping

Shipped on Dry Ice.

Instructions For Use

This knockdown cell line should be paired with wild-type cell line for use.

Note: This product is for research use only.

Validation Data

SUPPORT

SUPPORT@GENUINBIOTECH.COM
TEL: +1-540-855-7041

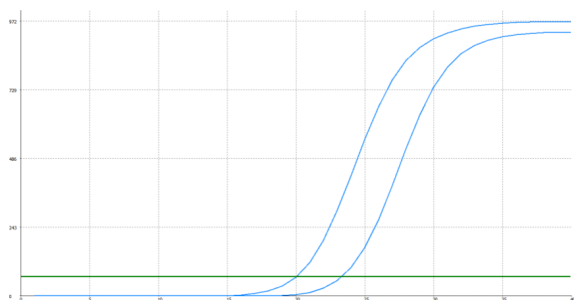
ORDERS

SALES@GENUINBIOTECH.COM
FAX: +1-540-855-7041

WWW.GENUINBIOTECH.COM

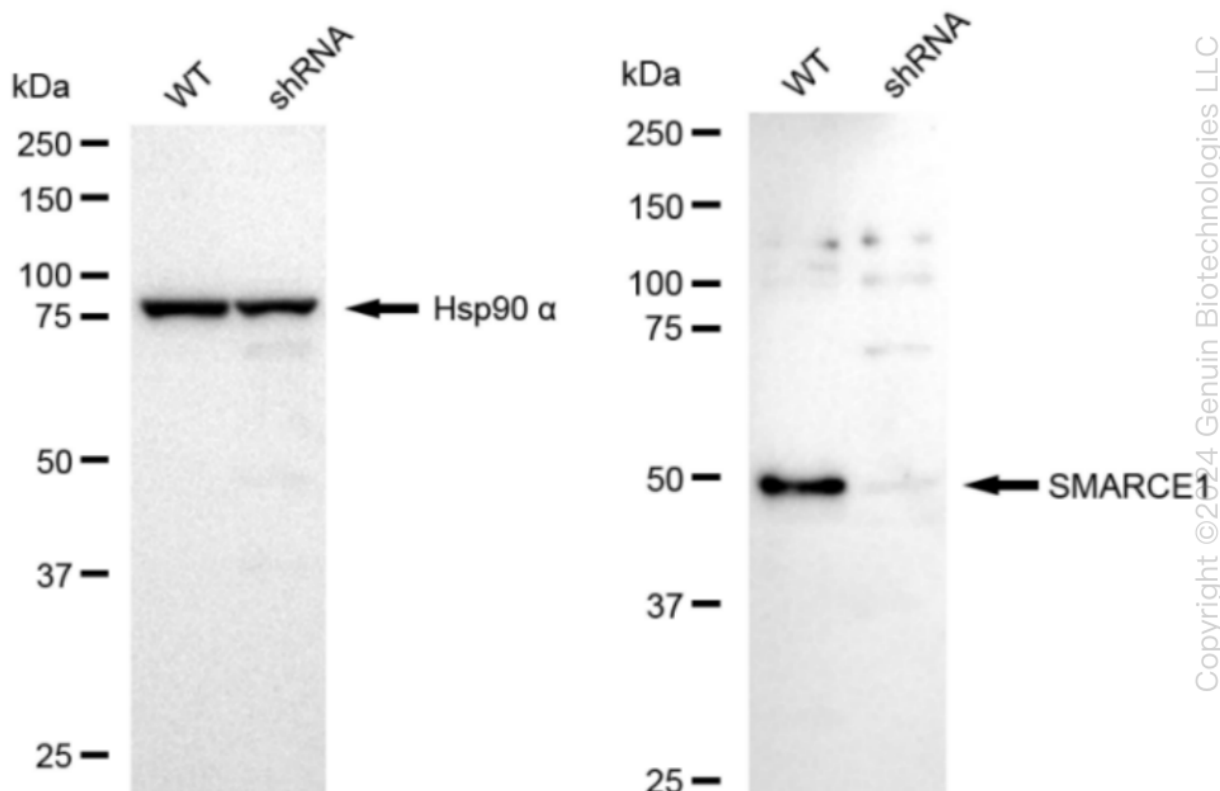
Human SMARCE1 Knockdown Cell Line (WB-Validated)

PAGE 2



Genotype	Ct Value
Wild-Type	20.05
Knock-Down	23.26
ΔCt (Ct _{KD} -Ct _{WT})	3.21
% mRNA Reduction	↓ 89%

RT-qPCR analysis. HeLa cells were infected with SMARCE1-specific shRNA lentiviral particles, total RNA was extracted from wild-type and knockdown cells, RT-qPCR was performed using gene-specific primers. ΔCt (Ct_{KD}-Ct_{WT}) was used to calculate mRNA reduction (%) between wild-type and knockdown cells using the following formula: $(1 - 1/2^{\Delta Ct}) \times 100\%$.



Western blotting analysis. SMARCE1 protein expression in wild-type (WT) and shRNA knockdown (KD) HeLa cells was detected using Western blotting. Hsp90 α served as a loading control. The blots were incubated with primary antibodies (Cat#61309, 1:5,000) against SMARCE1 and Hsp90 α , respectively, followed by incubating with HRP-conjugated goat anti-rabbit secondary antibody (Cat#201, 1:20,000). Images were developed using FeQ™ ECL Substrate Kit (Cat#226).

SUPPORT

SUPPORT@GENUINBIOTECH.COM
TEL: +1-540-855-7041

ORDERS

SALES@GENUINBIOTECH.COM
FAX: +1-540-855-7041

WWW.GENUINBIOTECH.COM

SUPPORT

SUPPORT@GENUINBIOTECH.COM
TEL: +1-540-855-7041

ORDERS

SALES@GENUINBIOTECH.COM
FAX:+1-540-855-7041

WWW.GENUINBIOTECH.COM