

Human NF2 Knockdown Cell Line (WB-Validated)



Catalog #: C61319

Aliases

NF2; NF2, Moesin-Ezrin-Radixin Like (MERLIN) Tumor Suppressor; SCH; Schwannomin; Merlin; BDNF; ACN; Neurofibromin 2 (Bilateral Acoustic Neuroma); Bilateral Acoustic Neurofibromatosis; Moesin-Ezrin-Radixin-Like Protein; Moesin-Ezrin-Radixin Like; Neurofibromin-2 ; Schwannomerlin; Merlin-1; Moesin-Ezrin-Radixin-Like Protein; Neurofibromin 2 (Merlin); MERLIN-1; MERLIN; SWNV

Background

Gene Name: NF2

NCBI Gene Entry: [4771](#)

Storage

Store at liquid nitrogen for 1 year.

Kit Components

1. Human NF2 Knockdown Cell Line (Wb-Validated)
2. Wild-type cell line

Parental Cell Line

Human cell line supplied by the client

Validation Methods

RT-qPCR, Western blotting (WB)

Shipping

Shipped on Dry Ice.

Instructions For Use

This knockdown cell line should be paired with wild-type cell line for use.

Note: This product is for research use only.

Validation Data

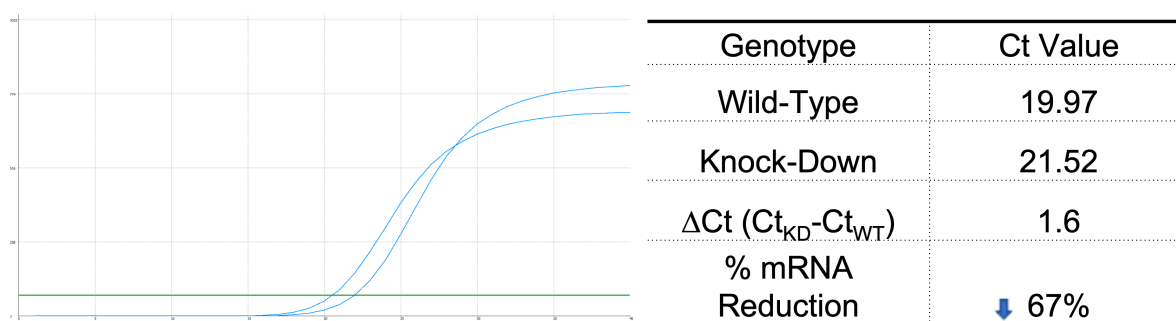
SUPPORT

SUPPORT@GENUINBIOTECH.COM
TEL: +1-540-855-7041

ORDERS

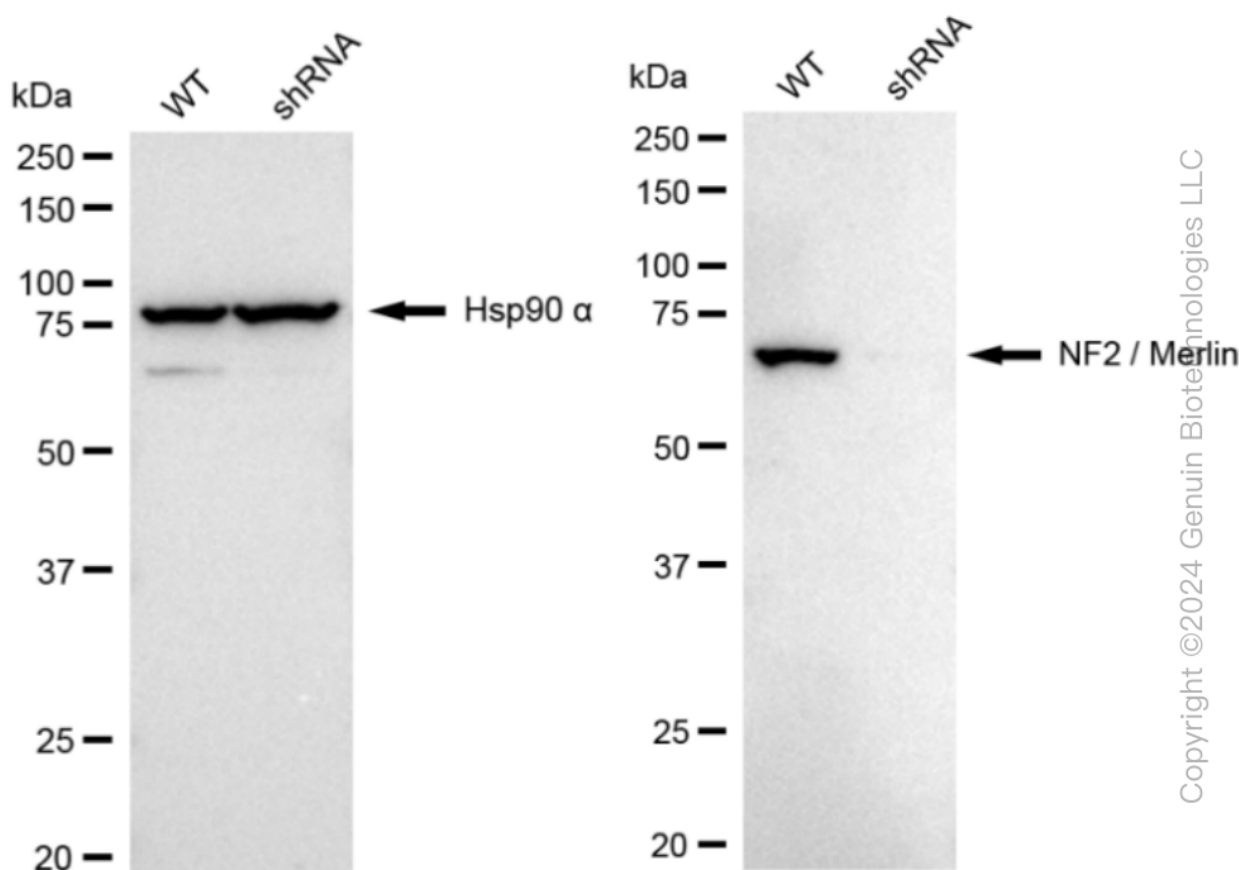
SALES@GENUINBIOTECH.COM
FAX: +1-540-855-7041

WWW.GENUINBIOTECH.COM



Copyright ©2025 Genuin Biotechnologies LLC

RT-qPCR analysis. HeLa cells were infected with NF2-specific shRNA lentiviral particles, total RNA was extracted from wild-type and knockdown cells, RT-qPCR was performed using gene-specific primers. $\Delta Ct (Ct_{KD} - Ct_{WT})$ was used to calculate mRNA reduction (%) between wild-type and knockdown cells using the following formula: $(1 - 1/2^{\Delta Ct}) \times 100\%$.



Copyright ©2024 Genuin Biotechnologies LLC

Western blotting analysis. NF2 protein expression in wild-type (WT) and shRNA knockdown (KD) HeLa cells was detected using Western blotting. Hsp90 α served as a loading control. The blots were incubated with primary antibodies against NF2 and Hsp90 α , respectively, followed by incubating with HRP-conjugated goat anti-rabbit secondary antibody. Images were developed using FeQ™ ECL Substrate Kit.