

# Human CHD4 Knockdown Cell Line (WB-Validated)



**Catalog #: C61324**

## Aliases

CHD4; Chromodomain Helicase DNA Binding Protein 4; Chromodomain-Helicase-DNA-Binding Protein 4; Mi-2 Autoantigen 218 KDa Protein; ATP-Dependent Helicase CHD4; Mi2-BETA; Mi-2b; CHD-4; EC 3.6.4.12; MI2-BETA; Mi2-Beta; EC 3.6.1; SIHIWES; MI-2B

## Background

Gene Name: CHD4  
NCBI Gene Entry: [1108](#)

## Storage

Store at liquid nitrogen for 1 year.

## Kit Components

1. Human CHD4 Knockdown Cell Line (Wb-Validated)
2. Wild-type cell line

## Parental Cell Line

Human cell line supplied by the client

## Validation Methods

RT-qPCR, Western blotting (WB)

## Shipping

Shipped on Dry Ice.

## Instructions For Use

This knockdown cell line should be paired with wild-type cell line for use.

**Note:** This product is for research use only.

## Validation Data

---

### SUPPORT

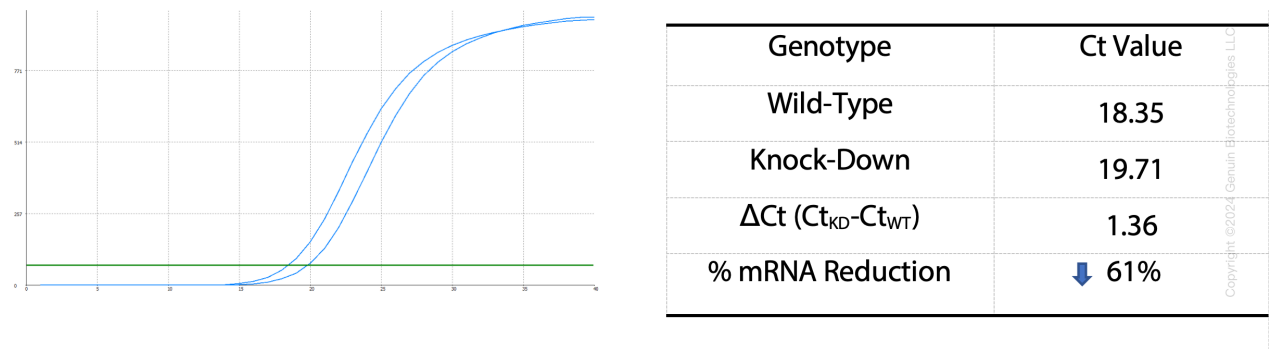
SUPPORT@GENUINBIOTECH.COM  
TEL: +1-540-855-7041

### ORDERS

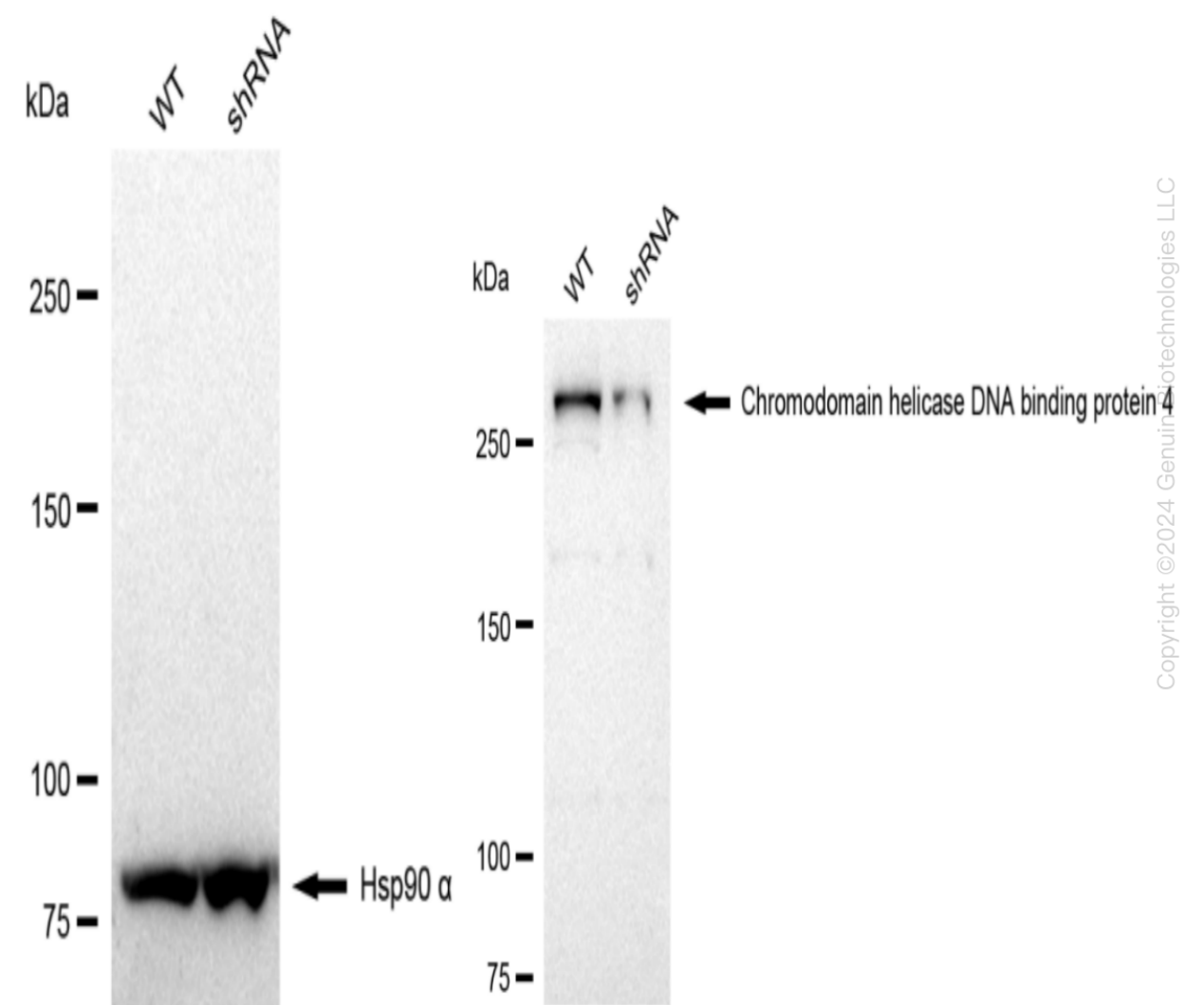
SALES@GENUINBIOTECH.COM  
FAX: +1-540-855-7041

[WWW.GENUINBIOTECH.COM](http://WWW.GENUINBIOTECH.COM)

Human CHD4 Knockdown Cell Line (WB-Validated)



RT-qPCR analysis. HeLa cells were infected with CHD4-specific shRNA lentiviral particles, total RNA was extracted from wild-type and knockdown cells, RT-qPCR was performed using gene-specific primers.  $\Delta Ct (Ct_{KD} - Ct_{WT})$  was used to calculate mRNA reduction (%) between wild-type and knockdown cells using the following formula:  $(1 - 1/2^{\Delta Ct}) \times 100\%$ .



SUPPORT

SUPPORT@GENUINBIOTECH.COM  
TEL: +1-540-855-7041

ORDERS

SALES@GENUINBIOTECH.COM  
FAX: +1-540-855-7041

WWW.GENUINBIOTECH.COM

## Human CHD4 Knockdown Cell Line (WB-Validated)

PAGE 3

Western blotting analysis. CHD4 protein expression in wild-type (WT) and shRNA knockdown (KD) HeLa cells was detected using Western blotting. Hsp90  $\alpha$  served as a loading control. The blots were incubated with primary antibodies (Cat#61324, 1:5,000) against CHD4 and Hsp90  $\alpha$ , respectively, followed by incubating with HRP-conjugated goat anti-rabbit secondary antibody (Cat#201, 1:20,000). Images were developed using FeQ™ ECL Substrate Kit (Cat#226).

---

### SUPPORT

SUPPORT@GENUINBIOTECH.COM  
TEL: +1-540-855-7041

### ORDERS

SALES@GENUINBIOTECH.COM  
FAX: +1-540-855-7041

[WWW.GENUINBIOTECH.COM](http://WWW.GENUINBIOTECH.COM)