

# Human CHMP2B Knockdown Cell Line (WB-Validated)



**Catalog #: C61326**

## Aliases

CHMP2B; Charged Multivesicular Body Protein 2B; CHMP2.5; VPS2B; Charged Multivesicular Body Protein 2b; Chromatin Modifying Protein 2B; DKFZP564O123; Vacuolar Protein-Sorting-Associated Protein 2-2; Vacuolar Protein Sorting-Associated Protein 2-2; VPS2 Homolog B (S. Cerevisiae); Chromatin-Modifying Protein 2b; VPS2 Homolog B; FTDALS7; HVps2-2; VPS2-2; CHMP2b; Vps2-2; ALS17; DMT1

## Background

Gene Name: CHMP2B

NCBI Gene Entry: [25978](#)

## Storage

Store at liquid nitrogen for 1 year.

## Kit Components

1. Human CHMP2B Knockdown Cell Line (Wb-Validated)
2. Wild-type cell line

## Parental Cell Line

Human cell line supplied by the client

## Validation Methods

RT-qPCR, Western blotting (WB)

## Shipping

Shipped on Dry Ice.

## Instructions For Use

This knockdown cell line should be paired with wild-type cell line for use.

**Note:** This product is for research use only.

## Validation Data

---

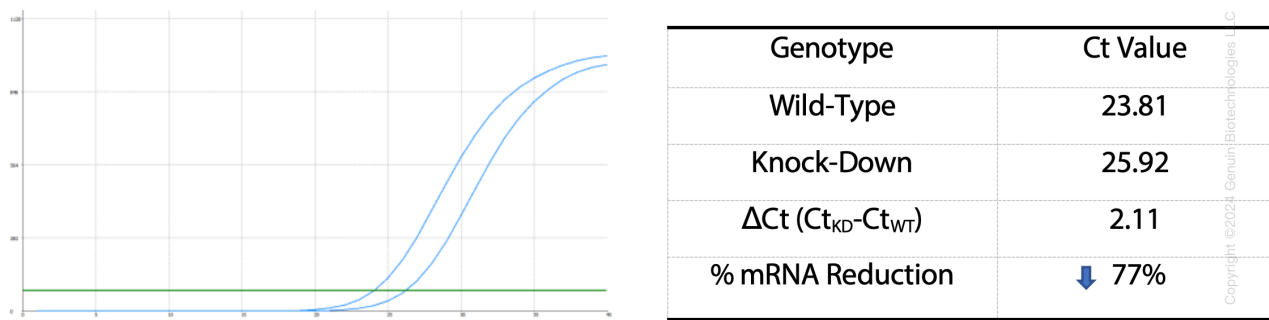
### SUPPORT

SUPPORT@GENUINBIOTECH.COM  
TEL: +1-540-855-7041

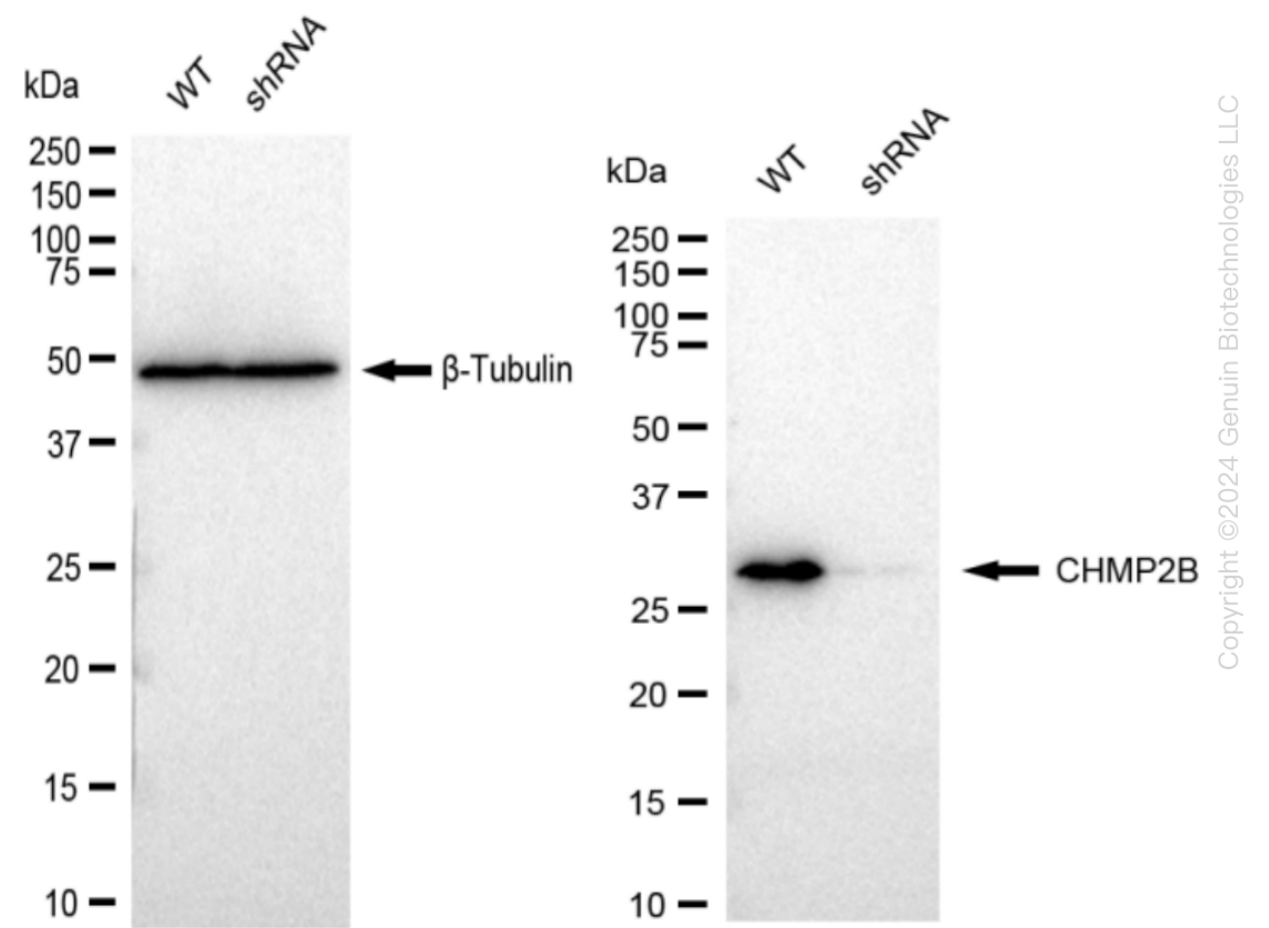
### ORDERS

SALES@GENUINBIOTECH.COM  
FAX: +1-540-855-7041

[WWW.GENUINBIOTECH.COM](http://WWW.GENUINBIOTECH.COM)



RT-qPCR analysis. HeLa cells were infected with CHMP2B-specific shRNA lentiviral particles, total RNA was extracted from wild-type and knockdown cells, RT-qPCR was performed using gene-specific primers.  $\Delta Ct (Ct_{KD}-Ct_{WT})$  was used to calculate mRNA reduction (%) between wild-type and knockdown cells using the following formula:  $(1-1/2^{\Delta Ct}) \times 100\%$ .



Western blotting analysis. CHMP2B protein expression in wild-type (WT) and shRNA knockdown (KD) HeLa cells was detected using Western blotting.  $\beta$ -Tubulin served as a loading control. The

## Human CHMP2B Knockdown Cell Line (WB-Validated)

PAGE 3

blots were incubated with primary antibodies (Cat#61326, 1:5,000) against CHMP2B and  $\beta$ -Tubulin, respectively, followed by incubating with HRP-conjugated goat anti-rabbit secondary antibody (Cat#201, 1:20,000). Images were developed using FeQ™ ECL Substrate Kit (Cat#226).

---

### SUPPORT

SUPPORT@GENUINBIOTECH.COM  
TEL: +1-540-855-7041

### ORDERS

SALES@GENUINBIOTECH.COM  
FAX: +1-540-855-7041

[WWW.GENUINBIOTECH.COM](http://WWW.GENUINBIOTECH.COM)