

Human CC2D1A Knockdown Cell Line (WB-Validated)



Catalog #: C61327

Aliases

CC2D1A; Coiled-Coil And C2 Domain Containing 1A; Five Prime Repressor Element Under Dual; Repression-Binding Protein 1; Akt Kinase-Interacting Protein 1; MRT3; TAPE; Coiled-Coil And C2 Domain-Containing Protein 1A; FRE Under Dual Repression-Binding Protein 1; Putative NF-Kappa-B-Activating Protein 023N; TBK1-Associated Protein In Endolysosomes(□2); Lethal (2) Giant Discs Homolog 2; FLJ20241; Freud-1; Aki-1; Lgd2; Five Repressor Element Under Dual Repression-Binding Protein 1; Mental Retardation, Nonsyndromic, Autosomal Recessive, 3; Putative NFkB Activating Protein; Freud-1/Aki1; LGD2; AKI1(□FREUD-1;AKI-1)

Background

Gene Name: CC2D1A

NCBI Gene Entry: [54862](#)

Storage

Store at liquid nitrogen for 1 year.

Kit Components

1. Human CC2D1A Knockdown Cell Line (Wb-Validated)
2. Wild-type cell line

Parental Cell Line

Human cell line supplied by the client

Validation Methods

RT-qPCR, Western blotting (WB)

Shipping

Shipped on Dry Ice.

Instructions For Use

This knockdown cell line should be paired with wild-type cell line for use.

Note: This product is for research use only.

Validation Data

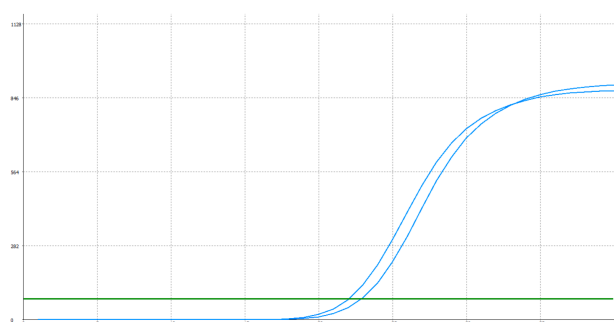
SUPPORT

SUPPORT@GENUINBIOTECH.COM
TEL: +1-540-855-7041

ORDERS

SALES@GENUINBIOTECH.COM
FAX: +1-540-855-7041

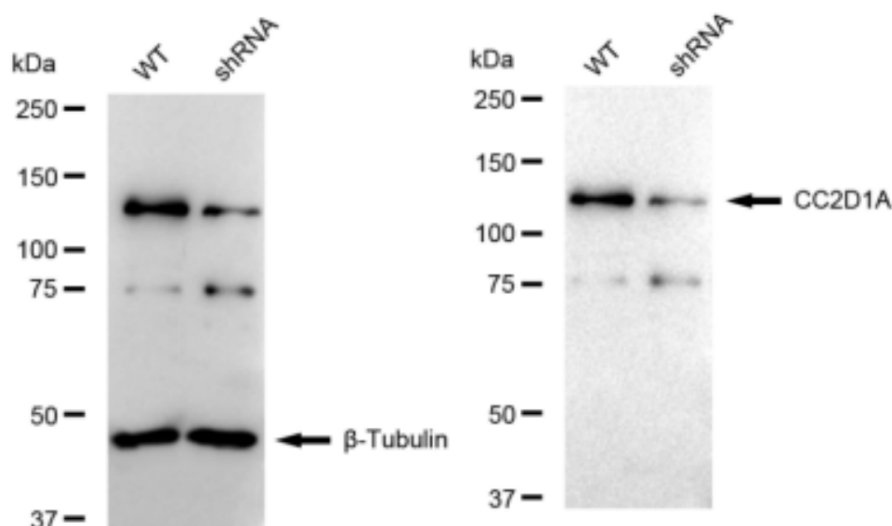
WWW.GENUINBIOTECH.COM



| Genotype | Ct Value |
|---------------------------------|----------|
| Wild-Type | 22.48 |
| Knock-Down | 21.58 |
| $\Delta Ct (Ct_{KD} - Ct_{WT})$ | 0.90 |
| % mRNA Reduction | ↓ 46% |

Copyright ©2025 Genuin Biotechnologies LLC

RT-qPCR analysis. HeLa cells were infected with CC2D1A-specific shRNA lentiviral particles, total RNA was extracted from wild-type and knockdown cells, RT-qPCR was performed using gene-specific primers. $\Delta Ct (Ct_{KD} - Ct_{WT})$ was used to calculate mRNA reduction (%) between wild-type and knockdown cells using the following formula: $(1 - 1/2^{\Delta Ct}) \times 100\%$.



Copyright ©2024 Genuin Biotechnologies LLC

Western blotting analysis. CC2D1A protein expression in wild-type (WT) and shRNA knockdown (KD) HeLa cells was detected using Western blotting. β -Tubulin served as a loading control. The blots were incubated with primary antibodies against CC2D1A and β -Tubulin, respectively, followed by incubating with HRP-conjugated goat anti-rabbit secondary antibody. Images were developed using FeQ™ ECL Substrate Kit.