

Human CIRBP Knockdown Cell Line (WB-Validated)



Catalog #: C61328

Aliases

CIRBP; Cold Inducible RNA Binding Protein; CIRP; Cold-Inducible RNA-Binding Protein; Glycine-Rich RNA Binding Protein; A18 HnRNP; Glycine-Rich RNA-Binding Protein CIRP; Cold Inducible RNA-Binding Protein; Testicular Tissue Protein Li 39; A18HNRNP

Background

Gene Name: CIRBP

NCBI Gene Entry: [1153](#)

Storage

Store at liquid nitrogen for 1 year.

Kit Components

1. Human CIRBP Knockdown Cell Line (Wb-Validated)
2. Wild-type cell line

Parental Cell Line

Human cell line supplied by the client

Validation Methods

RT-qPCR, Western blotting (WB)

Shipping

Shipped on Dry Ice.

Instructions For Use

This knockdown cell line should be paired with wild-type cell line for use.

Note: This product is for research use only.

Validation Data

SUPPORT

SUPPORT@GENUINBIOTECH.COM
TEL: +1-540-855-7041

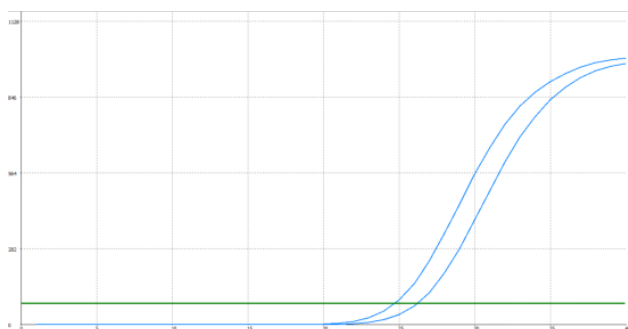
ORDERS

SALES@GENUINBIOTECH.COM
FAX: +1-540-855-7041

WWW.GENUINBIOTECH.COM

Human CIRBP Knockdown Cell Line (WB-Validated)

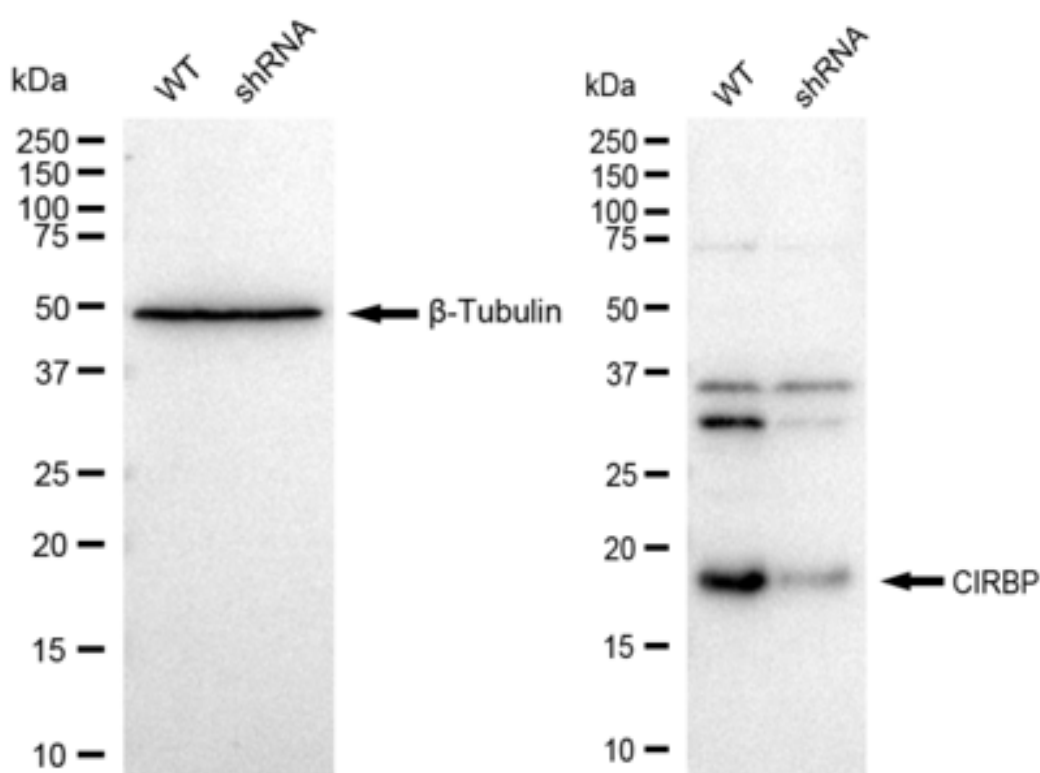
PAGE 2



Genotype	Ct Value
Wild-Type	24.48
Knock-Down	26.00
Δ Ct (CtKD-CtWT)	1.52
% mRNA Reduction	65%

Copyright © 2025 Genuin Biotechnologies LLC

RT-qPCR analysis. HeLa cells were infected with CIRBP-specific shRNA lentiviral particles, total RNA was extracted from wild-type and knockdown cells, RT-qPCR was performed using gene-specific primers. Δ Ct (CtKD-CtWT) was used to calculate mRNA reduction (%) between wild-type and knockdown cells using the following formula: $(1 - 1/2^{\Delta\text{Ct}}) \times 100\%$.



Copyright © 2025 Genuin Biotechnologies LLC

Western blotting analysis. CIRBP protein expression in wild-type (WT) and shRNA knockdown (KD) HeLa cells was detected using Western blotting. β -Tubulin served as a loading control. The blots were incubated with primary antibodies against CIRBP and β -Tubulin, respectively, followed

SUPPORT

SUPPORT@GENUINBIOTECH.COM
TEL: +1-540-855-7041

ORDERS

SALES@GENUINBIOTECH.COM
FAX: +1-540-855-7041

WWW.GENUINBIOTECH.COM

Human CIRBP Knockdown Cell Line (WB-Validated)

PAGE 3

by incubating with HRP-conjugated goat anti-rabbit secondary antibody. Images were developed using FeQ™ ECL Substrate Kit.

SUPPORT

SUPPORT@GENUINBIOTECH.COM
TEL: +1-540-855-7041

ORDERS

SALES@GENUINBIOTECH.COM
FAX:+1-540-855-7041

WWW.GENUINBIOTECH.COM