

# Human CAP1 Knockdown Cell Line (WB-Validated)



**Catalog #: C61336**

## Aliases

CAP1; Cyclase Associated Actin Cytoskeleton Regulatory Protein 1; CAP; Adenylate Cyclase Associated Protein 1; Adenylyl Cyclase-Associated Protein 1; CAP, Adenylate Cyclase-Associated Protein 1 (Yeast); Testis Secretory Sperm-Binding Protein Li 218p; CAP, Adenylate Cyclase-Associated Protein 1; CAP1-PEN; CAP 1

## Background

Gene Name: CAP1

NCBI Gene Entry: [10487](#)

## Storage

Store at liquid nitrogen for 1 year.

## Kit Components

1. Human CAP1 Knockdown Cell Line (Wb-Validated)
2. Wild-type cell line

## Parental Cell Line

Human cell line supplied by the client

## Validation Methods

RT-qPCR, Western blotting (WB)

## Shipping

Shipped on Dry Ice.

## Instructions For Use

This knockdown cell line should be paired with wild-type cell line for use.

**Note:** This product is for research use only.

## Validation Data

---

### SUPPORT

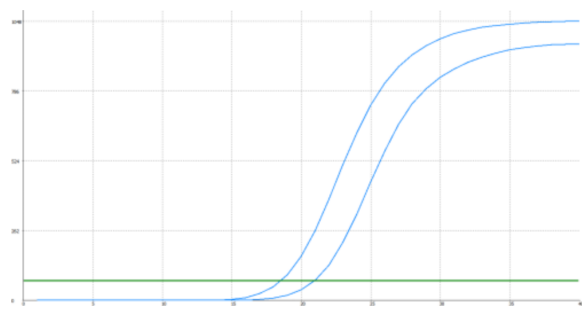
SUPPORT@GENUINBIOTECH.COM  
TEL: +1-540-855-7041

### ORDERS

SALES@GENUINBIOTECH.COM  
FAX: +1-540-855-7041

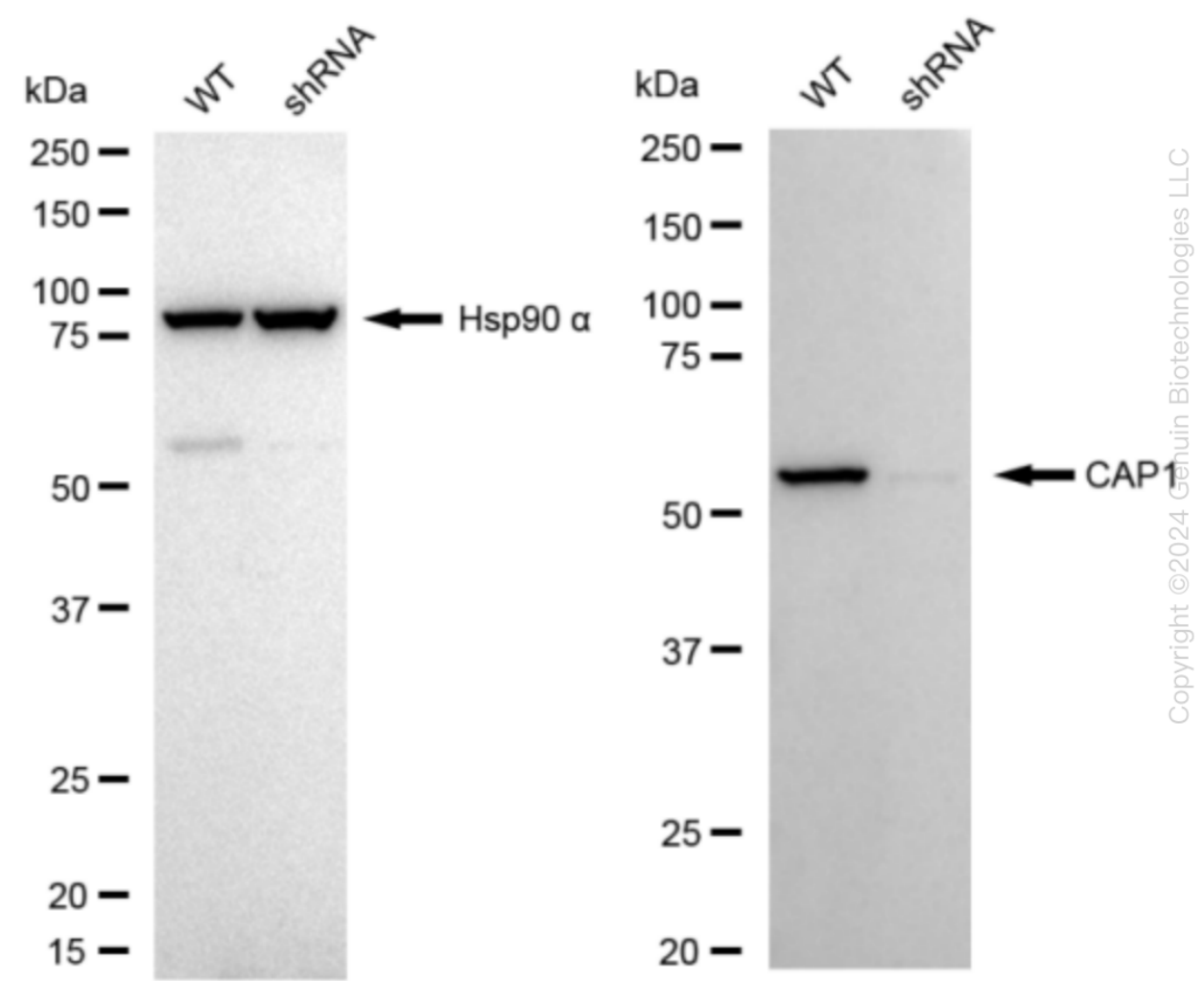
[WWW.GENUINBIOTECH.COM](http://WWW.GENUINBIOTECH.COM)

Human CAP1 Knockdown Cell Line (WB-Validated)



Genotype	Ct Value
Wild-Type	18.52
Knock-Down	20.81
$\Delta Ct (Ct_{KD}-Ct_{WT})$	2.29
% mRNA Reduction	↓ 80%

RT-qPCR analysis. HeLa cells were infected with CAP1-specific shRNA lentiviral particles, total RNA was extracted from wild-type and knockdown cells, RT-qPCR was performed using gene-specific primers.  $\Delta Ct (Ct_{KD}-Ct_{WT})$  was used to calculate mRNA reduction (%) between wild-type and knockdown cells using the following formula:  $(1-1/2^{\Delta Ct}) \times 100\%$ .



Western blotting analysis. CAP1 protein expression in wild-type (WT) and shRNA knockdown (KD) HeLa cells was detected using Western blotting. Hsp90  $\alpha$  served as a loading control. The blots were incubated with primary antibodies (Cat#61336, 1:5,000) against CAP1 and Hsp90  $\alpha$ ,

SUPPORT

SUPPORT@GENUINBIOTECH.COM  
TEL: +1-540-855-7041

ORDERS

SALES@GENUINBIOTECH.COM  
FAX: +1-540-855-7041

WWW.GENUINBIOTECH.COM

## **Human CAP1 Knockdown Cell Line (WB-Validated)**

PAGE 3

respectively, followed by incubating with HRP-conjugated goat anti-rabbit secondary antibody (Cat#201, 1:20,000). Images were developed using FeQ™ ECL Substrate Kit (Cat#226).

---

### **SUPPORT**

SUPPORT@GENUINBIOTECH.COM  
TEL: +1-540-855-7041

### **ORDERS**

SALES@GENUINBIOTECH.COM  
FAX: +1-540-855-7041

**WWW.GENUINBIOTECH.COM**